

CAWTHRA MULOCK, President

GORDON F. PERRY, General Manager

**NATIONAL IRON WORKS, Limited**

LARGEST MANUFACTURERS IN CANADA OF



ANY SIZE, FOR WATER, GAS, CULVERT OR SEWER  
LARGE STOCK FOR PROMPT DELIVERY

Lake or Rail Shipment Office, Works and Docks: **ASHBRIDGE'S BAY, TORONTO**  
PHONE MAIN 5038

**SHONE PNEUMATIC EJECTORS**

FOR RAISING SEWAGE AUTOMATICALLY

Over three hundred separate installations  
in satisfactory use throughout the world,  
in CITIES, DISTRICTS and BUILDINGS.  
Descriptive pamphlet upon application.

**SHONE COMPANY**

861 BLACKHAWK STREET

CHICAGO, ILL.

**R. D. WOOD & CO.**

PHILADELPHIA, PA., U.S.A.

Water and Gas Work Supplies,  
Cast Iron Pipe and Castings,  
Mathews Hydrants and Valves,

Suction Pressure

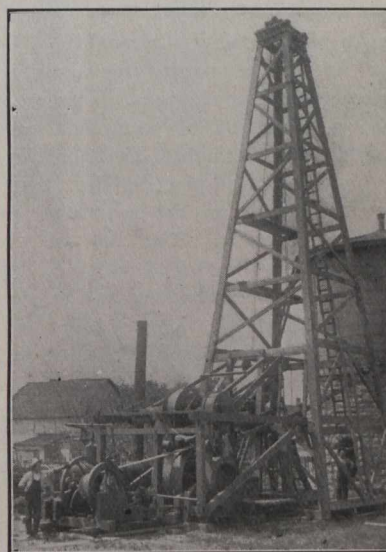
**GAS PRODUCERS**

Power Plants

**Wells Drilled**

For Water, Oil, Gas and Salt

Test holes drilled for Foundation purposes  
on water or land.

**THE WALLACE BELL CO., LIMITED**

78 Mitcheson St. - Montreal, Que.

Telephone, St. Louis 39

**T**HE CANADIAN ENGINEER  
is the recognized engineering  
authority in all parts of Canada.  
Edited by technically trained men—  
a complete weekly summary of  
engineering news is given in each  
issue—If you have a friend whom  
you think would like a specimen  
copy give us the name and address.  
We will do the rest.

**HYDRANTS**

Iron and Brass Founders

Iron Columns — Joist Hangers

Engine and Boiler Work a  
Specialty.

Estimates furnished on application.

**UNION IRON WORKS**  
CALGARY ALTA.



When writing to Advertisers mention The Canadian Engineer  
—you confer a favor on both Advertiser and Publisher.