

SOUTHERN MANITOBA.

Towns on the Pembina Mountain and Souris and Southwestern Branches of the C.P.R.

The growth of the different towns throughout Manitoba was not as great, excepting in a few instances, during 1900 as in some previous years. In the majority of the towns some dwelling houses were erected, which



Public School, Crystal City, Man.

would denote some increase in the population, but there are few additions to the number of businesses to report and in many places stores which were open for business when your representative made this trip last year are now closed. Business blocks have, of course, been erected at many points, some of them being very fine buildings, but in most instances these were rendered necessary on account of the old buildings occupied by the merchants having become unsuited to the requirements of the business either through lack of accommodation or for other reasons. The drought during the early part of the season, which at one time threatened to ruin the crop entirely, is, no doubt, largely responsible for the fall-

This work, besides making travel much easier, will serve to drain the land on either side, and it is expected that by this means some sections which have heretofore been good only for pasturage and hay lands will now be fit for cultivation. J. Hawksworth & Co. started a general store here during the last year, and R. Paterson, baker, is building a new stand in which he will open in fruit and confectionery in addition to his present business. The local paper, The Morris Herald, is now published by Liversidge & Bilyard. The crops around this part were very fair for this season.

At Rosenfeld the train for the south branches off, running to Gretna on the International boundary line, where connection is made with the Great Northern Railway. C. K. Stewart & Co. recently opened a general store at this point. Rosenfeld is near the Mennonite reserve and although not considered as a Mennonite town, still a large proportion of the business transacted is with these people.

Between Rosenfeld and the boundary are the two towns of Altona and Gretna, and on the Deloraine branch, west of Rosenfeld, are Plum Coulee and Winkler. These four towns are centres from which most of the business of the Mennonite reserve is handled. During the last four years a marked change has taken place in regard to the class of goods handled by the merchants at these points. The Mennonites are gradually giving up their old customs and habits of dress and living, and a growing demand is noticeable for goods such as are in use by English-speaking farmers. The villages in which these people at first congregated are now being broken up, each man moving to his own farm, thus saving much time formerly spent in going to and from work. Possibly one of the greatest changes affecting the business men is in regard to the



Principal Business Part of Deloraine, Man.

ing off in the building operations and doubtless also deterred some from starting new businesses. But another reason for the small increase in the business community this year is that there were already sufficient stores to handle the business and, as in many sections nearly all the best farms have been taken up and are held at a high valuation, settlers coming to this country have gone to the newer sections where the land is cheaper or where free homesteads are still to be had.

Mention has already been made of the conditions along the Morris-Brandon branch of the Northern Pacific railway, and in this letter we propose giving a review of the business outlook as seen from the towns along the Pembina, South Western and Souris sections of the Canadian Pacific railway.

Starting out by the Pembina or Deloraine branch, the first town reached is Morris, which is 42 miles south of Winnipeg. This town is still showing good progress. For a number of years its growth was retarded on account of the land in the surrounding district being held at high prices by speculators. Of late, however, this has been put on the market and a large number of settlers have come in. Many of these came from the United States and had considerable sums of money in their possession, which enabled them to commence farming on an extensive scale. During the last summer about thirty miles of graded roads were built by the municipality.

furnishing of their homes. At first the furniture, such as bedsteads, chairs, side-boards, etc., was all home-made, and the work was of no mean order, but furniture dealers now report a good demand for their goods. A school, known as the German Mennonite Normal school, for the training of teachers, has been maintained for a number of years at Gretna. This was incorporated last year under the name of the Mennonite Educational Institute. It is supported entirely by private funds, although recognized by the government, the principal being also inspector of all the schools on the reserve. There are about eighteen or twenty pupils in attendance this year.

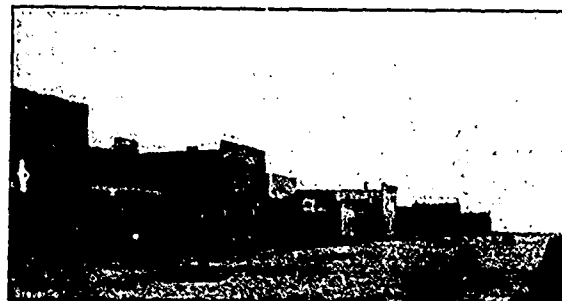
At Gretna a curling rink, large enough for two sheets of ice, was built this year, and the Canadian Pacific Railway built a two-stall round house replacing the one burned last summer. These together with a few dwelling houses constitute the building operations for the season.

In regard to population Morden ranks sixth amongst the towns and cities of Manitoba, though in the volume of business transacted it would probably stand nearer the top of the list than that. It is one of the oldest and best known towns in this country and besides being a good business point it is a pleasant place in which to live. In the summer time it is very pretty place, as it has been built in a grove of large shade trees and possesses a fine natural park, all of which together with its many handsome buildings, have made it a favorite resort for picnics and excursion parties

from Winnipeg. Morden is equipped with good telephone and electric light systems. The electric light plant was erected eight years ago and has been in use ever since. Four years ago it was overhauled and enlarged, giving power for 1,500 lights. There is some talk of the town acquiring the control of this plant. There are good schools, churches and a public hospital here. Six school teachers have been employed for a number of years and another class was formed at the commencement of this term. There has been considerable talk of establishing a normal school here, but as yet nothing definite has been done to-

last season have been larger than usual. The wheat yield for this district averaged last season about eight bushels to the acre. Very few changes are noticeable in the town since our last visit; the merchants doing business then are still to be found in the same stands attending to the wants of their customers. The premises of the Bank of Hamilton have been remodelled and enlarged, giving much better office accommodation.

La Riviere is prettily situated in the valley of the Pembina river. This town has been in existence for many years, but until it was made a Canadian Pacific Railway divisional point



Business Street, Napinka, Man.

wards this end. Until the last two or three years grain growing has received almost the undivided attention of the farmers in this section, but within that time more care has been given to the raising of stock. This year a great deal of money has been borrowed by the farmers from the banks and loan companies and on this account a fairly good cash business has been done by the merchants. In the business community several changes have taken place. C. F. Heckles has purchased the Morden roller mills, remodelling it and adding new machinery, giving it a capacity now of about 100 barrels per day. He has also installed machinery for chopping grain. The Morden woolen mills have been in operation for about five years. Application is now being made to the town of Morden for exemption from taxation for twenty years in consideration of which a mill will be built which will be kept running for at least nine months each year and will employ not less than twenty hands. E. N. Chambers, formerly of Killarney, has started a fruit and confectionery business under the name of Chambers & Co. Jas. Freeborn has opened out again in the grocery line. T. G. D. Graham has started a steam laundry. J. Kennedy & Co. have disposed of their hotel business to H. B. Brown and opened a liquor store. T. E. McGirr has taken over the general store business of Carley & Studer and the Hudson's Bay Co. has closed out their branch at this point.

Thornhill and Darlingford are both small villages, which, however, contribute their share to the amount of business from this line.

Manitou has earned a name for itself as a cattle shipping point but the shipments this year have fallen considerably below those of former years. Owing to the scarcity of feed

a few years ago it made but little progress. Now, however, a considerable number of railroad men make this their home, and La Riviere is becoming an important point.

At Pilot Mound is located the oatmeal mill of Dow & Curry, which has become well and favorably known among the trade on account of the superior article manufactured. This year great trouble is being experienced in getting oats as the oat crop last season was an entire failure from a miller's point of view. On this account old oats are in great demand, both for milling and for seed, and are bringing a high price. A few changes have taken place here this last year. N. P. McIntyre opened a butcher shop and D. B. Graham, hardware merchant, is building a brick block, 30x80 feet, which will be finished next spring. He will occupy the ground floor while the upper flat will be used as a public hall. Almost every town in Manitoba, has a rink of some kind. The one at this point has three sheets of ice, two for curling and one for skating. All the different branches of business are well represented here. There are four general stores, two hardware stores, confectionery and fruit stores, harness shops, drug stores, a private bank, newspaper, etc., showing that a large volume of business is transacted.

Crystal City is only four miles west of Pilot Mound, but notwithstanding the fact that these places are so close together they have both become important towns. Crystal City has, probably, shown more growth this last year than any other of the older towns of Manitoba. Among the new buildings erected is a solid brick block, 20x50 feet, by the Oddfellows. The ground floor is occupied by McClung's pharmacy, the upper flat being the lodge rooms. Adjoining this is a solid brick block built by the Hon. Thos. Green-



Business Street, Treherrow, Man.

this season a large number of young cattle have been sold to dealers from the United States, and driven across the line. It is estimated that about 500 head of stockers have been taken out in this way, which will reduce the shipments of beef cattle next year. On the other hand the shipments of hogs from this station during the

way and Sparling & Lander. The corner store, owned by Sparling & Lander, is occupied by themselves and Sharp, Mutch & Co., general merchants, are occupying the other stand. This latter is a new business here and is a continuation of that formerly carried on at Cypress River by A. Sharp & Co. Jas. Nichol has started