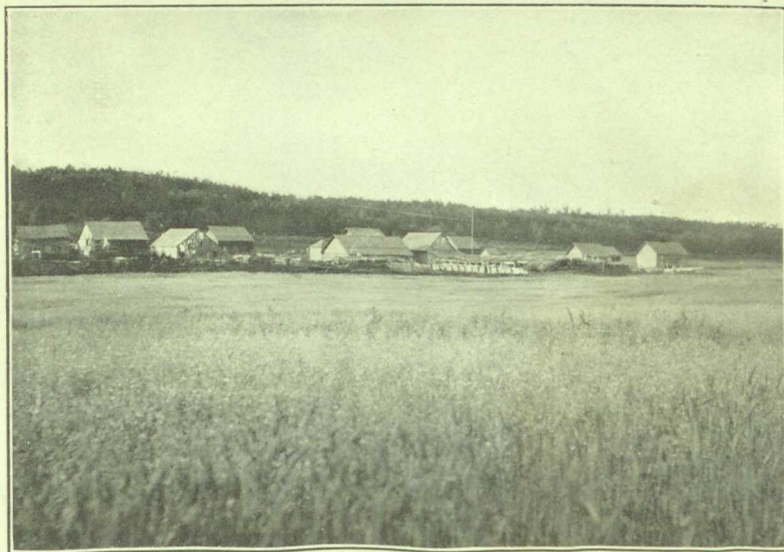


F. S. Lawrence's farm, Fort Vermilion, Peace River, $58^{\circ}3'$ north latitude, Alberta ;
700 miles by trail from Edmonton.
See pages 47, 74, 78, 101 to 107.



Sheridan Lawrence's farm, Fort Vermilion, Peace River, $58^{\circ}3'$ north latitude.
See pages 47, 74, 78, 101 to 107.
7139-11