

Make the Roof Fire-Proof

J-M Transite Asbestos Fire-proof Shingles offer the most perfect fire protection known, because they are made of Asbestos (rock) Fibre and Portland Cement—both minerals. Are absolutely proof against fire, water, acids, gases and chemical fumes, and are not in the least affected by the most severe weather conditions, except that the longer they are exposed the harder and tougher they become.

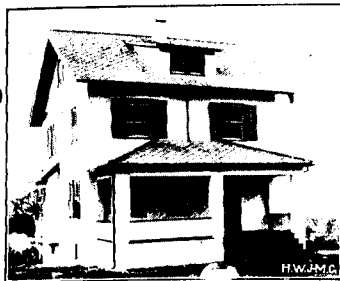
J-M Transite Asbestos Fire-Proof Shingles

are moulded under hydraulic pressure into a homogeneous mass. They never rot, decay, warp or split like wood shingles. Are tough and resilient, but not brittle, so do not break and fall off like wood or slate. Weighing only about half as much as slate, they save considerable in freight, are much more easily handled and there is no danger of breakage. These Shingles are also excellent non-conductors of heat and cold.

J-M Transite Asbestos Shingles are easily put on with ordinary woodworking tools. Come in many different sizes and shapes to meet all conditions and in colors of natural gray and Indian red.

Ask our Nearest Branch for Booklet.

The Canadian H. W. Johns-Manville Co., Limited
Toronto, Ont. Montreal, Que. Winnipeg, Man. Vancouver, B.C.
1366



Residence of Mr. Oswald Hessler, Bogota, N.J., covered with J-M Asbestos Shingles.

Geo. R. Prowse Range Co., Limited

22 McGill College Avenue
MONTREAL

—MANUFACTURERS OF—

Wrought Steel Ranges

for Hotels and Restaurants.
Hospitals, Colleges, Convents,
: : and Private Families. : :

COPPER KITCHEN UTENSILS

Ironing Stoves, Large Washing
Boilers, Hot Water and Steam
Carving Tables. Coffee, Tea and
Water Urns.

STEAM KETTLES
PORTABLE OVENS STOCK POTS

Laundry Dryers, Mangles, Refriger-
ators, Filters, Cooks' Knives, etc.

Gold Medal

World's Exposition, Brussels, 1910



VALVE DISCS

"Practically



Indestructible"

For long and satisfactory service, nothing
to equal them has ever been made.

MANUFACTURED SOLELY BY

The Gutta Percha & Rubber Mfg. Co.
of Toronto, Limited

Toronto, Montreal, Halifax, Winnipeg, Calgary, Vancouver

ARCHITECTS AND BUILDERS AND OTHERS

will find the Electric Vehicle
the car par excellence for
City and Suburban use. Let
our Experts tell you more
about them. :-: :-: :-:

The Toronto Electric Light Co.
Limited

The Electric Building

12 ADELAIDE STREET EAST