

MUNICIPAL ENGINEERS, CONTRACTORS AND MATERIALS

WILLIS CHIPMAN

Hon. Grad. McGill University.
 1. Can. Soc. C.E. M. Am. Soc. C.E.
 Mem. Am. W.W. Ass'n.

WATERWORKS, SEWERAGE WORKS, GAS WORKS, ELECTRIC LIGHT AND POWER PLANTS
 Reports, Surveys, Construction, Valuations
103 BAY STREET - TORONTO

RODERICK J. PARKE

Consulting Electrical Engineer

**MUNICIPAL ELECTRIC LIGHTING
 COMMERCIAL POWER INSTALLATIONS**

Latest Electric Lighting and Power Plants for
 Manufactories. Estimates, Specifications, Advice
 on Tenders, Valuating.
310 Temple Building - TORONTO, CANADA

W. T. ASHBRIDGE, C.E.

A. M. CAN. SOC. C.E.

609 Temple Building, - TORONTO

Special Attention given to

MUNICIPAL IMPROVEMENTS

*Sewerage Works, Water Supply,
 Pavements, Concrete Construction, Etc.*

J. EMILE VANIER

CIVIL AND HYDRAULIC ENGINEER

(Graduate of the Polytechnic School.)

IMPERIAL BUILDING, MONTREAL

SPECIALTIES:

Waterworks, Sewers, both Steam and Hydraulic
 Power Plants, Foundations, Paving, etc.
 Valuations made of Waterworks Systems, Arbi-
 trations, etc.
 Plans and Estimates for Public Buildings.

Please mention the **CONTRACT RECORD**
 when corresponding with advertisers.

ST. LAWRENCE FOUNDRY CO. ESTD 1852
 OF TORONTO, LIMITED.
ARCHITECTURAL-DOMESTIC WORK
FORGINGS & CASTINGS
 OF EVERY DESCRIPTION FOR BUILDERS, MACHINISTS & RAILWAYS. HEAVY CASTINGS A SPECIALTY.
PATTERNS & MODELS.
 Revised & Improved Tables Sent with Descriptive Estimates and Valuations on Separate Papers
262 to 268 FRONT ST. EAST. TORONTO.

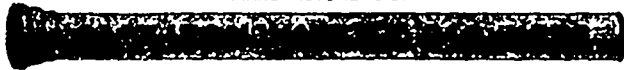
WATER CRANES
INDICATOR VALVE POST FOOT AND CHECK VALVES
INDICATOR AND GATE VALVES
PIPE CHAIN
2-3 & 4 WAY HYDRANTS

Montreal Pipe Foundry Co. Ltd.

SUCCESSORS TO

DRUMMOND, McCALL PIPE FOUNDRY CO. LTD.

MANUFACTURERS OF



OFFICES

CANADA LIFE BUILDING

MONTREAL

Cast Iron Water and Gas Pipes, etc.

Londonderry, Nova Scotia

- SPECIAL CASTINGS
- FLANGE PIPE
- BRANCHES
- HYDRANTS
- VALVES
- VALVE BOXES

LONDONDERRY PIPE FOUNDRY

Notice to Contractors

WE can save you money on.....
Granolithic or Crushed Stone

of any size, as we have the most complete plant in Canada. You will consult your own interests by getting our prices. We also make a specialty of Slate, Tile, Granite and all kinds of Stone. Crusher at Jarvis street wharf.

THE POWELL GRANITE & MARBLE CO'Y,
 Phone 3440. Office, 42a-44 Yonge St., Toronto

PORTLAND CEMENT

For Sidewalks, Pavements, Heavy Masonry and Concrete.

MANUFACTURED BY . . .

Write for Circular
 and Prices.

The Rathbun Company
 DESERONTO, ONT.

ALEX. GARTSHORE, President. J. G. ALLAN, Secretary and Treasurer. JAS. THOMSON, Vice-President and General Manager.

THE GARTSHORE-THOMSON PIPE & FOUNDRY CO. LIMITED.

Manufacturers of:::

Flexible and Flange Pipe,
 Special Castings and all kinds of
 Waterworks Supplies.



3 inches to 60 inches diameter.

For Water, Gas, Culvert and Sewer

HAMILTON ONT.