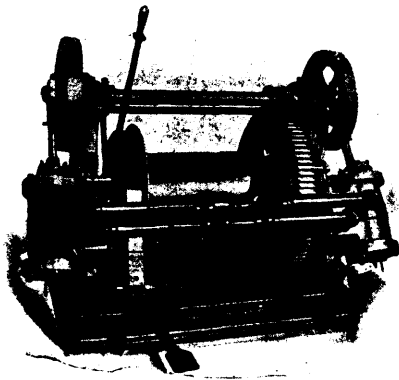
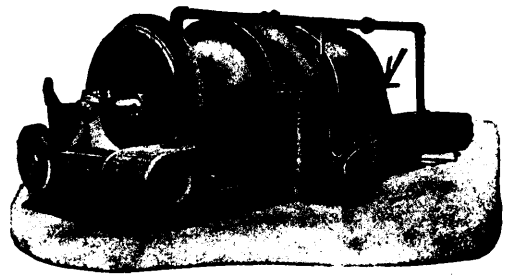


GENERAL MINING MACHINERY.



BACON'S Under-Ground Winze Hoist.

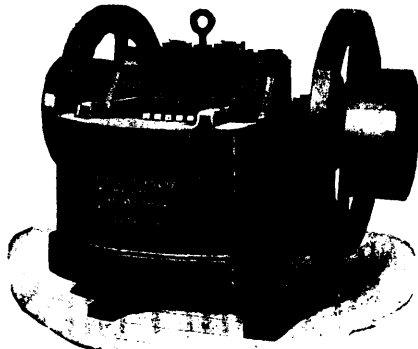
**HOISTING
CRUSHING
AND
Mining
Machinery.**



BACONS' Double Drum Winding Engines.

Earle C. Bacon, Engineer

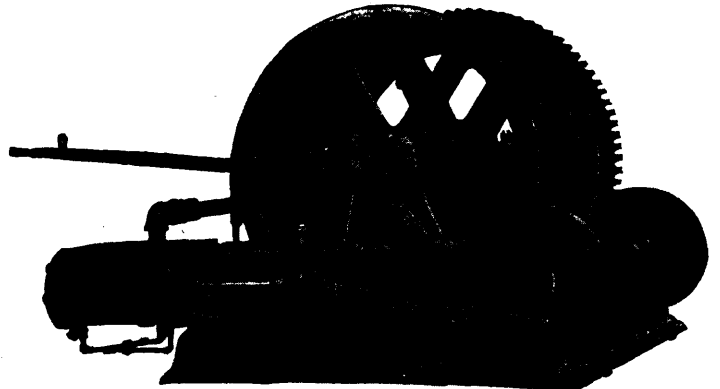
Havemeyer Building NEW YORK.



"Farrel" Ore and Rock Crusher. Standard of the World.

- Mine Cars.
- Engines.
- Boilers.
- Gravity Incline Machinery

Send for Completely Illustrated Catalogues.



BACON'S DOUBLE CYLINDER Single Drum Winding Engines for Mine Shafts, Slopes, etc.



Conveyor 328 feet centers, handling 4 tons "run of mine" coal per minute.

Link=Belt

**ELEVATORS
AND
CONVEYORS.**



Steel Coal or Ash Cars.

ANY MATERIAL.
ANY CAPACITY.

Electric Coal Mining and Haulage Machinery,
 Link-Belting, Sprocket Wheels, Malleable Iron Buckets,
 Shafting, Pulleys, Gearing, Clutches,
 Patent Machine-Moulded Rope Sheaves, etc.

THE LINK-BELT MACHINERY CO., Engineers, Founders, Machinists, Chicago, U.S.A.



WM. R. PERRIN & CO., CHICAGO, ILL., U.S.A.

MANUFACTURERS

Filter Presses

For Cyanide and Chloromatic Plants.

WRITE FOR CATALOGUE.

When writing to Advertisers kindly refer to the B.C. MINING RECORD.