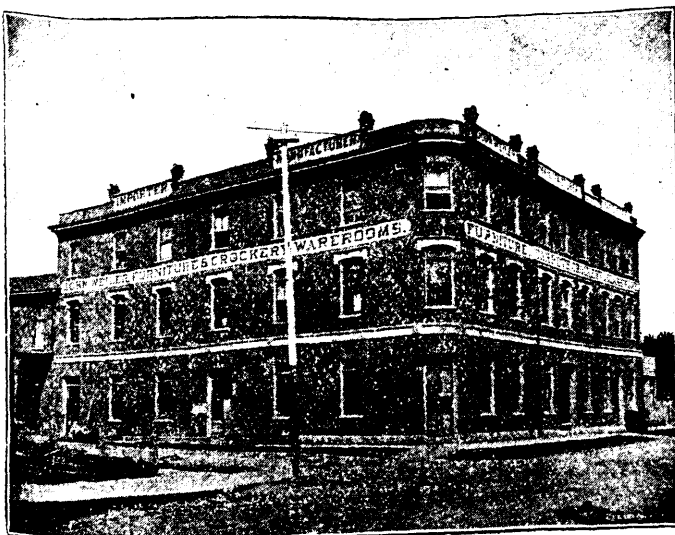


TABLE OF CONTENTS.

Editorial Notes	11	Asbestos at Kamloops	29
Notes from Rossland	14	The Cassiar Gold Region	29
A Record of the Year.		Happenings at the Mines.	
Rossland	16	Ashcroft	30
Trail	16	Boundary Creek	30
Nelson	17	Fort Steele	30
Kaslo	17	Golden	30
Sandon	17	Grand Forks	30
Revelstoke	17	Kaslo	30
Ashcroft	17	Keremeos	30
Kamloops	18	Midway	31
Fort Steele	18	Nanaimo	31
Greenwood City and Midway	18	New Denver	31
Vernon Mining News	18	Revelstoke	31
Interesting Notes from Kaslo	19	Rossland	31
Relation of Farming and Hydraulic Mining	21	Slocan	32
A Few Suggestions on Co-operative Mining	22	Vernon	32
The Yukon Trade	23	What is being Said of Us	32
Gold on Vancouver Island	23	Notes	32
The Truth	24	Kamloops Items	33
Texada Island	24	Stage Distances	33
Protection of Shareholders	24	Mining Stocks	33
Requires Attention	25	Agents	34
Metals more Precious than Gold	25	Mining Papers on File	34
A Suggestion by a Correspondent	25	Catalogues of Mining Machinery and Supplies	34
Railway and Steamboat News	25	Province of British Columbia	34
Coal Shipments, 1896	26	Provincial Government Agents	35
Electric Mining Machines	26	Mining Recorders	35
Mining Committee's Report—The British Colum- bia Board of Trade	27	Gold Commissioners	35
The Alberni Consolidated	28	Assayers in B.C.	35
The Press of British Columbia	28	Mining Centres	35
A Great Turbine Wheel	29		

SEE BUSINESS DIRECTORY NEXT PAGE.



WEILER BROS.' WAREROOMS.

ESTABLISHED 1862.

WEILER BROS.

VICTORIA, BRITISH COLUMBIA.

MANUFACTURERS OF

FURNITURE, UPHOLSTERY, ETC.

IMPORTERS OF

Crockery, Glassware, Wallpaper,
Carpets, Linoleums, Etc.

Special attention given to Bank and Office Fittings, and Hotel
and Bar Fixtures. Residences and Hotels
furnished throughout.

All orders, no matter how large, promptly filled, as we have
The Largest Stock in the Province.

WRITE US FOR CATALOGUE AND PRICE LIST.