

OATS! OATS!! OATS!!!

We have good facilities for disposing of Oats at the present time—any quantity. We furnish Government grade and weight. If you have Oats to sell write for market prospects and shipping instructions.

Thompson, Sons & Company

Grain Commission Merchants
Grain Exchange - - - Winnipeg, Manitoba



\$60

ROUND TRIP

ALL NORTH PACIFIC

COAST CITIES

On sale June 1st to September 15th

Limit October 31st, 1906

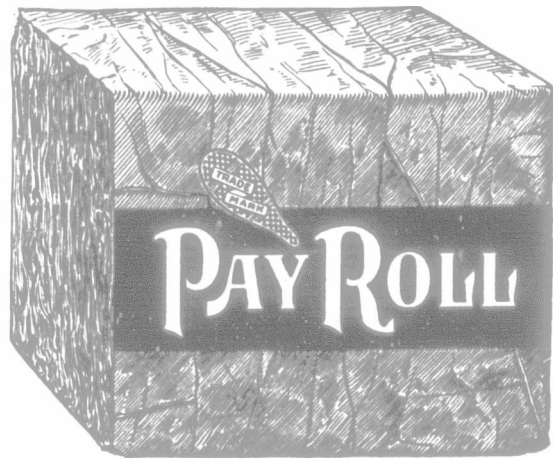
STOPOVERS

TOURIST RATES TO ALL SUMMER RESORTS
FROM June 1st

FAST FREIGHT LINE

Route all your freight care Northern Pacific
at St. Paul or Duluth.

H. SWINFORD, General Agent
R. CREELMAN, Ticket Agent
341 MAIN STREET, WINNIPEG



Bright Plug Chewing TOBACCO

10c. per Cut.

" FAVORITE " CHURN



In 8 sizes, churning from 1/2 to 30 gallons

Improved Steel Frame Patent Foot and Lever Drive
Patent Steel Roller Bearings

Easy to operate. Bolts throughout in place of wood screws. Superior in workmanship and finish. No other just as good. Accept no substitute. If not sold by your dealer write direct to us.

DAVID MAXWELL & SONS
St. Mary's, Ont.

ASSESSMENT SYSTEM



Incorporated by Special Act of the Dominion Parliament, 1893.

Enquire for further information to

C. C. HODGINS, Head Con. Com., Lucan, Ont.
W. C. FITZGERLAD, Head Clerk, London, Canada.
JOHN McMILLAN, Manager for Manitoba, 411 Main St., Winnipeg.

LOWEST RATES OF ASSESSMENT GIVEN BY ANY INCORPORATED BODY IN CANADA.
(For Men—Ordinary Class.)

| Age | \$500 | \$1000 | \$1500 | \$2000 | \$2500 | \$3000 |
|-----|-------|--------|--------|--------|--------|--------|
| 16 | 33 | 60 | 99 | 130 | | |
| 17 | 33 | 60 | 99 | 130 | | |
| 18 | 33 | 60 | 99 | 130 | | |
| 19 | 33 | 61 | 101 | 132 | 181 | 216 |
| 20 | 34 | 62 | 104 | 136 | 184 | 219 |
| 21 | 35 | 64 | 105 | 138 | 186 | 222 |
| 22 | 35 | 65 | 107 | 140 | 191 | 228 |
| 23 | 36 | 66 | 110 | 144 | 194 | 231 |
| 24 | 37 | 67 | 111 | 146 | 196 | 234 |
| 25 | 37 | 68 | 113 | 148 | 201 | 240 |
| 26 | 38 | 70 | 114 | 150 | 204 | 243 |
| 27 | 39 | 71 | 117 | 154 | 206 | 249 |
| 28 | 39 | 72 | 119 | 156 | 208 | 252 |
| 29 | 40 | 73 | 120 | 158 | 211 | 255 |
| 30 | 40 | 74 | 123 | 162 | 218 | 261 |
| 31 | 41 | 76 | 125 | 164 | 221 | 264 |
| 32 | 42 | 77 | 126 | 166 | 226 | 270 |
| 33 | 43 | 78 | 130 | 170 | 229 | 273 |
| 34 | 43 | 79 | 131 | 172 | 231 | 276 |
| 35 | 44 | 81 | 134 | 176 | 239 | 285 |
| 36 | 45 | 84 | 139 | 182 | 243 | 294 |
| 37 | 47 | 86 | 143 | 188 | 254 | 303 |
| 38 | 49 | 89 | 146 | 192 | 259 | 309 |
| 39 | 50 | 91 | 151 | 198 | 266 | 318 |
| 40 | 52 | 96 | 158 | 208 | 281 | 336 |
| 41 | 56 | 102 | 164 | 222 | 299 | 357 |
| 42 | 59 | 108 | 178 | 234 | 316 | 378 |
| 43 | 62 | 114 | 180 | 248 | 335 | 399 |
| 44 | 65 | 120 | 198 | 260 | 352 | 420 |
| 45 | 69 | 126 | 209 | 274 | 370 | 441 |
| 46 | 75 | 138 | 220 | 300 | | |
| 47 | 83 | 150 | 248 | 326 | | |
| 48 | 88 | 162 | 268 | 352 | | |
| 49 | 95 | 174 | 288 | 378 | | |
| 50 | 105 | 192 | 312 | 410 | | |
| 51 | 115 | 210 | | | | |
| 52 | 124 | 228 | | | | |
| 53 | 137 | 252 | | | | |
| 54 | 151 | 276 | | | | |
| 55 | 161 | 300 | | | | |

\$384,039.18
paid to widows and orphans to June, 1904.
Reserve - \$117,000,000

WE edit, compile and print
Live Stock Catalogues.
FARMER'S ADVOCATE, Limited,
14-16 Princess St. Winnipeg, Manitoba

WE BUY FURS SKUNK MINK COON
and all other kinds. Top market prices and quick cash returns. Trappers Guide Free to those who ship and mention this ad.
McMILLAN FUR & WOOL CO.
MINNEAPOLIS, MINN.
WRITE FOR CIRCULARS

TOWN OF NANTON

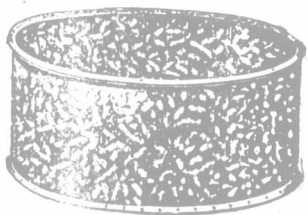
Southern Alberta on the Line of C. P. R.
Daily service. Fifty seven miles south of Calgary. If you want to buy Beautiful Town Site Lots, Choice Farming Lands, and get in on the ground floor in the very best section, write to us promptly, as the opportunities to get some of these choice lands are daily growing less. It will pay you to come and select for yourself. We will give you a square and honest deal, and place you on the road to success.

McPHAIL & McINTYRE.

Through Tourist Car Service to California.

Via Chicago, Great Western Railway. Cars leave Minneapolis and St. Paul on four days of the week—Monday, Tuesday, Wednesday, and Thursday. For full information apply to J. P. Elmer, G. P. A., St. Paul, Minn.

STEEL TANKS FOR ALL PURPOSES.



Corrugated and Plain.
Galvanized Steel Tanks.
Portable Grain Tanks.

RED RIVER METAL CO.
51 & 53 Aikins St. Winnipeg

THE NEW
NORTH-WESTERN LIMITED
ELECTRIC LIGHTED

THE MOST COMFORTABLE
Convenient, Unique and Beautiful
Trains ever placed in service between
Minneapolis, St. Paul and Chicago.

ONE OF THE MANY FEATURES
is the Longer Berths in Sleepers,
several inches longer than the usual
standard.

COMFORT EVERYWHERE

GEO. A. LEE, General Agent,
215 McDermott Ave. WINNIPEG Phone 1924

THE NORTH WESTERN LINE