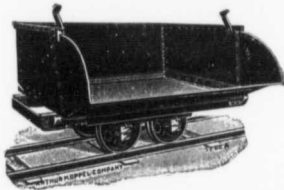


INDUSTRIAL RAILWAYS



Don't lose money on old-fashioned equipment

KOPPEL CARS and PORTABLE TRACK

Save money in transporting materials and finished products

Our Booklet D 31 will tell you how

ARTHUR KOPPEL COMPANY

146 Morris Building, NEW YORK, N.Y.

Large Stock in
New York, Koppel, Chicago, San Francisco, etc.

Amatite ROOFING



PAINTING a roof is work. Buying the paint is expense. Both are needless if your roof is Amatite.

When you finish laying Amatite, take away your ladder, pick up your hammer and knife, go away and leave the roof to take care of itself. A few years later you may go back and look at it if you care to, but it won't be necessary, and there won't be anything to do.

This is due to the fact that Amatite has a real mineral surface—a surface that is too

strong to need protection—too durable to require painting.

If you buy one of the smooth surface roofings you will have to paint it every two or three years to keep it from leaking. In fact, such roofs depend on the paint almost entirely for their waterproofing qualities.

Amatite on the other hand depends for its waterproofing upon double layers of Coal Tar Pitch,—the greatest known enemy to water.

Amatite comes in rolls of 110 square feet ready to lay. No special tools are required, and anyone can lay it properly.

A sample of Amatite will be forwarded free on request. Send for it and see how much better it is than the kind which requires painting to keep tight

THE PATERSON MANUFACTURING CO., Limited

TORONTO MONTREAL WINNIPEG ST. JOHN, N.B. HALIFAX, N.S.

DO you realize how difficult it often is for your salesman to get an interview with the heads of manufacturing firms—with the men who buy? This paper is an ever-welcome salesman. Why not get the benefit of its influence?

EXPORT TRADE KELLY'S DIRECTORY OF

Merchants, Manufacturers and Shippers of the World

Price, \$12.50 delivered

Annually by KELLY'S DIRECTORIES, Ltd., London, Eng.

The lists cover every country. With each country will be found classified lists of the Consuls, Banks, Manufacturers, Importers, Exporters, Merchants, Brokers, Shipping Agents, and other trades of importance to Exporters and Importers, together with a concise statistical account of its financial position, its ports and principal towns — with a short topographical account and the population of each. All trade headings are given in English, French, and the prevailing commercial language spoken in the country taken, so that the book can be readily used by people in any country. These features are not to be found in any other Directory, and are the means of making it readily understood in all countries.

It is the only Directory containing a fully representative Canadian and United States section that circulates abroad, and the frequent mention of the book in consular reports proves the extent to which it is consulted by purchasers in all parts of the world.

The publishers hold the British Royal Warrant, and the British Government Offices and the more important Consulates are supplied with a copy of the book.

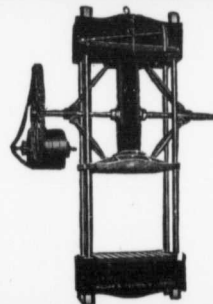
Kelly Publishing Company

Head Office, LONDON, W.C., England

and at New York, Paris, Hamburg, Melbourne, Sydney, Dunedin, Cape Town, Buenos Ayres, etc., etc.

Dominion Branch, 70 Dunn Ave., Toronto—W. P. Dent, Manager.

Hydraulic Presses
Power Screw Presses
Filter Presses



**William R. Perrin
AND
Company, Limited,
TORONTO, Canada.**