

## THE OLD MILL.

BY NED P. MAH.

Old servant of mankind! And hast thou found  
Rest from thy toil at last? Thou, who hast ground  
Its daily bread a generation round,  
And given it food,

Worn out with work well done, from thy decay  
What lesson may we learn? Or gain what stay  
For hope eternal? Or what use, to-day,  
For thee discern?

To do the right because it is the right,  
Unbending of reward, though death's dark night  
May veil no future glory from our sight,  
From thee we learn.

And though, by no analogy, thou tell  
Of hope beyond the grave, of heaven or hell  
We know whatever is ordained is well,  
For God is good.

## OUR CHESS COLUMN.

All communications intended for this Column should be addressed to the Chess Editor, CANADIAN ILLUSTRATED NEWS, Montreal.

J. W. S., Montreal, P. Q.—Letter, &c., to hand. Thanks.

J. R., Hamilton, Ont.—Postal to hand. Many thanks for your kind suggestion.

## MR. BODEN.

Nearly all our exchanges contain accounts of the late Mr. Boden, and they invariably agree in speaking of him in the highest terms. He was one, so it seems, of a large number of gentlemen who, whilst they shone in chess, had talents that they employed in other pursuits, in which they were equally calculated to excel. Buckle, Staunton, and Boden did not confine the power of their minds to the chequered board, but felt what Morphy once said, that there were more important things in life than playing chess.

It appears that Mr. Boden was a railway clerk in London when he first began to move in chess circles. In 1851 he carried off the provincial prize in the Tournament of that year. The death of a distant relative some years ago enabled him to devote his time to congenial studies, and landscape painting seems to have been one of his favourite pursuits. A considerable portion of his leisure time was given to chess, and, as we are informed by *Turf, Field and Farm*, "his chief enjoyment was to get into a quiet corner of Simpson's Divan, and talk chess and play chess for hours together." A contemporary of Staunton, Buckle, La Riviere and St. Amant, his memory was stored with much relating to the chess giants of the past, and this, we believe, he was willing to unfold for the benefit and delight of those with whom he associated.

He published, in 1851, an Introduction to Chess, was a contributor for some time to the *British Chess Review*, had charge of the Chess Column of the *Field* for more than ten years, and he was, we believe, the author of the excellent article, "Chess," in *Chambers' Cyclopaedia*.

As a player, Mr. Boden ranked very high. From a brief article by "Mars," which appeared some time ago in the *Dramatic Times*, we take the following notice of him, and we may add that the game which we publish to-day in our Column illustrates very strongly the views therein contained.

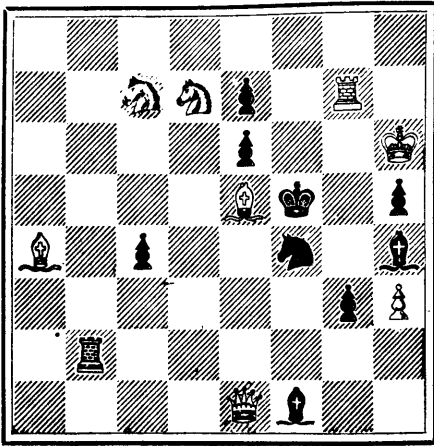
"I have called Mr. Boden the British champion at the time I refer to, although he never proved himself, nor claimed to be, the superior of Buckle. The most competent critics were about equally divided as to which of them deserved the palm. I remember Captain Evans saying, 'I give the palm to Boden; Buckle is splendid in the middle part of the game, and in the end, but Boden is equally excellent in all parts of it.' This, no doubt, was true; but, in justice to Buckle, I must assign to him a superiority over Boden as a match player—a player of hard games. He possessed an incapacity for mistakes, and an irresistible power of winning what are called won games, which belonged to no other player of that age except Morphy. Buckle's published games assert the correctness of this opinion. On the other hand, Boden's best games are deficient in this quality which so pre-eminently distinguished the other two champions. Thus, in his battles with Morphy, in two of the games at least he got the victory within his grasp and then let it slip away. He exhibited a similar weakness in his famous tourney game with Lowenthal at Birmingham."

In the number of the *Chess Player's Chronicle* for January 18th, at the end of a game which was played between Boden and Morphy, and which ended in a draw, we find the following remarks which we cannot refrain from inserting here. The game we hope to publish in our next column:

"Having never played this over before, we experienced a feeling of intense pleasure, as we found the game a very fine and interesting struggle between these masters. What particularly surprised us was the fact that the play presents grand and elaborate struggles for position to an extent we have hardly ever seen equalled, even in modern match play; at the same time it must be remembered this was but an off-hand game, and despite the fact that our modern masters claim to be originators of this style of play. We think all judges will agree that in profoundness the lamented deceased master proved himself in this game the better man. Morphy, however, surpassed his opponent in keenness of attack, as shown in the opening, and on his 24th and 36th move; also in the treatment of an open game. The masterly defence quite justified the high reputation S. S. Boden, during his life-time, enjoyed as one of the foremost English chess players."

We may add that Mr. Boden died at the comparatively early age of 55.

## PROBLEM No. 368.

By J. Pierce, M.A.  
BLACK.

WHITE.

White to play and mate in three moves.

## Solution of Problem No. 366.

White. Black.  
1. Q to K Kt sq 1. Any  
2. Mates acc.

## GAME 495TH.

(From Bird's Chess Masterpieces.)

Played between Messrs. Morphy and Boden,

(King's Bishop's Opening.)

White.—(Mr. Boden.)	Black.—(Mr. Morphy.)
1. P to K 4	1. P to K 4
2. B to Q B 4	2. Kt to K B 3
3. Kt to K B 3	3. Kt takes P
4. Kt to Q B 3	4. Kt takes Kt
5. Q P takes Kt	5. P to Q B 3
6. Kt takes K P	6. P to Q 4
7. Castles	7. K R to Q 3
8. K R to K sq	8. Q B to K 3
9. K B to Q 3	9. Kt to Q 3
10. P to K B 4	10. Kt takes Kt
11. P takes Kt	11. B to Q B 4 oh
12. K to R sq	12. Q to K R 5
13. Q B to K 3	13. B takes B
14. K R takes B	14. Castles K side
15. Q to K sq	15. Q to K R 3
16. Q to K Kt 3	16. Q R to K sq
17. Q R to K sq	17. P to Q B 4
18. B to K 2	18. B to Q 2
19. B to K B 3	19. Q to K 3
20. K R to Q 3	20. B to Q B 3
21. P to Q Kt 4 (a)	21. P to Q Kt 3
22. P to Q R 4	22. P to K B 3
23. P to Q Kt 5	23. B to Q Kt 2
24. P to Q B 4	24. P takes Q B P
25. K R to Q 6	25. Q to K 2
26. B takes B	26. Q takes B
27. P to K 6	27. Q to K B 2
28. Q R to Q sq	28. Q R to Q sq
29. K to Kt sq	29. R takes R
30. Q takes R	30. Q takes Q
31. R takes R	31. R to K sq
32. K to B 2	32. K to B sq
33. K to B 3	33. K to K 2
34. R to Q 7 (oh)	34. K takes P
35. R takes Q R P	35. R to K 2
36. R to Q R 6	36. R to Q Kt 2
37. P to Q R 5	37. K to Q 3
38. P takes P (b)	38. K to K 3
39. K to K 3	39. P to K Kt 4
40. P to K Kt 4	40. K to Q 3
41. K to K 4	41. K to R 3

Terminated in a draw.

## NOTES.

(a) All this is very critical and interesting; this move in particular is very clever (it has even been called artful). If Black play P to K B 3, then P to Q Kt 5 wins a piece.

(b) R takes P would have secured a well-deserved victory for Mr. Boden, whose play throughout could hardly be surpassed, even by his accomplished opponent.

## NOTICE.

OUR Mr. Nolan is about to start this week on a Western tour for the purpose of collecting subscriptions and canvassing for the CANADIAN ILLUSTRATED NEWS. We trust our friends and subscribers will give him every assistance, and facilitate his work as far as may lie in their power.

**80 SAMPLE CARDS** (No 2 like) handsome  
Style Chromo Cards, 10c. each, for 10c.  
new Scenes, Scenic Views, etc. 10c. each, for 10c.  
new, new imported designs, a beautiful series, 50c. each, for 50c.  
10c. 40 Transparencies 10c. each, for 10c.  
name in fancy type, 10c. each, for 10c.  
book of Sample. We give our Agents most elegant premiums or largest Commission ever offered. Gordon Frig. Co. Northford, Ct.

70 Choice Chromo Cards, or 50 elegant new Chromo name on, 10c. Crown Printing Co., Northford, Ct.

**THIS PAPER** MAY BE FOUND ON  
FILE AT GEO. F. ROWELL & CO'S  
Newspaper Advertising Bureau (10 SPRUCE STREET), WHERE ADVERTISING CONTRACTS may be made for it in  
**NEW YORK.**

## The Scientific Canadian

## MECHANICS' MAGAZINE

AND

PATENT OFFICE RECORD  
A MONTHLY JOURNAL

Devoted to the advancement and diffusion of  
Practical Science, and the Education of  
Mechanics.

THE ONLY SCIENTIFIC AND MECHANICAL PAPER  
PUBLISHED IN THE DOMINION.

PUBLISHED BY

THE BURLAND LITHOGRAPHIC CO.

OFFICES OF PUBLICATION,

5 and 7 Bleury Street, Montreal.

G. B. BURLAND General Manager.

## TERMS:

One copy, one year, including postage.....\$2.00  
One copy, six months, including postage.... 1.10  
Subscriptions to be paid in ADVANCE.

Cadbury's COCOA  
ESSENCE.

PURE, SOLUBLE, REFRESHING.

It is often asked, "Why does my doctor recommend Cadbury's Cocoa Essence?" The reason is that being absolutely genuine, and concentrated by the removal of the superfluous fat, it contains FOUR TIMES the AMOUNT OF NITROGENOUS or FLESH-FORMING CONSTITUENTS of the average of other Cocos which are mixed with sugar and starch. Beware of imitations, which are often pushed by shopkeepers for the extra profit.

## Montreal Post-Office Time-Table

JANUARY, 1882.

DELIVERY.		MAILS.	CLOSING.	
A. M.	P. M.		A. M.	P. M.
8 9 0	8 8 40	ONT. & WESTERN PROVINCES.	8 15	8 00
		(A) Ottawa by Railway	8 15	8 00
		(A) Province of Ontario, Manitoba & B. Columbia		
		Ottawa River Route up to Carillon		
		QUE. & EASTERN PROVINCES.		
		Quebec, Three Rivers, Berthier, Sorel, per steamer.		
		Quebec, Three Rivers, Berthier, &c., by Q. M. O. & O. Railway	1 50	8 00
		(B) Quebec by G. T. Ry.		
		(B) Eastern Townships, Three Rivers, Arthabaska & Riviere du Loup R. R.	8 00	
		Ottawa River Main Line to Ottawa	7 00	
		Do St. Jerome and St. Lin Branches	4 30	
		Do St. Jerome & St. Janvier	7 00	
		St. Remi, Hemmingford & Laprairie Railway	2 15	
		St. Hyacinthe, Sherbrooke, Coaticook, &c.	6 00	2 15
		Acton and Sorel Railway	8 00	
		St. John's, Stanbridge & St. Armand Station	7 00	
		St. John's, Vermont Junction & Shefford Railways	2 15	
		South Eastern Railway	4 45	
		(B) New Brunswick, Nova Scotia & P. E. I.	8 00	
		Newfoundland, forwarded daily on Halifax, whence despatch is by the Packet leaving Halifax on the 7th and 21st November	8 00	
		LOCAL MAILS.		
		Valleyfield, Valois & Dorval	9 45	
		Beauharnois Route	11 30	4 30
		Boucherville, Contrecoeur, Varennes & Vercheres	11 30	
		Cote St. Antoine and Notre Dame de Grace	9 00	1 45
		Hochelaga	9 00	1 00
		Huntingdon	11 30	2 15
		Lachine	10 00	2 00
		Laprairie	10 30	2 00
		Longueuil	10 30	2 15
		New Glasgow, St. Sophie, by Occidental Railway Branch	10 00	1 45
		Longue Pointe, Pointe-aux-Trem, & Charlemagne	10 00	4 30
		Point St. Charles	8 30	2 30
		St. Ceneogonde	11 30	1 15
		St. Lambert	10 00	
		St. Laurent, St. Martin & St. Eustache	1 30	2 15
		Tannerie West (St. Henri de M.)	11 30	7 00
		Sault-au-Recollet & Pont Viau (also Bougie)	10 00	6 00
		St. Jean Baptiste Village, Mile-End & Coteau St. Louis	10 00	6 55
		UNITED STATES.		
		Boston & New England States, except Maine	8 9 40	7 00
		New York and Southern States	8 8 40	5 40
		Island Pond, Portland & Maine	10 30	2 15
		(A) Western & Pacific States	8 8 40	5 40
		GREAT BRITAIN, &c.		
		By Canadian Line on Thursday		7 00
		By Canadian Line for Germany on Thursday		
		By Cunard on Monday		7 00
		Do. Supplementary, 13th and 27th December		5 25
		By Packet from New York for England, on Wednesday		2 15
		By Hamburg American Packet to Germany, Wednesday		2 15
		By White Star Line on 16th and 30th December		2 15
		(A) Postal Car Bags open till 8.45 a.m., and 9.15 p.m.		
		(B) Do 9.00 p.m.		
		Mails leave for Lake Superior and Bruce Mines, &c.		
		Mails for places on Lake Superior will leave Windsor on Mondays, Wednesdays and Fridays. Mails for Bruce Mines, Garden River, Little Current, &c., will leave Parry Sound on Tuesdays.		
		Mails leave New York by Steamer:		
		For Bahamas, 8th and 21st December.		
		Bermuda, 1st, 15th and 29th December.		
		Cuba, 10th December.		
		Cuba and Porto Rico, 3rd, 17th and 22nd December.		
		Cuba, Porto Rico & Mexico, 3rd, 15th & 24th Dec.		
		Cuba and Mexico, 8th and 29th December.		
		Curaçoa and Venezuela, 10th & 24th December.		
		Jamaica and West Indies.		
		Jamaica and the U.S. of Columbia (except Panama), 1st and 30th December.		
		For Hayti direct, 6th, 17th and 28th December.		
		Hayti, St. Domingo and Turks Island, 13th Dec.		
		Porto Rico, 10th December.		
		Santiago and Cienfuegos, Cuba, 6th December.		
		South Pacific and Central American Ports, 10th, 20th and 30th December.		
		Brazil and the Argentine Republic, 5th and 24th December.		
		Windward Islands, 10th and 26th December.		
		Grenada, Nicaragua, 16th December.		
		Mails leave San Francisco:		
		For Australia and Sandwich Islands, 17th December.		
		For China and Japan, 3rd and 21st December.		



## WELLAND CANAL.

## Notice to persons skilled in fitting up Electric Lights.

SEALED TENDERS addressed to the undersigned and endorsed "Tender for Electric Lights," will be received at this office until the arrival of the Eastern and Western Mails, on TUESDAY, the 21st day of FEBRUARY, next, for Lighting the Locks, &c., on the new part of the Welland Canal by means of Electric Lights.

A plan, showing the relative position of the proposed lights, can be seen at this Office and at the Office of the Resident Engineer Thorold, where a printed copy of general conditions and other information can be obtained, either on application personally or by letter.

Tenders must be made in accordance with the general conditions.

This Department does not, however, bind itself to accept the lowest or any tender.

By order,  
F. BRAUN,  
Secretary.

Dpt. of Railways and Canals,  
Ottawa, 31st January, 1882.

## Q. M. O. &amp; O. RAILWAY.

## Change of Time.

COMMENCING ON

Monday, Jan. 2nd, 1882.

Trains will run as follows:

	MIXED.	MAIL.	EXPRESS
Leave Hochelaga for Ottawa	8.20 p.m.	8.30 a.m.	5.00 p.m.
Arrive at Ottawa	7.55 a.m.	1.20 p.m.	9.50 p.m.
Leave Ottawa for Hochelaga	10.00 p.m.	8.10 a.m.	4.55 p.m.
Arrive at Hochelaga	9.45 a.m.	1.00 p.m.	9.45 p.m.
Leave Hochelaga for Quebec	6.40 p.m.	3.00 p.m.	10.00 p.m.
Arrive at Quebec	8.00 a.m.	9.50 p.m.	6.30 a.m.
Leave Quebec for Hochelaga	5.30 p.m.	10.10 a.m.	10.00 p.m.
Arrive at Hochelaga	7.30 a.m.	4.50 p.m.	6.30 a.m.
Leave Hochelaga for St. Jerome	6.00 p.m.		
Arrive at St. Jerome	7.45 p.m.		
Leave St. Jerome for Hochelaga	6.45 a.m.		
Arrive at Hochelaga	9.00 a.m.		
Leave Hochelaga for Joliette	5.15 p.m.		
Arrive at Joliette	7.40 p.m.		
Leave Joliette for Hochelaga	6.20 a.m.		
Arrive at Hochelaga	8.50 a.m.		
(Local trains between Hull and Aylmer.)			
Trains leave Mile-End Station ten minutes later than Hochelaga.			
Magnificent Palace Cars on all Day Passenger Trains, and Sleeping Cars on Night Trains.			
Trains to and from Ottawa connect with Trains to and from Quebec.			
Sunday Trains leave Montreal and Quebec at 4 p.m.			
All Trains Run by Montreal Time.			
GENERAL OFFICES—13 PLACE D'ARMES.			
TICKET OFFICES:			
13 Place D'Armes, 202 St. James Street, MONTREAL.			
Opposite ST. LOUIS HOTEL, Quebec.			
L. A. SENECA			
Gen'l Sup't.			

40 CARDS all Chromo, Glass and Motto, in Case name in gold & Jet 10c. West & Co., Westville, Ct.



## Private Medical Dispensary.

(Established 1860), 25 GOULD STREET, TORONTO, ONT. Dr. Andrews' Purification, Dr. Andrews' Female Pills, and all of Dr. A.'s celebrated remedies for private diseases, can be obtained at the Dispensary. Circulars Free. All letters answered promptly, without charge, when stamp is enclosed. Communications confidential. Address, R. J. Andrews, M. B., Toronto, Ont.

40 ALL Chromo Cards, Elegant New Imported designs, your name in fancy type, 10c., or 40 Fun and Flirtation Cards, 10c. AGENTS (Complete Sample-Book, 30c. J. B. HUSTED, Nassau, N.Y.)

British American  
BANK NOTE COMPANY.

MONTREAL.

Incorporated by Letters Patent.

Capital \$100,000.

## General Engravers &amp; Printers

Bank Notes, Bonds,  
Postage, Bill & Law Stamps,  
Revenue Stamps,  
Bills of Exchange,  
DRAFTS, DEPOSIT RECEIPTS,  
Promissory Notes, &c., &c.,  
Executed in the Best Style of Steel Plate Engraving.  
Portraits a Specialty.  
G. B. BURLAND,  
President & Manager.