

MUNICIPAL ENGINEERS, CONTRACTORS AND MATERIALS

DEBENTURES BOUGHT

Municipalities saved all possible trouble
by applying to

G. A. STIMSON & CO.

Investment Dealers

24 and 26 King St. W. - TORONTO

ARTIFICIAL STONE PAVEMENTS

SIDEWALKS A SPECIALTY

CORPORATIONS Will do well to consider our work
and prices before letting contracts

The Silica Baritic Stone Company
of Ontario, Limited.

WALTER MILLS,
General Manager

Head office:
INGERSOLL, ONT.

THE HERCULES CULVERT CO.

Manufacturers of

Portland Cement

Culvert Pipe

Culvert Arches

HOG-TROUGHS, CURBING, Etc., and
GENERAL CONTRACTING and SUPER-
VISION of all CEMENT AND CONCRETE
STRUCTURES. Guaranteeing permanence
and satisfaction. For Prices, Estimates and
Further Particulars write . . .

The Hercules Culvert Co. - HAMILTON

Paving Granite

Granite Sets for Street Paving. - CURBING cut
to any shape ordered. - Fine Rich Colors for
Building and Monumental Purposes.

Quarries, St. Philippe d'Argenteuil, P. Q.

Address all communications to

JOS. BRUNET - COTE DES NEIGES, MONTREAL

Please mention the

CONTRACT RECORD when

corresponding with advertisers.

WILLIS CHIPMAN

Hon. Grad. McGill University.
M. Can. Soc. C.E. M. Am. Soc. C.E.
Mem. Am. W.W. Ass'n.

**WATERWORKS, SEWERAGE WORKS, GAS
WORKS, ELECTRIC LIGHT AND
POWER PLANTS**

Reports, Surveys, Construction, Valuations

103 BAY STREET - TORONTO

RODERICK J. PARKE

Consulting Electrical Engineer

**MUNICIPAL ELECTRIC LIGHTING
COMMERCIAL POWER INSTALLATIONS**

Isolated Electric Lighting and Power Plants for
Manufacturers. Estimates, Specifications, Advice
on Tenders, Valuating.

310 Temple Building - TORONTO, CANADA

VAUGHAN M. ROBERTS

Civil and Sanitary Engineer

Waterworks, Sewers, Electric Light,
Electric Railways.

Plans and Specifi-
cations prepared. - Work
Superintended. . . . 28 Ontario Street,
ST. CATHARINES

W. T. ASHBRIDGE, C.E.

A. M. CAN. SOC. C.E.

609 Temple Building, - TORONTO

Special Attention given to

MUNICIPAL IMPROVEMENTS

Sewerage Works, Water Supp'y,
Pavements, Concrete Construction, Etc.

THE PHOENIX BRIDGE & IRON WORKS

Civil Engineers and Contractors

BLACKSMITHS AND MACHINISTS

STEEL AND IRON STRUCTURAL AND ARCHITECTURAL WORK

Beams, Channels, Angles and
Teas always in stock.

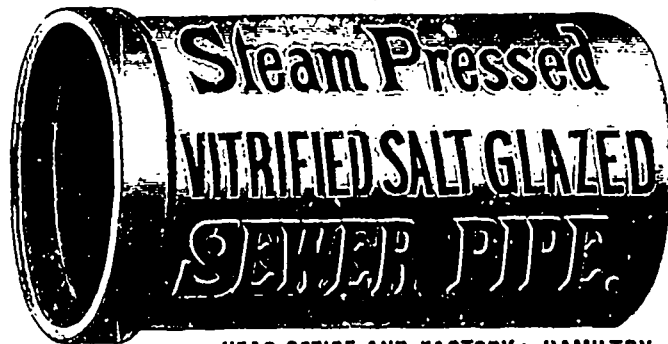
29 to 49 McGill Street,

P.O. Box 893.

MONTREAL

THE HAMILTON AND TORONTO SEWER PIPE CO.

(LIMITED.)



- FOR -
**SEWERS,
CULVERTS
AND
WATER PIPES.**

INVERTS
For Brick Sewers

Write for Discounts

HEAD OFFICE AND FACTORY: HAMILTON, CANADA

THE STANDARD DRAIN PIPE CO.

OF ST. JOHNS, P. Q., (LIMITED)



Manufacturers of
Salt-Glazed
Vitrified

**SEWER
PIPES**

Double Strength
Railway Cul-
vert Pipes,
Inverts, Vents,

AND ALL KINDS OF FIRE CLAY GOODS

For Artificial Stone Pavements, Roofing Gravel,
Concrete, Etc.

USE "CRUSHED QUARTZITE"

LAURENTIAN SAND & GRAVEL CO.

Telephone 2491.

MONTREAL

13 St. John Street.

Write for Prices delivered in your town.

THE CADWELL SILEX STONE CO'Y

SILEX STONE

WALKS
CURBINGS

} A SPECIALTY

NOTICE TO CORPORATIONS. - It will be to your
interest to get our prices before letting contracts

G. W. Cadwell, Manager, Windsor, Ont.

**CANADIAN
CONTRACTORS'
HAND-BOOK**

(SECOND EDITION)

Contains 150 pages of the most valuable
information, substantially bound in cloth.
Price, \$1.50; to subscribers of the "Can-
adian Architect and Builder," \$1.00.

The C. H. Mortimer Publishing Co.
of Toronto, Limited,

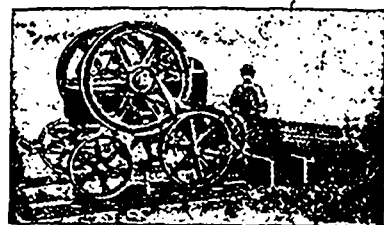
Confederation Life Building,
TORONTO.

Branch Office:

New York Life Building, Montreal.

THE JENCKES MACHINE CO.

31 Lansdowne Street - SHERBROOKE, QUE.



Builders of

STONE AND ORE CRUSHERS

and Macadamizing Machinery.

Complete Plants Planned and Erected.

Write us for Catalogue of Crushing Machinery,
and Prices, stating requirements.