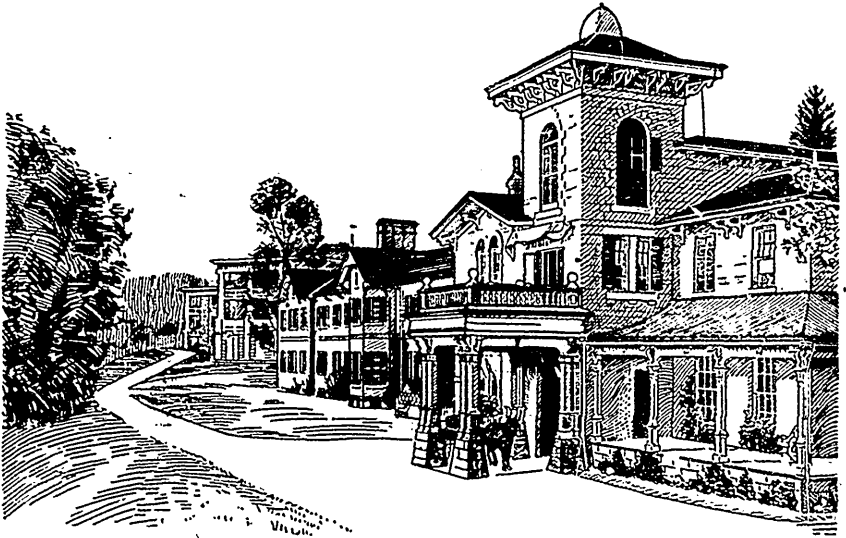


# The Homewood Sanitarium

## Guelph, Ontario



For Mental and Nervous Diseases.

Unequalled in Buildings and Equipment.

Conducted strictly on ethical principles.

Handsome new building, splendidly equipped, opened in 1907.

Most improved Hydrotherapeutic apparatus.

Special attention to mental cases requiring gynecological treatment.

A limited number of habit cases received in separate departments.

Beautiful, secluded, well-wooded grounds—essentially private.

Provision for recreation according to season.

Situated 48 miles west of Toronto on Grand Trunk and Canadian Pacific Railroads.

For particulars and booklet apply to

**DR. A. T. HOBBS,**

Medical Superintendent