

proficient in examining goods, and therefore a more confident buyer. He never, however, reaches a point where he cannot learn something. He is ever a good student, believing that goods well bought are half sold. -*American Grocer.*

**General Notes.**

The exports of petroleum thus far this year are 1,000,000 gallons ahead of the same time in 1884.

An Italian ship has been sheathed with glass plates, cast like iron plates, so as to fit the hull, to take the place of copper sheatings. The joints of the plates are made water-tight by the use of waterproof mastic. The advantages claimed for glass over copper are its insensibility to oxidation and its exemption from incrustation.

A stack has been recently completed for a lead-smelting works at Pueblo, Cal., which is 319 feet in height and 10 feet in diameter in the clear from the foundation up. It rests on 16 feet of smelter slag, which was poured in a liquid state in the ground 16 feet deep, and allowed to cool and solidify. On top of this, and above ground, is a second foundation, 16 feet high, made of brick. The stack proper, which is 287 feet high, is made of iron and lined with fire-brick. It is the largest stack west of the Missouri River, and when completed was painted red.

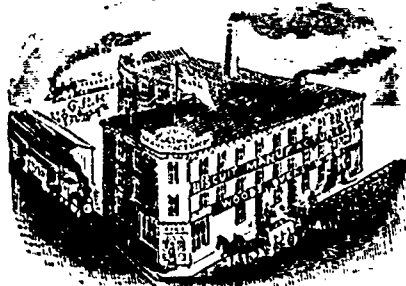
An idea of the magnitude of the cattle trade of the United States may be easily obtained by remembering that in 1874 there were exported \$40,000,000 of beef and beef products, and that this was not more than 6 per cent. of the total value of these products. In other words, the total value of beef and beef products was nearly \$700,000,000. and 94 per cent. of this was consumed at home. Yet, large as are these figures, it represents a yearly consumption—estimating the population at 55,000,000—of a little more than \$10 per capita per year.

Calcutta is the second largest tea-exporting city in the world, the leader being Foo-Chow. In 1884 Calcutta sent out 62,177,197 pounds of tea, while Foo-Chow exported 77,631,997 pounds. But while Foo-Chow shows a decrease for former years, Calcutta shows an increase.

The recent demand for English harness cabs in the United States had disclosed the significant fact that the wheels imported therewith are of American make. Buyers here have, therefore, actually paid the cost of freight to and from London and duty on their reimportation of these articles manufactured in their country.

Luminous paint continues to make slow but steady progress in its application to innumerable useful purposes. Among its most recent applications may be mentioned tapes for field use at night by the British Royal Engineers' department. Starting from a given point toward the front the men leave a trail of luminous tape on their track, and on reaching a given point they mark the contour of the earthworks to be executed by the same means, paying out the tape as they return toward the camp. The working party then follow the outward trail, execute the work, and return to camp without having discovered a single ray of light to the enemy.

ENCOURAGE HOME INDUSTRY. THOMAS G. F. KERR, Manufacturer of Choice Havana Cigars. All orders promptly filled. 301 Main Street, opposite Dundee Block Winnipeg.



**WOODS & CO.,**

Manufacturers of

**Biscuits, Confectionery, etc., etc.**

Factory and Office—Corner Higgins, Fonseca and Argue Streets,

WINNIPEG.

**F. Osenbrugge,**

Dealer in

**HIDES, SKINS, FURS, PELTS, TALLOW, & C**

Manufacturer of

**Fur and Skin Rugs, Robes, Mats,**

GARMENTS, Etc., Etc.

Furs and Skins Repaired, Cleaned Dressed and Renovated. A full line of Native Skins and Furs always on hand.

**HIGHEST MARKET PRICE**

**PAID FOR FURS, SKINS, HIDES, PELTS, & C**

WAREHOUSES AND OFFICES.

NOTRE DAME STREET EAST,

WINNIPEG.

**G. F. STEPHENS & CO.,**

Importers of and Wholesale Dealers in

**Paints, Oils, Glass**

VARNISHES, BRUSHES, PLASTER.

**GOLDEN STAR MACHINE OILS.**

NORTHWESTERN AGENTS FOR

Benny, Macpherson & Co., Importers of Shell and Heavy Hardware, Montreal.

Peck, Benny & Co., Manufacturers Cut Horse and Clinch Nails, Railroad Spikes, Horse Shoes, Tacks, Brads, etc., Montreal

Alex. McArthur & Co., Manufacturers Tarred Paper, Montreal.

Colin McArthur & Co., Dammon Wall Paper Works, Montreal

Jas. W. Tester & Co., Manufacturing Confectionery, Montreal.

**35 Portage Avenue,**  
WINNIPEG, MANITOBA.

**N. BAWLF,**

WHOLESALE DEALER IN

**Grain, Flour and Feed**

Special attention given to

**GRAIN EXPORTS.**

Cor. Princess & James St. West, WINNIPEG

**A. Ramsay & Son.**  
**OIL AND COLOR**  
**MERCHANTS.**

Plate Glass! Colored Glass!!  
Enamelled Glass, etc.

**5 McDERMOTT STREET,**  
**WINNIPEG.**

FEAR & PELLATT. HENRY MILL PELLATT.

**Pellatt & Pellatt,**

STOCK BROKERS,

**46 KING ST. EAST, TORONTO.**

Members Toronto Stock Exchange.

**HUDSON BAY CO.'S SHARES, ETC.**

Bought and Sold for cash or on margin.

ORDERS BY LETTER OR TELEGRAPH  
Receive prompt attention.

**MONEY TO LEND.**

**MORTGAGES & DEBENTURES PURCHASED.**

**Western Canada Loan & Savings Co.**

HEAD OFFICE, TORONTO, WALTER S. LEE, Manager.

Winnipeg Branch, Cor. Portage Av. & Fort St

**F. B. ROSS,**  
Manager Winnipeg Branch

**NORTH AMERICAN**  
**Life Assurance Company.**

HEAD OFFICE, TORONTO, ONT.

HON. ALEXANDER MACKENZIE, M.P., President  
WM. McCABE, F.J.A., Managing Director.

Special attention is called to this Company's  
Semi-Fortnight Investment plan of Insurance.

W. P. GARDY, Provincial Manager,  
Office: Bank of Montreal Building, WINNIPEG

**OGILVIE MILLING CO.**

Mill at Point Douglas.

Capacity . . . 750 Barrels per day.

OFFICE:—Corner King and  
Alexander Streets, Winnipeg.

A Full Stock of Patent Hungarian, Strong  
Bakers' and Spring Extra Flour; Oatmeal, Pot  
and Pearl Barley, Graham Flour, Cracked  
Wheat, Bran, Shorts, Ground Feed, Oats, Bar-  
ley.

Wheat buyers at all Shipping C.P.R. Stations.