

Bell and Dominion Organs and Pianos

Now the evenings are getting longer the call for indoor entertainment becomes more insistent, a good plan to follow is to have good music in your home and keep the young people where you can vouch for the amusement.

There are no better Pianos or Organs made

A. Taylor & Son
Athens Ontario

R. J. Campo announces that he will give away absolutely

FREE

One Starr Phonograph to the person guessing the correct or nearest correct time, that a watch stops, said watch to be wound and sealed in a box to be opened on Xmas eve.

One guess free with every dollar spent in store.

R. J. Campo

TOWN'S Furniture Store

Buying becomes a pleasure when you buy here:

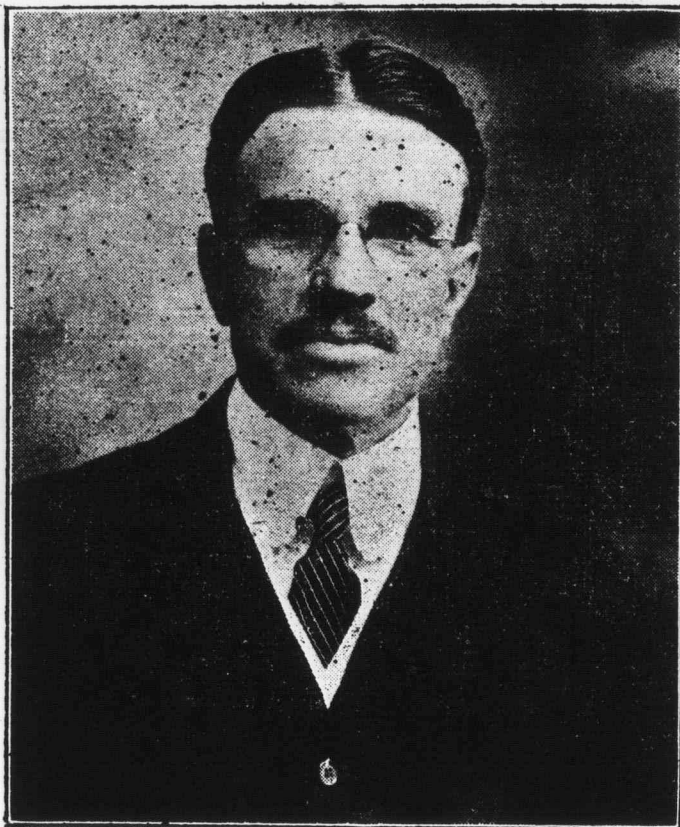
We have a complete line of—

- Parlor Suits Easy Chairs
- Dressers and Stands Couches
- Mattresses, Springs Iron Beds
- Tables and Chairs Sideboards
- Kitchen Cabinets Buffets

Picture Framing and Upholstering

Photographs and Records

W. C. Town
Furniture and Funeral Director Athens



VOTE FOR H. A. STEWART
and a Square Deal for Everybody

A Plain Talk To Farmers

The farmers of this country have always held the balance of power and have always in a great crisis, such as this, voted right. They came to the support of Sir John A. McDonald at the time of the Clergy Reserve excitement when he formed the Liberal-Conservative party back in 1856. They supported him when he launched the National Policy in 1878. They put the quietus on Reciprocity and served notice on Taft and Roosevelt that Canada was not for sale. They voted right, in the main, on conscription, and we have faith they will vote right now, viz., in favor of Protection and sound Constitutional Government.

Opposed To Group Control

Let's thrash it all out! We have had enough of wild charges and senseless agitation. There is a natural level -- plain common-sense. Let us see if we can find it! "Rule or Ruin" is a poor slogan. It is the ultimate we fare of Canada that we must seek. Wild charges unsupported by facts are plain lies.

The total value produced by all our manufacturing plants amounts to the colossal sum of \$3,500,000,000 annually. That is quite \$700,000,000 in excess of the total value produced by all our farms. Obviously, the whole financial structure of the country (including the farmer's credit and his life-long savings) would be imperilled if our industries should be wrecked by ill considered class-legislation. The bare possibility of such a thing happening is enough to make us shiver with dread. Yet if the ideas of Cregar, Wood and Morrison are carried out, the results indicated will follow -- not in a few months or years -- but the day after the election. The crisis is very close; in fact it is here. If the farmer maintains his sanity and votes as a patriot, all will be well, but if he is prepared to "go in blindly" the result will be complete ruin to himself and others.

It is a fair question to ask; Who built our Ontario towns? Take a Rural Telephone Directly, anywhere in Ontario, and compare the names in it with those in our towns. It will surprise you to discover that they are the same. It was the farmers and the children of the farmers who built the towns. The towns are the direct creation of the countrymen. They are your towns and to them you retire in old age after the burden and heat of the day is over. They are dear to you, because you saw them grow from nothing, and because your children are there.

Pause for a moment and consider! The farmer produces something more than live stock, cereals and garden and orchard produce. He has children to consider. No ordinary Ontario farm can support for long a grown-up family. Sooner or later the birds will leave the nest; one to be a preacher, another a manufacturer (the most of our manufacturers were born on farms), another a doctor or a lawyer or a merchant. Leaving out immigration the most of our city folk are of country origin. Do they suddenly become less when they leave the farm? Is the boy who remains to take up the paternal acres the wisest? No, he is the least of the lot. How absurd! The town and city take up the surplus of the farms. There is no other place they can go. It has always been so, and always will be so. Town and country are necessary to each other. Their prosperity is mutual. A depopulated countryside means a ruined city; a ruined city means an impoverished countryside. Look at it from another angle! The farmer has his hard-earned surplus not only to invest in mortgages and bonds, and the like; he is a heavy holder of industrial and railway stocks. He is deeply interested in the prosperity of our manufacturers. He would be a fool not to rejoice when these are prosperous, because every dollar of increase means that his surplus capital is increased.

The Stocks He Holds Go Up

The farmer is a sober, thoughtful man. He wants any stocks he holds to go up, not down. His four great industries are crippled, not only will he be deprived of dividends, the stock he holds will be unsaleable or only at a low figure. And this is not the worst. Since the banks are financing the manufacturers to the extent of hundreds of millions, should anything happen to their clients they would be forced, in order to escape bankruptcy, to entail credits all along the line and this would hit the farmers as well as everybody else.

Any dangerous lowering of the present tariff or foolish experiments in the direction of free trade would depress the value of securities (including Government bonds), not by millions, but by billions. The tariff is our only safeguard. With that as a strong shield over us we can carry on. Remove it and since the United States has shut us out we will be on the rocks. A vote for either Cregar or King means an unknown and dangerous experiment, and this is no time to try experiments, with all the world's attention fixed on our Great Bill. On the other hand, a vote for the Hon. Arthur Meighen (and those by sheer merit and good character from the ranks of Hamiltonians) means security, financial prosperity and the highest possible standard of living for our countrymen.

Children Cry for Fletcher's

CASTORIA

Fletcher's Castoria is strictly a remedy for Infants and Children. Foods are specially prepared for babies. A baby's medicine is even more essential for Baby. Remedies primarily prepared for grown-ups are not interchangeable. It was the need of a remedy for the common ailments of Infants and Children that brought Castoria before the public after years of research, and no claim has been made for it that its use for over 30 years has not proven.

What is CASTORIA?

Castoria is a harmless substitute for Castor Oil, Paregoric, Drops and Soothing Syrups. It is pleasant. It contains neither Opium, Morphine nor other narcotic substance. Its age is its guarantee. For more than thirty years it has been in constant use for the relief of Constipation, Flatulency, Wind Colic and Diarrhoea; allaying Feverishness arising therefrom, and by regulating the Stomach and Bowels, aids the assimilation of Food; giving healthy and natural sleep. The Children's Comfort -- The Mother's Friend.

GENUINE CASTORIA ALWAYS

Bears the Signature of

Chas. H. Fletcher

In Use For Over 30 Years

THE CENTAUR COMPANY, NEW YORK CITY

C&B DAILY BETWEEN BUFFALO & CLEVELAND

3 MAGNIFICENT STEAMERS 3

The Great Ship "SEANDREE" -- "CITY OF ERIE" -- "CITY OF BUFFALO"

BUFFALO Daily, May 1st to Nov. 15th -- CLEVELAND

Leave BUFFALO 9:00 P. M. Leave CLEVELAND 7:00 P. M.
Arrive CLEVELAND 7:30 A. M. Arrive BUFFALO 7:00 A. M.

Connections at Cleveland for Cedar Point, Put-In-Bay, Toledo, Detroit and other points. Railroad tickets reading between Buffalo and Cleveland are good for transportation on our steamers. Ask your ticket agent or tourist agency for tickets via C & B Line. New Tourist Automobile Rate -- \$10.00 Round Trip, with 2 days return limit, for cars not exceeding 127 inch wheelbase.

Beautifully colored sectional guide chart of The Great Ship "SEANDREE" sent on receipt of five cents. Also ask for our 6-page pictorial and descriptive booklet free.

The Cleveland & Buffalo Transit Company
Cleveland, Ohio

The Great Ship "SEANDREE" -- the largest and most costly passenger steamer on inland waters of the world. Sleeping capacity, 1500 passengers.

FARE \$5.56

The Churches

Methodist Church

Rev. S. F. Newton, Minister

10.30 a.m. --
7.00 p.m. --
Sunday School --
1.30 p.m. -- Catechism Class.
2.30 p.m. -- Sunday School.
Cottage Prayer Meeting Monday at 7.30 p.m.
Prayer Meeting Wednesday at 7.30 p.m.

Baptist Church

R. E. NICHOLS, Pastor

Plum Hollow --
Sunday School 10.30
Morning Service 11 A. M.
Athens --
11.00 a.m. -- Sunday School.
Evening Service -- 7.00
Prayer Meeting Wednesday evening at 7.30 p.m.
Song Service Evening Sunday at 6.15

PARISH OF

Lansdowne Rear

Rev. V. O. Boyle, M.A., Rector
Sunday before Advent

Christ Church, Athens

2.30 p. m. Sunday School

7 p.m. -- Evening Prayer.

Trinity Church, Oak Leaf

10.30 p. m. Sunday school

11.00 p. m. Evening Prayer

St. Paul's, Delta

2.00 a. m. Sunday School

2.30 a. m. Evening Prayer

Mr. P. G. Follingsworth begs to announce that he has opened up a first class MEAT MARKET in connection with the grocery recently opened on Elgin St. All orders given prompt attention. All orders delivered.

We beg to call your attention to the fact that we carry a very complete line of Drug Sundries and can give you very attractive prices. The

BEAUMONT S. CORNELL

M. B., L.R.C.P., M.R.C.S.
53 James St. E. Brockville
Evenings 7-8 Afternoons 1-4
By Appointment Phone 870

GEORGE W. LEE

Issuer of Marriage Licenses
Clerk of the Village
Athens - Ontario

EATON -- The Auctioneer

Sales conducted at any place in Leeds County at reasonable rates. Farmers Sales and Real Estate a Specialty. Write or call on A. M. EATON ATHENS, ONT.

IMERSON -- The Auctioneer

Write or Phone early for dates or call the Reporter and arrange for your Sale.
H. W. IMERSON, Auctioneer



Effective October 2nd

The following Winter Service is now in effect giving excellent train connections to Toronto, Ottawa, Montreal and Intermediate Points, also to Western Canada, Pacific and Atlantic Coast Points.

LOCAL TIME-TABLE TO AND FROM BROCKVILLE

DAILY EXCEPT SUNDAY

Departures	Arrivals
8.00 A. M.	11.50 A. M.
3.15 P. M.	12.15 P. M.
5.30 P. M.	7.25 P. M.

SUNDAY SERVICE

8.00 A. M.	7.25 P. M.
------------	------------

For rates and particulars apply to
GEO. E. McGLADE
City Passenger Agent
A. J. POTVIN City Ticket Agent
22 King St. West, City Street House Ave

Canadian National Railways

BROCKVILLE - WESTPORT IMPROVED SERVICE

From Carleton Place and from G. T. Station, Brockville.

DAILY

Lv. BROCKVILLE	9.30 a.m.	1.00 p.m.	5.00 p.m.	9.00 p.m.
Ar. WESTPORT	10.45 a.m.	2.45 p.m.	6.45 p.m.	10.45 p.m.
Lv. WESTPORT	7.15 a.m.	11.00 a.m.	3.50 p.m.	7.00 p.m.
Ar. BROCKVILLE	8.45 a.m.	12.45 p.m.	4.45 p.m.	8.45 p.m.

NOT a Motor car car, passengers and hand baggage only.

Steam Train to and from G. T. Station, Brockville.

Daily except Sunday.

Lv. BROCKVILLE	2.30 p.m.	Lv. WESTPORT	9.01 a.m.
Ar. WESTPORT	3.15 p.m.	Ar. BROCKVILLE	12.01 p.m.