

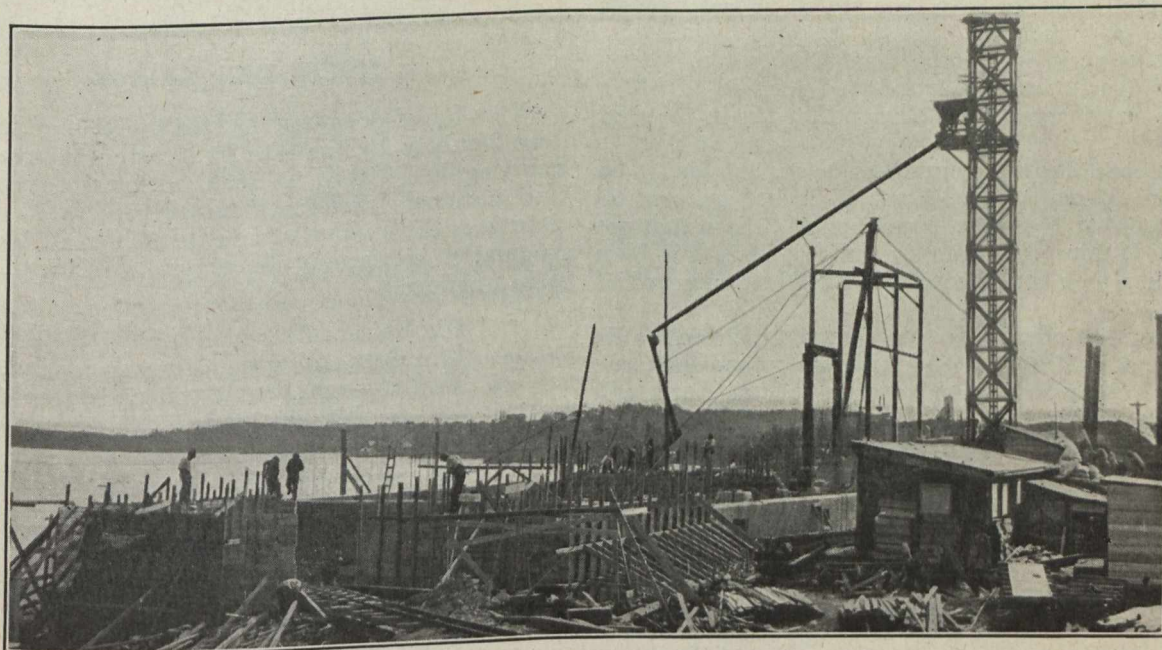
ment on the Casey Cobalt mine a shaft is being sunk on the east claim. This shaft is being put down in the clay in order to cross-cut a vein which has been found in a diamond drill core and appeared very promising.

The Crown Reserve has renewed the lease of the Silver Leaf, as it had the right to do under the original agreement. This agreement which was made on Dec. 4, 1909, was for five years on a royalty basis of 25 per cent., with an option for renewal of for five years on a royalty of 35 per cent., the lessee spending \$20,000 the first year and \$10,000 any succeeding years in work on the property. Mr. W. H. P. Jarvis was elected a director of the Silver Leaf at the recent annual meeting in Toronto.

Bush fires have done much damage to mining plants

The Hollinger has cut the main vein at the 675 ft. level, where it appears the usual grade of ore and about the same width. The extension to the mill should be running next week and the foundations for the 20 Acme stamps will be commenced at once so that the entire plant may be in operation early next year, probably February.

The Tough-Oakes had some delays in getting to work under the new and enlarged scheme of operations owing to various breakdowns at the Charlton plant. These have now been repaired. The English company controlling the Tough-Oakes, the Sylvanite and the Burnside has decided to keep the mine open and to rush work on all drifts and developments that promise immediate returns. Exploration work will be restricted until the horizon clears a little. The Tough-Oakes



Constructing New Power Plant for Hollinger and Acme Mines, Porcupine

in the Elk Lake camp. The plants of the Fleur de Lys, North American, Otisse, Motherlode and the bunk houses of the Mapes Johnston were destroyed.

PORCUPINE, KIRKLAND LAKE AND SESIKINIKA

All mines on a self supporting basis in the gold camp or camps of the north will be affected hardly at all by the European war, which is hitting all other industries so hard in the Dominion. The example par excellence is the Hollinger, where not a man has been laid off and the great scheme of development planned last month is being rushed forward with all haste. The McIntyre is also now on a self supporting basis. So are the Porcupine Crown and the Dome. As these four mines employ the greater part of the men in the camp the war in Europe will make very little difference to mining north of the height of land.

Other prospects not depending on the sale of stock or borrowed money for their operations will not be in the least affected and on the whole the depression and industrial stagnation characteristic of the country will find very little reflection in Porcupine.

mine has recently shipped 101,845 pounds of ore which will run over \$500 to the ton.

Teck-Hughes.—The Nipissing has already taken over the Teck-Hughes and a development scheme on a vigorous scale has been planned. So far only lateral development has been attempted. From this time forward all extension will be made to open up further levels.

GOLD THIEF CAPTURED

The recovery of bullion and arrest of the thief who purloined \$4,000 worth of gold from a guard on the trail between Telegraph Creek and Deace Lake has been reported to Superintendent Colin Campbell, head of the Provincial Police Department by wire from Telegraph Creek.

The message stated that a Frenchman, named DeForrest, was captured on Saturday at a point twenty-six miles from Telegraph Creek, and that the prisoner had been brought into that place. All the gold was recovered. De Forrest had about seventeen ounces on his person when arrested, and the balance was found at a spot where the prisoner had cached it following the robbery.