

**Eric Lance Tooth Harrow**

Is the finest and most useful article that can be placed on a farm. The teeth are so shaped that they tear rough ground, and cultivate and make the finest seed bed possible. Once used on a farm, it will be the last implement parted with. Made strong and adapted to the roughest usage. 3-section set, \$10.00; 3-section set, \$15.00; 4-section set, \$20.00. Each section covers 3 feet of ground in width.

**Eric Iron Works, Limited**  
MAKERS  
St. Thomas, Ont.

TO FARMERS' CLUBS

**Cunard Line, Canadian Service**

Have opened up an

**IMMIGRATION DEPARTMENT**

TO arrange for Labor for you from the Old Country. We have an organization of over 2,000 Agencies, many in the Heart of the Agricultural Districts of England, Scotland and Wales.

**Tell Us, If You Want Help**

Drop the office a line, and if necessary we will gladly come and see you and arrange details.

**The Cunard Steamship Co., Limited**  
J. B. HOSEASON, IMMIGRATION AGENT  
114 King Street West, Toronto, Ont.

**The Call of the North**

DO you know of the many advantages that New Ontario, with its millions of fertile acres, offers to the prospective settler? Do you know that these rich agricultural lands, obtainable free, and at a nominal cost, are already producing grain and vegetables second to none in the world?

For literature descriptive of this great territory, and for information as to terms, homestead regulations, settlers' rates, etc., write to

**H. A. MACDONELL**  
Director of Colonization  
Parliament Bldgs. TORONTO, ONT.

**Government Standard Seeds**

Alsike, Red Clover, and Timothy; write for samples; prices moderate.  
**SHIPMAN & DAWSON, Cannington.**

**Don't Blame the Engine**  
Buy your Batteries right. See they have the Black Cat Trade, Mark and its "NINE LIVES."  
**X-CELL DRY BATTERIES**

**SALES** procured everywhere  
**EGERTON R. CASE**  
Res. and Atty. Dept. E, Temple Building,  
Toronto. Booklets on request, 20 yrs. experience

**BASIC SLAG**

WILL BE SUPPLIED FREE OF CHARGE TO A LIMITED NUMBER OF ONTARIO FARMERS.

We have resolved that the merits of Basic Slag as a fertilizer in the renovation of old worn out pastures on stiff clay or sour soils, shall this season become known in every agricultural district in Ontario.

Applications are therefore invited from farmers in districts where BASIC SLAG has not hitherto been used, who have land answering the above description, and we are prepared to supply a ton of Basic Slag free of charge to such farmers as we may select, to be distributed broadcast over two acres of land.

A preference will be given in cases where the Slag can be applied to a field adjoining a public highway. We are not philanthropists and we are cheerfully spending thousands of dollars this season to make the merits of BASIC SLAG known in Ontario.

Once this is achieved our money will come back because the farmers in Ontario will find it as profitable to use Basic Slag as their fellow agriculturists do in the Maritime Provinces. Early application is requested.

**THE CROSS FERTILIZER CO., Ltd., SYDNEY, N.S.**

Or to Their Sales Agents:  
For Western Ontario, A. E. WARK - Wanstead, Ont.  
For Eastern Ontario, A. L. SMITH - 220 Alfred St., Kingston, Ont.  
For Quebec, A. GUERTIN, 534 Notre Dame St. West, Montreal, Que.

**Grand Trunk Railway System**

**COLONIST RATES**

On Sale Daily

March 15 to April 15 Inclusive

TO

Vancouver, B.C. Spokane, Wash.  
Victoria, B.C. San Francisco, Cal.  
Prince Rupert, B.C. Los Angeles, Cal.  
Seattle, Wash. San Diego, Cal.

Mexico City, Mexico

AT LOW RATES.

Proportionate low rates to other points in Arizona, British Columbia, California, Idaho, Mexico, Montana, Nevada, Oregon, Utah, Washington, etc. From all stations in Ontario. Ask Grand Trunk Agents for full particulars.

The Grand Trunk Pacific Railway is the shortest and quickest route between Winnipeg, Saskatoon, Edmonton.

Berth Reservations, Literature and full Information from any Grand Trunk Agent.

**Homeseekers' Excursions**

To Manitoba, Saskatchewan and Alberta

Each Tuesday March to October inclusive via Chicago and St. Paul. Through coaches and Pullman Tourist Sleeping Cars will leave Toronto 11 p.m. on above dates for WINNIPEG.

No Change of Cars.

WINNIPEG AND RETURN \$35.00  
EDMONTON AND RETURN \$43.00

Tickets good for 60 days. Proportionate low rates to other points.

**Settlers' Excursions**

To Alberta and Saskatchewan March 11th.

and every TUESDAY thereafter until APRIL 29th inclusive, from stations in Ontario, Peterboro, Port Hope and West.

LOW RATES

Through Coaches and Tourist Sleepers to WINNIPEG without change, leaving Toronto 11.00 p.m. on above dates.

**Government Standard SEEDS**

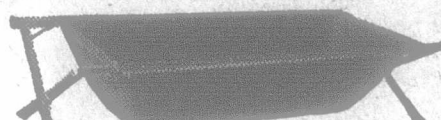
Sold under the guarantee that if they do not entirely satisfy you on arrival you may ship them back at our expense. We buy most of our seeds directly from the farmers here in Haldimand County.

- ALFALFA or LUCERNE.—\$11 per bush.
- RED CLOVER.—\$15 per bush.
- ALSIKE.—\$15 per bush.
- TIMOTHY.—\$3 per bush.
- O. A. C., No. 21 BARLEY.—80c. per bush.
- SILVER MINE OATS.—55c. per bush.
- SIBERIAN OATS.—55c. per bush.
- BANNER OATS.—55c. per bush.
- LIGOWO OATS.—55c. per bush.
- GOLDEN VINE PEAS.—\$1.75 per bush.

We will pay freight in Ontario on three bushels of Clover Seed.

Bags extra, cotton 25c., jute 10c.  
Cash with order. Ask for samples.

**The Caledonia Milling Co. Limited**  
Caledonia Ontario

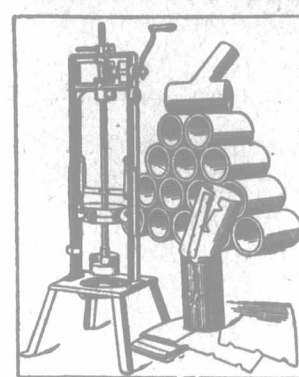


**"A Godsend to Humanity"**

On a Saturday evening when you pull out that old wash tub to take your bath, and the only part of your body which you can get in it is your feet, have you not thought of that nice bath of your friends in the city and wished you had it in your home, where you could sit right down and splash the water around you? BUY ONE OF OUR FOLDING BATH TUBS and you have it for \$7.50, delivered to any part of Ontario. Inside measurements of our bath tub are 5ft. long, 2ft. wide, 18 inches deep and weighing 15 lbs. Two pails of water are all that are required to give one a proper bath, as the bottom rests on the floor, permitting the water to come to the body. This bath tub can be taken to the kitchen range for your bath and when finished with it, rolled up and set away in a corner.

**FOLDING BATH TUB CO., LIMITED**  
Gananoque, Ontario.

**MAKE YOUR OWN TILE**



Cost \$4.00 to \$6.00 per 1,000

Hand or Power  
Send for Catalog

**Farmers' Cement Tile Machine Co.**  
Walkerville, Ont.

**FERRY'S SEEDS**

Ferry's Seeds prove their worth at harvest time. After over fifty years of success, they are pronounced the best and surest by careful planters everywhere.

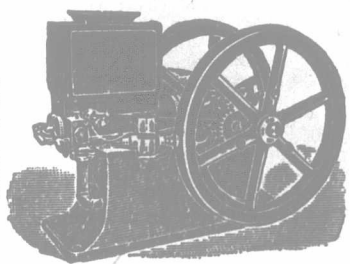
Your dealer sells them. 1913 Seed Annual free on request.

**D. M. FERRY & CO.**  
WINDSOR, ONT.

**YIELD PRESIDENT SUSPENDER NONE SO EASY**

**Stop Drudging — Buy a "Monarch"**

MAKE your farm life easy with a "MONARCH" Engine to do the chores. Wife, daughter or son can run it. Every part in this engine is made by specialists. It has conveniences and equipment devices found heretofore only in automobile engines, and bearings and crank and piston-rod of greater size and durability than standard. Learn of these from our "red-circle" folder.

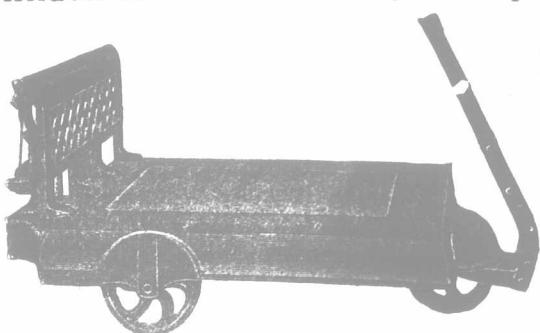


Send post card for free "red-circle" folder, and price list and terms on sizes 1 1/2 to 35 h.-p.

**CANADIAN ENGINES, LIMITED, DUNNVILLE, ONT.**

East of Peterboro, Ont., and in Quebec and Maritime Provinces, sole selling agents are The Frost & Wood Co., Ltd., Smith's Falls, Ont.

**WAGON AND STOCK SCALE, a Money-saver to you, Mr. Farmer**



So often you lose money because you are not quite sure of the weight of the article that is changing hands, and by just putting it on the scales your eyes are opened, and you are in a position to judge very accurately as to what this or that particular thing is worth. Write to-day for our illustrated catalogue, telling you about the Three-wheeled Wagon and Stock Scale, Capacity, 2,000 lbs. All material and workmanship first-class and guaranteed. Address:

**The Aylmer Pump & Scale Co., Limited**  
AYLMER, ONTARIO