

ment to their well-known block machine.

An extensive set of friezes and belts courses so arranged as to give perfect return corner effect, will greatly please and interest contractors, builders and architects.

The new Model "E" interchangeable 24-inch block machines will also be shown. New face plates in endless variety. Porch pier block molds with fluted corners, and round designs, will further prove that this Company intends to remain in the lead.

Their stellar attraction, however, around which centers the great interest of this splendid array of new features, will be the Ideal concrete mixer, which they at last have brought to that perfection detail which entitles it to be classed an "Ideal."

Our readers are cordially invited to inspect this exhibit, and we can assure them that at the headquarters of the the Ideal Company, they will find a corps of attendants who will be pleased to explain as well as demonstrate by actual operation everything shown.

NEW COMPANIES.

St. Paul Cobalt Mining Company, Limited, Cobalt, Ont., incorporated, capital \$600,000. Directors, A. G. Terrill, S. F. Nelson, and H. Gibson.

Anthony Blum Gold Mines, Limited, Toronto, Ont., incorporated, capital \$100,000. Directors, J. G. Shaw, J. Montgomery, and J. G. Strong.

Coleman & Quebec Mining Company, Limited, Ottawa, Ont., incorporated, capital \$1,000,000. Directors, V. O'Connor, R. Mason, J. Wilson, A. T. Shillington, and J. Carss.

Algoma Custom, Smelting & Refining Company, Limited, Sault St. Marie, Ont., incorporated, capital \$250,000. Directors, T. H. Pollock, J. Hermann, W. H. Green, H. Appleton, and A. Dunsmore.

Stellar Silver Cobalt Corporation, Limited, Sudbury, Ont., incorporated, capital \$1,000,000. Directors, J. F. Black, J. H. Morin, and C. McCrea.

Delaney & Pettit Sand Paper Company, Limited, Toronto, Ont., incorporated, capital \$50,000. Directors, C. Delaney, C. S. Pettit and G. H. Pettit.

The Vulcan Company, Limited, London, Ont., incorporated, to manufacture furnaces, stoves, etc., capital \$100,000. Directors, R. W. Shaw, E. W. M. Flock, and F. G. Mitchell.

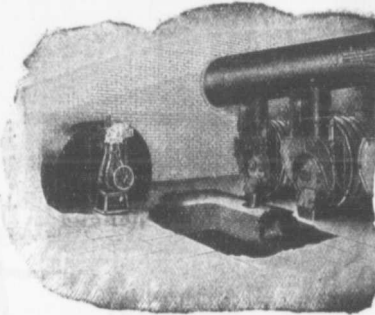
Old Chap Mining Company, Limited, Cobalt, Ont., incorporated, capital \$1,000,000. Directors, W. H. Francis, R. G. Coan, and Fay W. Libby.

Canadian Clothespin Manufactur-

Portland Cement...

HIGH GRADE GERMAN BRANDS FOR GRANOLITHIC AND ARTIFICIAL STONE SIDEWALKS.

Sewer Pipes, Best English Cements. Best Belgian Cements Culvert Pipes, &c. W. McNALLY & CO., Montreal

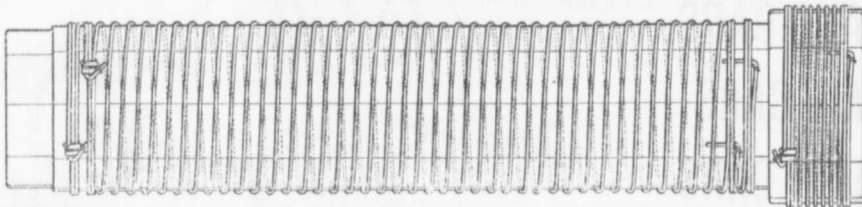


MECHANICAL DRAFT

- Short Stacks
Positive Draft
Saves Fuel
Burns Cheap Coal
Constant Steam Pressure
Independent of Weather

Catalogue P

CANADIAN BUFFALO FORGE COMPANY, LTD. MONTREAL, QUE.



The Dominion Wire Wound Wood Water Pipe

Showing special method of winding with two independent parallel wires. The great advantage of this is, that in event of one wire becoming damaged, the pipe still retains a factor of safety of 2.5.

Made only by

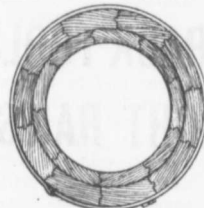
THE DOMINION WOOD PIPE CO., LIMITED

NEW WESTMINSTER, B. C.

LIMITED

Also Manufacturers of Continuous Stave Pipe for Irrigation and Power Purposes.

WRITE FOR CATALOGUE.



End view of Pipe and Coupling.

The Northern Electric and Manufacturing Co., Limited

MONTREAL AND WINNIPEG

TELEPHONES, SWITCHBOARDS, FIRE ALARMS, LINE MATERIAL AND SUPPLIES

GENERAL OFFICE AND FACTORY

Corner Notre Dame and Guy Street, MONTREAL