

Issued Each Week - Only One Dollar a Year

VOL. XXX.

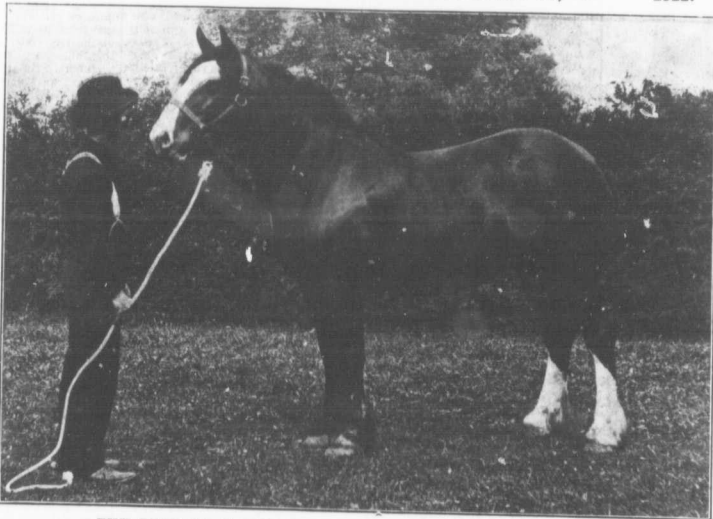
NUMBER 3

FARM AND DAIRY & RURAL HOME

PETERBORO, ONT.

JANUARY 19,

1911.



THE TYPE OF BROOD MARE TO PRODUCE MARKET TOPPERS

The market is keenest for horses weighing 1,600 pounds and over. He who is wise and who seeks to breed horses for profit will take advantage of this fact and produce what the market demands. The type, as here illustrated, is the kind the buyers are after. Even poor ones of this class command prices equal to the good ones of lighter breeding. He who has light horses these days finds them a bill of expense and slow of sale. Our illustration shows Lady Rose of Ferndale, a registered Canadian bred Clydesdale mare, owned by Fierheller Bros., Oxford Co., Ont. She is one one the likes of which we need many more. Farmers generally will be well repaid if they breed this sort.

DEVOTED TO
BETTER FARMING AND
CANADIAN COUNTRY LIFE