

provement in the automobile and improvement in our pavements will progress hand in hand. The one is complementary of the other. Good pavements will permit of lighter, cheaper and more useful vehicles, while improvement in the latter will increase the demand for better roads. When the new motor has made sufficient headway to convince the public that it is to be a permanent fixture, a new pavement policy will come to the front with a rapidity and force that will astonish people.

"With the elimination of the horse, the smoke-emitting chimney and a few other controllable nuisances, the city will become as healthy as the country. As a matter of fact the city will ere long become preferable to the country from a sanitary point of view, and nothing will tend more to effect this change than the elimination of the horse and

the consequent cleanliness of the streets. The day when the new order of things will be in full swing cannot arrive too soon.

"It is satisfactory to know that the new vehicles have made their debut in this city. A strong company has been formed to manufacture them, and within a few months the automobile will be put to a practical commercial test. We understand that a number of self-propelled cabs will be put in commission in Toronto on May 1st, all of them being manufactured in this province. Our pavements are fairly well adapted for the motors, and as there are few hills in the city the automobile will have a decent opportunity in Toronto of showing what it can do. It is said that the electric cabs were able to get about during the recent snow storm in New York, when locomotion by horses was impossible. If the

new conveyance fulfils what its makers promise, it is destined to be a big success in Toronto. It is not difficult to imagine a time in the near future when iron rails in cities will be superfluous, and when the trolley may be declared a nuisance. As an enthusiastic New York editor remarks: 'The possible changes which will be brought about by the new motors are almost illimitable, and the liveliest imagination may not be able to go too far in picturing them as they will occur actually in a future which is separated from the present by a few years only.'

The McPherson Shoe Company, Hamilton, Ont., are installing in their works one of the Royal Electric Company's fifty h.p. S.K.C., two-phase motors. This is to replace their present steam plant.

JOHN J. KELLER & CO.

104 and 106 MURRAY ST.
NEW YORK

220 Church St., Philadelphia.

135 Pearl Street, Boston.

**Aniline Colors,
Dyewood Extracts,
Sumac and
Nutmeg Extracts.**

FAST COLORS for Wool Dyeing,
One Dip Cotton Colors, Novelties
and Specialties for Calico
Printing.

MANUFACTURED BY

JOHN R. GEIGY & CO.
BASEL, SWITZERLAND

**LIGHT YOUR
FACTORY WITH**

LUXFER PRISMS

The latest device for

LIGHTING

dark rooms and
offices

By Daylight

For catalogue
and estimates
write to

**Luxfer Prism
Co'y, Limited.**

58 Yonge Street, - TORONTO.

WE MANUFACTURE

**Shafting, Pulleys
Hangers
Tube Cutters
Pipe Cutting Machines
Swing Saws
Wood Lathes
Dough Mixing Machinery
PAPER BOX MACHINERY.**

Special Machinery of all kinds.

C. T. PENDRITH & CO.

Nos. 73 to 81 Adelaide St. W.,
TORONTO.

Telephone 1535.

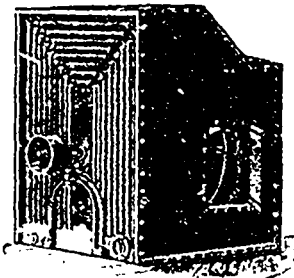
HEATING . . .

The Fan System of Steam Heating for Heating
of Factories and all Classes of Buildings.

DRYING . . .

Appliances for Drying

**Lumber, Brick, Wool, Cloth,
Hair, Soap, Glue, etc.**



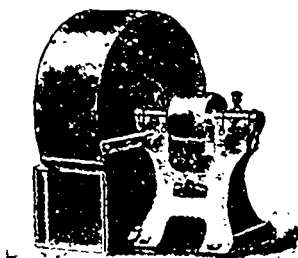
Heater and Housing.

VENTILATING . . .

Ventilating Fans for removal of Dust, Foul Air, etc.

WRITE FOR CATALOGUE AND PRICES.

**McEachren Heating and
Ventilating Co., GALT, ONT.**



Fan.

F. E. ATTEAU & CO.

53 Colborne Street
Toronto,

15 Lemoine Street, Montreal.

Boston, New York,
Philadelphia, Chicago, and
Gloversville, N.Y.

**Dyewood Extracts,
One Dip Alizarines,
Aniline Colors,
Dyestuffs and
Chemicals.**