

## IN THE WORLD OF LABOR

### Gleaned From the Exchanges and Other Sources

#### A Budget of News for Those Interested in Labor

The Prince Albert Sask. Typographical Union has secured an increase in the newspaper scale of \$1.50 per week. The agreement will be in force for a period of one year.

Edmonton, Alta., laborites succeeded in electing J. A. Kenny for a second term on the Edmonton board, another candidate for the board of education only failed to win out by a very slim margin.

There are now more than 300 hands employed in the big plants of the Canadian Explosives Corporation at Nobel, Ontario, and the number is steadily increasing. It is said that at least a thousand more will be employed in the Spring.

Under the new agreement recently arranged by the Longshoremen's Union of Halifax, N. S., with the steamship agents at that port, a thousand men will be benefited by an increase of five cents an hour on both day and night work.

The Fish Packers have organized a local union at Prince Rupert, B.C. and elected representatives to the Central Labor Union. A local of the International Brotherhood of Boilermakers has also been started with a large list of charter members.

According to the Financial Post, the Canadian Banks are in a decidedly prosperous condition and business is on the high up-grade. Bank clearings for the week ending Thursday, Feb. 1st, showed an increase as compared with the corresponding period last year, of 18.9 per cent. In the west the gain was 21.1 and in the East 18.0 per cent.

Retail clerks in Vancouver, B.C. who have had a strictly local organization, at a meeting attended by over 300 workers at the craft were addressed by members of the Trades and Labor Council and decided by a unanimous vote to organize a local of the International Retail Clerks Protective Association and get in touch with the general labor movement.

The fiftieth anniversary of Montreal Typographical Union No. 176 was celebrated on Saturday evening Jan. 27th, by a grand banquet in the Quebec Hotel, a most enjoyable evening was spent by the members and their friends. It may be said that this local is the oldest International union in the Province of Quebec and it was never going better than at the present time.

President McVey of the British Columbia Federation of Labor addressed the convention of the Washington State Federation of Labor, which convened recently in Everett, and told them a few things about the Canadian disputes act, advising them to oppose any effort to introduce a similar measure in the state. By an unanimous vote the convention decided for no Lemon act in their.

Owing to the high cost of paper and printing material the Winnipeg newspapers have found it necessary to advance their subscription rates.

The Telegram and the Tribune afternoon papers have made an increase from 25 cents a month to 10 cents a week and the Free Press raised the price of its morning edition from 10 cents per week to 50 cents a month and the Evening edition from 25 cents per month to 45 cents as well as advancing advertising rates. The people say the price for wanting to know, and the pulp and paper mills are raking in the fat dividends.

Many of the towns along the Canadian Northern Railway in Western Canada have been snowbound for periods of more than a week at a time during the present winter on account of unprecedentedly large snowfalls and in many cases shortage of coal and other supplies has caused a serious situation. The same state of affairs prevails on many of the branch lines on the other big roads. It is stated that as a rule heavy snowfalls during the winter are generally followed by good crops the succeeding season and if the rule holds good in 1917 it may round out right at the close up.

The Farmers on Prince Edward Island have a Provincial Co-operative Poultry Association and last year \$12,595 worth of eggs, valued at \$206,000 were handled and sold through its various egg circles of which some fifty have been organized in the province. The output for 1916 showed an increase of 261,000 dozen over the number handled in 1915. The average price received last year was 25 1-2 cents per dozen. This association has not only secured a better price for the poultry raisers, but has largely eliminated the profits of the middleman and as a result cheapened the price to the consumers.

There are several organizations of the women's auxiliary to the International Association of Machinists in Canada and an effort is to be made to organize others and make of them a force that will do much to advance the interests of the craft. The locals in Toronto and Winnipeg are especially active, are doing splendid work and have duly demonstrated that when the women folk get interested they can make their influence felt. In both cities the members of the I.A.M. fully appreciate the good they have done and say that no mistake was made in getting them into line with the movement.

According to the B.C. Federationist, six metalliferous mining companies in British Columbia paid out in dividends to their shareholders in 1916, \$2,891,583; this being an advance of nearly 100 per cent. over the dividends of 1915. This however does not show the earning capacities of these six mines as in every case the directors have passed over to surplus or reserve accounts large amounts and have also expended large sums on extensions, equipment and the purchase of new properties. The Granby mines dividend showed a 400 per cent. increase over that of 1915. These statistics do not take into account the operation of numerous private concerns doing business in the province.

The fifth annual meeting of the Hamilton Labor Temple Association

## Why We Want Church Union in the Prairie Provinces

By President WALTER MURRAY,  
University of Saskatchewan

In a municipality in Saskatchewan settled fully twelve years ago there are about 5,000 people. The main line of the Canadian Northern Railway runs through it. In this municipality there are 33 English-speaking ratepayers, and about 1,000 Community Danubians. The religious needs of 4,000 people are ministered to by one Polish priest, one Greek Catholic and a student missionary for a portion of the summer. Beyond the borders of the municipality are two towns with a liberal supply of clergymen.

In the prairie provinces there are at least 100,000 Ruthenians. They are looked after by approximately thirty Catholic priests, a half dozen Greek Catholics, about a dozen Protestant ministers and students—a total of possibly fifty. One shepherd to 3,000, on the average. As a matter of fact, there are large districts unvisited by priest or parson.

The immigrant to Western Canada brings with them the memory of their national religion. There are Norwegian Lutheran, Swedish Lutheran and two German Lutheran religious organizations, each distinct and separate. There are German Catholics, French Catholics, Polish Catholics, Greek Orthodox Catholics. The fragments of their national soil and cast upon Canadian shores are left many of them uncared for by the National Church in Europe. What more natural than that they should look to the national churches in Canada or remain neglected. There are, I have been told, groups of the finest people from Europe who would see a clergyman often than twice or thrice a year. Is it not time for the churches in Canada that are national in spirit (if not in organization and name) to get together and work as one for the religious up-building of the new nation in Canada? To these European peoples religion is a national necessity.

One person in every three in Western Canada has a mother tongue other than English. In large districts English is as little known as it is in Austria.

A Presbyterian Superintendent reports one hundred and fifty mission fields closed for lack of men and means; while a Presbyterian Principal wrote that in other Presbyterian

will be held in the Labor Hall, John Street South, on Wednesday evening, February 28th, when the financial statement and report of the auditors will be submitted.

The term of three of the directors will expire with this meeting, and elections will be held to fill the vacancies. The present incumbents being eligible for re-election. The financial report is of an encouraging nature, and shows that good headway has been made during the year. It is hoped that there will be a large turnout of the shareholders, who will thus be able to learn for themselves of the progress that has been made, and take part in the discussion in regard to plans for the future welfare of the association and the great work that it has in hand.

## Children Cry FOR FLETCHER'S CASTORIA



# GRAY-DORT

## The First Impression Lasts

First sight of the 1917 Gray-Dort will impress you. The trim, smart lines—the new conveniences and the comfortable, substantial atmosphere of the car carry great conviction. Then get down to brass tacks. Look under the hood, under the body. Learn for yourself

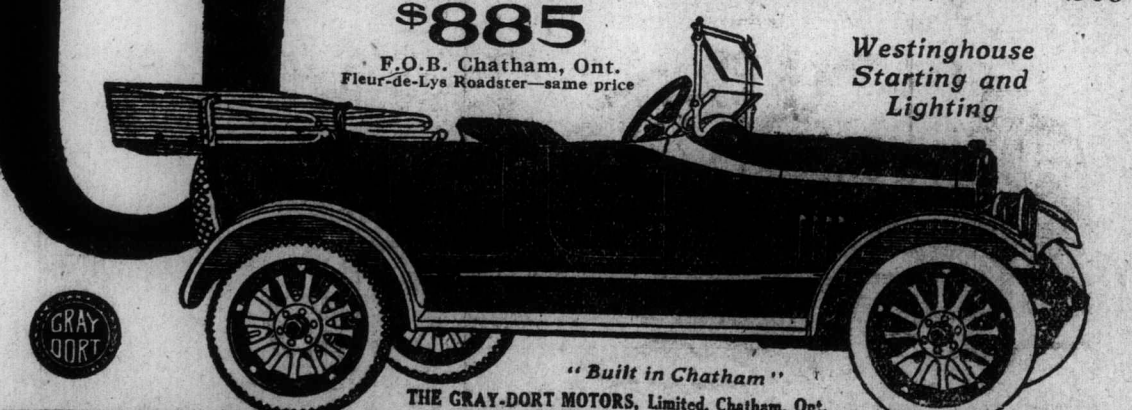
the absolute honesty and service-giving sturdiness of every working part. Ride in the car—put it to every test. Find out how it performs under every condition of service. Your first impression of quality will be verified. See the 1917 Gray-Dort, a better car than ever.

A. Tweedle, Dealer, 194 Dalhousie St., Phone 2306

\$885

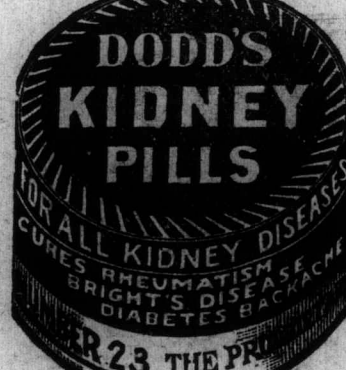
F.O.B. Chatham, Ont.  
Fleur-de-Lys Roadster—same price

Westinghouse Starting and Lighting



"Built in Chatham"

THE GRAY-DORT MOTORS, Limited, Chatham, Ont.



## "I FEEL LIKE A NEW BEING"

"FRUIT-A-TIVES" Brought The Joy Of Health After Two Years' Suffering



MADAM LAPLANTE

35 St. Rose St., Montreal, April 4th. "For over two years I was sick and miserable. I suffered from constant headaches, and had palpitation of the heart so badly that I feared I would die. There seemed to be a lump in my stomach and the constipation was dreadful. I suffered from Pain in the Back and Kidney Disease."

I was treated by a physician for a year and a half and he did me no good at all. I tried "Fruit-a-tives" as a last resort. After using three boxes, I was greatly improved and twelve boxes made me well. Now I can work all day and there are no Headaches, no Palpitation, no Heart Trouble, no Constipation, no Pain or Kidney Trouble and I feel like a new being—and it was "Fruit-a-tives" that gave me back my health."

MADAM ARTHUR LAPLANTE.  
50c. a box, 6 for \$2.50, trial size, 25c. At all dealers or sent postpaid by Fruit-a-tives Limited, Ottawa.

## MANY LAWYERS TO BE AT CONFERENCE

Great Majority of Those Attending Will be of the Legal Profession

(Associated Press)  
London, Feb. 17.—The War Council of the British Empire, over which Premier Lloyd George will preside, will constitute a supreme proof of the commanding influence which lawyers exercise in British affairs, for an overwhelming majority of the statesmen present will be members of the legal profession.

One of the lawyers who will attend the Council has played a conspicuous part on the field of battle. General Smuts, who has been in command of the British forces in East Africa, is a member of the Cape Town bar, and served as State Attorney of the Transvaal.

To find a lawyer-soldier of General Smuts's eminence in the annals of British soldiery, it is necessary to go back to the Parliamentary war, of the seventeenth century, in which General Preton took a prominent part. A motion for the exclusion of all lawyers from the House of Commons was discussed in 1649, but was defeated after a long debate.

Mr. Justice Macdonald awarded John Doe \$1,200 damages in his action against the Surf Inlet Mining Company, finding that they had been negligent in the loading of a ship. Alien enemies, who have been interned by the Federal authorities, are not to be allowed to work in the mines in British Columbia. Ten have already been ordered out.

Loss of Appetite is also loss of vitality, vigor, tone. To recover appetite and the rest take Dodd's Sarsaparilla—that strengthens the stomach, perfects digestion, makes eating a pleasure. It also makes the blood rich and pure, and steadies the nerves.



CAPTURED SEA CAPTAIN. Capt. Ellery, of the Steamer Lynfield, whose vessel was sunk by a German submarine.

## NOTICE!

### AUTOMOBILE OWNERS

We beg to announce that we have opened in connection with our Taxi-Cab business, a first-class Repair Department, which is in charge of Mr. Howard Gibbard, late of the Overland Co.

Quick Service and Satisfaction Guaranteed

## A. MALONEY

Office Phone 730.

## The Overland Garage and Service Station

### 22 DALHOUSIE STREET

Now ready to take care of repair work on all Overland and other makes of cars.

I. J. HOWES, MECHANIC IN CHARGE

## JOHN A. HOULDRING

Overland Dealer For Brant County



## We Are Still The Leading Plumbing Concern

The fact that our electric business has grown wonderfully has not caused us to neglect our other lines. Each department is supervised by men of experience and we will strive as in the past to give you a high grade of work combined with quick service and reasonable charges. MAY WE SERVE YOU?

## Cowan's

81 Colborne Street  
ELECTRIC

# BRANT MOTOR CO.

Agents for the following cars

## Dodge Bros. Motor Cars

Touring and Roadster ..... \$1,100 and freight  
Winter Touring and Roadster \$1,335 and freight  
Convertible Sedan—Price \$1,685 and freight

## Hupmobile

Touring and Roadster ..... \$1,650 and freight

## Maxwell Cars

Touring ..... \$ 890  
Roadster ..... 870  
Cabriolet ..... 1235  
5-Passenger Sedan ..... 1400  
6-Passenger Town Car ..... 1300

All Cars f. o. b. Windsor.

We are Agents for General Motor Truck's Ranging from 3-4 Ton to 5 Ton.

Every facility for washing and repairing cars in an up-to-date manner. Cars Stored.

## GARAGE AND SHOWROOM

### 39 DALHOUSIE STREET

Bell Phones 370, 515, 2253 Automatic 270

## T. H. & B. RAIL

2-7.52 a.m.—(Daily)—  
ton and Intermediate points  
land, Niagara Falls, Buffalo  
York.

6-2.31 p.m.—(Ex. Sun  
Hamilton, and Intermediate  
Toronto, Peterboro, Win  
Buffalo.

8-5.12 p.m.—(Ex. Sun  
Hamilton, Welland, Buff  
York and Boston.

10-7.08 p.m.—(Daily)—  
ton and Intermediate points  
Ottawa, Montreal, Buffalo  
York.

WESTBOUND  
1-10.09 a.m.—(Ex. Sun  
St. Thomas, Detroit and Ch  
3-2.31 p.m.—(Daily)—  
ford and Intermediate po  
Thomas, Detroit, Toledo,  
and Saginaw.

5-5.12 p.m.—(Ex. Sun  
Waterford and Intermediate  
St. Thomas Chicago and C  
9-9.36 p.m.—(Daily)—  
ford and Intermediate Po  
Thomas, Detroit and Chic

## GRAND TRUNK R

### WAY.

MAIN LINE—EAST  
Departures.

6.35 a.m.—For Dundas,   
and East.

7.05 a.m.—For Toronto a  
real.

4.51 a.m.—For Hamilton,  
Falls and East.

9.30 a.m.—Hamilton, Tor  
intermediate points.

1.57 p.m.—Hamilton, Tor  
aga Falls and East.

1.56 a.m.—For Hamilton,  
to, Niagara Falls and inte  
stations.

6.00 p.m.—For Hamilton,  
to, Niagara Falls and East.  
8.37 p.m.—For Hamilton,  
and East.

MAIN LINE—WEST  
Goderich and intermediate sta  
4.21 a.m.—For London,  
Port Huron and Chicago.

8.53 a.m.—For London, Por  
and intermediate stations.  
9.37 a.m.—For London, Po  
on and Chicago.

9.55 a.m.—For London.  
3.52 p.m.—For London,  
Port Huron and intermedia  
tions.

6.32 p.m.—For London,  
Port Huron and Chicago.  
7.32 p.m.—For London,  
Port Huron and Chicago.  
8.34 a.m.—For London.

## Buffalo & Goderich

Leave Brantford 10.05 a.m.  
Buffalo and intermediate sta  
Leave Brantford 6.00 p.m.  
Buffalo and intermediate sta  
West.

Leave Brantford 10.05 a.m.  
Goderich and intermediate sta  
Leave Brantford 8.15 p.m.  
Gait, Guelph and Nor

Leave Brantford 6.40 a.m.  
Gait, Guelph, Palmerston a  
points north.

Leave Brantford 8.55 a.m.  
Gait, Guelph and Palmerston.  
Leave Brantford 3.55 p.m.  
Gait, Guelph, Palmerston a  
points north.

## Brantford & Tillsonburg

Line.  
Leave Brantford 10.35 a.m.  
Tillsonburg, Port Dover an  
Thomas.

Leave Brantford 5.15 p.m.  
Tillsonburg, Port Dover an  
Thomas.

From South—Arrive Br  
2.45 a.m., 5.10 p.m.

## Buffalo & Goderich

From East—Arrive Br  
9.33 a.m., 8.05 p.m.

From West—Arrive Br  
10.00 a.m., 6.42 p.m.

## G. T. R. Arrivals.

From West—Arrive Br  
1.56 a.m., 7.05 a.m., 9.30 a.m.  
p.m., 3.50 p.m., 6.00 p.m., 8.37 p.m.  
From East—Arrive Br  
7.53 a.m., 9.15 a.m., 9.37 a.m.  
p.m., 6.32 p.m., 7.32 p.m., 8.10 p.m.

## W. G. & B.

From North—Arrive Br  
9.15 a.m., 12.30 p.m., 8.33 p.m.,  
a.m.

## L. E. & N. RAILWA

PORT DOVER TO GAIT

Daily  
Except  
Sunday

Day. Dy. Dy. Dy. Dy. Dy. Dy. Dy.

am. am. am. am. pm. pm. pm. pm.

G.P.S. 7.16 9.12 11.12 1.12 3.12 5.12 7.12

P.S. 7.28 9.24 11.24 1.24 3.24 5.24 7.24

W.P.S. 7.40 9.36 11.36 1.36 3.36 5.36 7.36

W.P.S. 7.52 9.48 11.48 1.48 3.48 5.48 7.48

W.P.S. 8.04 10.00 12.00 2.00 4.00 6.00 8.00

W.P.S. 8.16 10.12 12.12 2.12 4.12 6.12 8.12

W.P.S. 8.28 10.24 12.24 2.24 4.24 6.24 8.24

W.P.S. 8.40 10.36 12.36 2.36 4.36 6.36 8.36

W.P.S. 8.52 10.48 12.48 2.48 4.48 6.48 8.48

W.P.S. 9.04 11.00 1.00 3.00 5.00 7.00 9.00

W.P.S. 9.16 11.12 1.12 3.12 5.12 7.12 9.12

W.P.S. 9.28 11.24 1.24 3.24 5.24 7.24 9.24

W.P.S. 9.40 11.36 1.36 3.36 5.36 7.36 9.36

W.P.S. 9.52 11.48 1.48 3.48 5.48 7.48 9.48

W.P.S. 10.04 12.00 12.00 2.00 4.00 6.00 8.00

W.P.S. 10.16 12.12 12.12 2.12 4.12 6.12 8.12

W.P.S. 10.28 12.24 12.24 2.24 4.24 6.24 8.24

W.P.S. 10.40 12.36 12.36 2.36 4.36 6.36 8.36

W.P.S. 10.52 12.48 12.48 2.48 4.48 6.48 8.48

W.P.S. 11.04 1.00 1.00 3.00 5.00 7.00 9.00

W.P.S. 11.16 1.12 1.12 3.12 5.12 7.12 9.12

W.P.S. 11.28 1.24 1.24 3.24 5.24 7.24 9.24

W.P.S. 11.40 1.36 1.36 3.36 5.36 7.36 9.36

W.P.S. 11.52 1.48 1.48 3.48 5.48 7.48 9.48

W.P.S. 12.04 1.00 1.00 3.00 5.00 7.00 9.00

W.P.S. 12.16 1.12 1.12 3.12 5.12 7.12 9.12

W.P.S. 12.28 1.24 1.24 3.24 5.24 7.24 9.24

W.P.S. 12.40 1.36 1.36 3.36 5.36 7.36 9.36

W.P.S. 12.52 1.48 1.48 3.48 5.48 7.48 9.48

W.P.S. 1.04 2.00 2.00 4.00 6.00 8.00 10.00

W.P.S. 1.16 2.12 2.12 4.12 6.12 8.12 10.12

W.P.S. 1.28 2.24 2.24 4.24 6.24 8.24 10.24

W.P.S. 1.40 2.36 2.36 4.36 6.36 8.36 10.36

W.P.S. 1.52 2.48 2.48 4.48 6.48 8.48 10.48

W.P.S. 2.04 2.00 2.00 4.00 6.00 8.00 10.00

W.P.S. 2.16 2.12 2.12 4.12 6.12 8.12 10.12

W.P.S. 2.28 2.24 2.24 4.24 6.24 8.24 10.24

W.P.S. 2.40 2.36 2.36 4.36 6.36 8.36 10.36

W.P.S. 2.52 2.48 2.48 4.48 6.48 8.48 10.48

W.P.S. 3.04 3.00 3.00 5.00 7.00 9.00 11.00

W.P.S. 3.16 3.12 3.12 5.12 7.12 9.12 11.12

W.P.S. 3.28 3.24 3.24 5.24 7.24 9.24 11.24

W.P.S. 3.40 3.36 3.36 5.36 7.36 9.36 11.36

W.P.S. 3.52 3.48 3.48 5.48 7.48 9.48 11.48

W.P.S. 4.0