

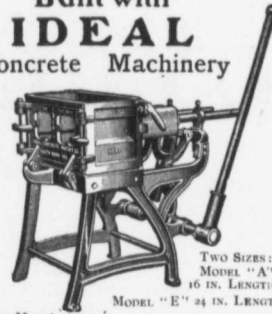
The line of Ideal Concrete Machinery is complete. It has been adopted for the construction of great manufacturing plants everywhere. A portion of the works of the Thomas Motor Car Co., of Detroit, Mich., is shown in process of construction.

Ideal Face Down Concrete Block Machines are made in two sizes, 16 and 24 inch lengths. Interchangeable to 4, 6, 8, 10 and 12 inch widths; adjustable to any length within capacity. Produce countless face designs enabling beautiful effects in residence construction.

Other machines in the "Ideal" line that have become the standard everywhere are Mixers, Brick Machines, Sill and Lintel Machines, Ornamental Column, Spindle, Ball, Sidewalk, Step and Sill Moulds.

Our Catalogue, splendidly illustrated, gives technical information invaluable to every Architect, Contractor, Builder or Manufacturer of artificial Stone. It's expensive to print, but it's free. Ask for it.

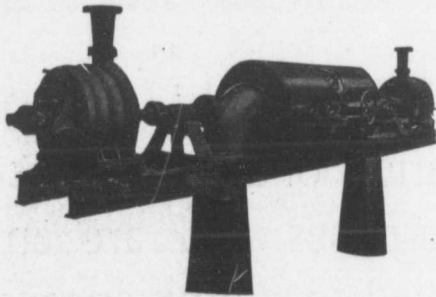
Built with
IDEAL
Concrete Machinery



TWO SIZES:
MODEL "A"
16 IN. LENGTH.
MODEL "E" 24 IN. LENGTH.

IDEAL CONCRETE MACHINERY CO., Ltd., 211 King Street, London, Ontario, Canada
Canadian Sales Agents: **MUSSEYS, LIMITED**, Montreal, Quebec, Toronto, Winnipeg, Vancouver

PUMPS FOR WATER WORKS



WATER WORKS SYSTEMS INSTALLED

Boilers, (Return Tube and Water Tube,) Tanks, Penstocks, Mill Machinery.

BUILDERS IN CANADA OF

"WORTHINGTON" TURBINE PUMPS

Two Worthington 3-Stage Turbine and McCormack Water Wheels, built for Port Arthur, Ont., Water Works, 1440 gal. per minute against 250 ft. head.

The John McDougal Caledonian Iron Works Co.,

Estimates Cheerfully Furnished

HEAD OFFICE AND WORKS: **Montreal.**

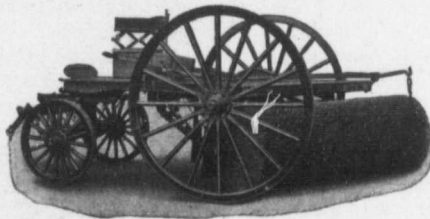
Limited.

DISTRICT OFFICES:

MONTREAL, 82 Sovereign Bank Building.
VANCOUVER 416 Seymour Street.

TORONTO, 810 Traders Bank Building.
NELSON, Josephine Street.

WINNIPEG, 251 Notre Dame Avenue
NEW GLASGOW, N.S., Telephone Building.



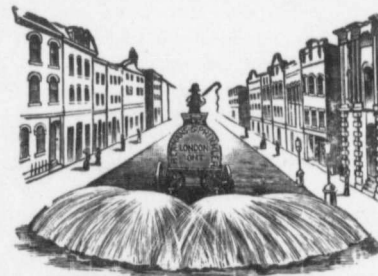
Stackpole.
Patent Improved

Street Sweeping Machine

Is the Standard of
Perfection

BECAUSE no sweeper so effectually does the work for which it is designed as "The Studebaker." It sweeps clean. No sweeper is constructed with the same degree of care and mechanical precision. It wears well. "The Studebaker" has the smallest number of working parts, and has less gearing than any other sweeper made. It is free from all unnecessary complications. With reasonable care it does not get out of order. Send for complete descriptive catalogue.

GEO. HEAMAN, MANUFACTURER



Studebaker Sprinkler

(PATENT IMPROVED)

Does not clog or get out of order. Greatest width of spray. Can be graded from driver's seat to any volume.

We also make an **IMPROVED VERTICAL SPRAY** for pavements

LONDON, ONT.