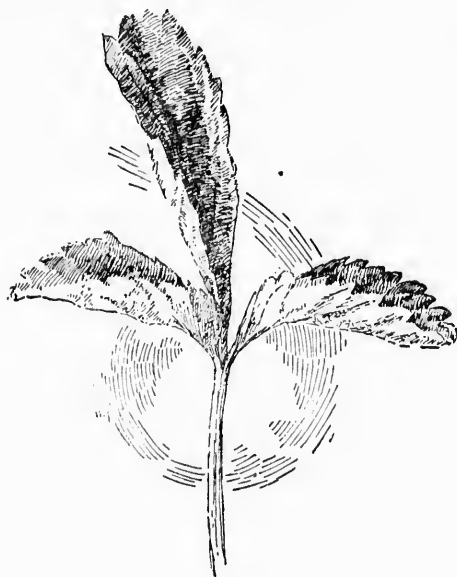


Strange to say, there was hardly any appreciable difference in the health of the two rows at the fruiting time the next year.

An experiment carried on in 1895 with Bordeaux mixture to check this disease gave much more definite results. The plants were sprayed once before fruiting and twice afterwards during the month of August. The results were very satisfactory, the sprayed plants being practically unaffected by rust. The experiment was repeated in 1896, also with satisfactory results, and now that this fungicide is so commonly used against other diseases it will probably be found to be the best agent with which to combat this disease. It should be remembered, however, that in burning the leaves the spores of the fungus as well as many injurious insects are destroyed, and if this treatment is followed by the use of Bordeaux mixture in the spring, there should be no difficulty in controlling leaf rust.



Mildew.

MILDEW (*Sphaerotheca Castagnei*. Lev.)

In dry seasons this fungus which causes the leaves to curl, covering them with a thin cobweb like coating, lessens the crop very materially. Like gooseberry and grape mildew the fruit is also attacked.

REMEDIES.

If Bordeaux mixture is used in early spring as a rust preventive, this disease will also be checked. If it appears to an injurious extent when the berries are ripening flowers of sulphur may be used advantageously. When this is scattered between the plants, the fumes given off under the action of the sun's rays, have a preventive action upon the growth of the fungus.