

Housing Registry can find you a pad If Stovetop living ain't for you...

Home, home in the range ...

That doesn't have to be your theme song if you still haven't found a place to live. One students' union office is doing its best to ensure that homeless students can find accommodation.

The Housing Registry, in Room 280 SUB, has already helped 1,200 landlords and tenants find each other this year, and director Kim Hay says the office is in its busiest season.

"We're handling 20 to 30 listings a day right now," says Hay. Those kinds of figures have brought the Housing Registry's

total number of listings this year to 1,360.

Although the number of listings is down from last year, Hay says the registry isn't offering students less. "The numbers are down a little from last year, but the quality is better." According to Hay, this means fewer listings that resemble the Black Hole of Calcutta, much to the relief of the registry's staff.

For cost-conscious students, though, Hay has bad news. Although there is more housing available to students than in previous years, prices have gone up. "There certainly is

more available, but you have to pay to get it." This increase will result in the average student paying "probably from \$130 to \$185 per month," for housing, compared with an average of \$120 to \$160 last year.

Most students using the registry are looking for apartments to rent or share, according to Hay. That doesn't mean, however, that there aren't more elaborate requests. "Every year we get one or two people who come in looking for farms to rent ... and on the other side of things, some families want someone to look after a car or some plants — basically, to be custodians — each year."

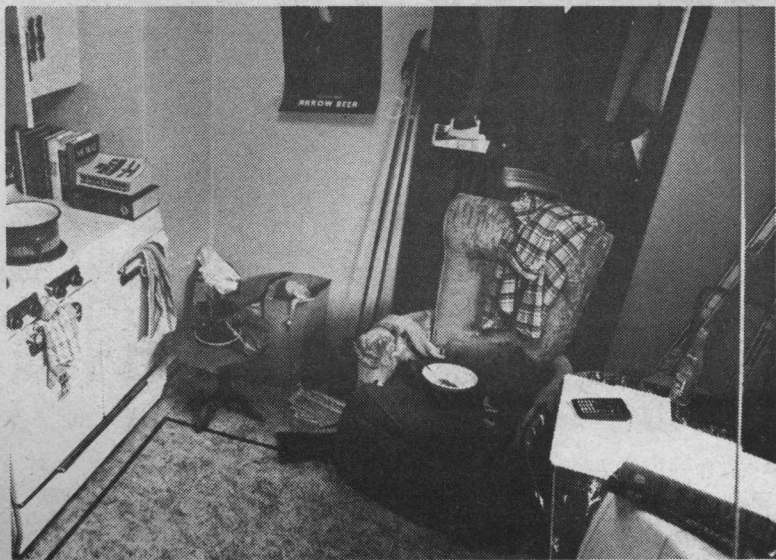
Students seeking housing can take advantage of the registry's free current listings booklet at the office. The listings, updated every second working day, provide the location, rent, and various particulars about each rental unit.

If you still haven't found a place to live, the Housing Registry staff has a few tips.

- it's a lot cheaper to share accommodation than to live alone.
- you pay a lot more for conveniences like room and board.
- apartments are the most common listing; they're probably the most profitable category to check at the registry.
- all on-campus housing, with the exception of a few shared rooms in Lister Complex, is full.
- when checking the registry, it's best to come early in the morning.
- if you need emergency housing, there are some rooms available in Lister Complex. Contact Bert Madill, 432-4281, for details.

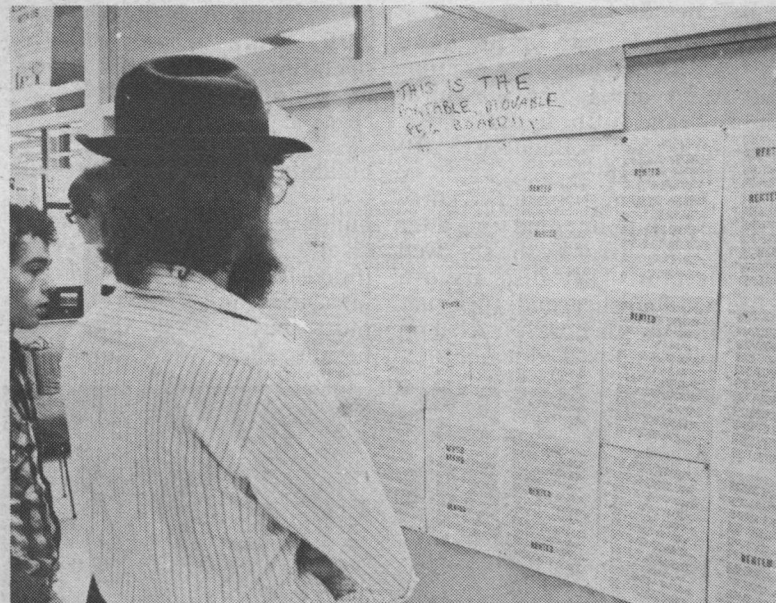
A final warning about the Housing Registry. "We don't find accommodation for students," says Hay, "we just provide the listings."

Good hunting.



The kitchen of an average student after the first week of classes.

Part Time Help Required
Evenings and Weekends
Apply at SUB Games Area



Looking for "Home Sweet Home"

Free info available

Where is the Tory Lecture Theatre?

How do I change my registration?

Where can I find a photocopier?

University students are faced with countless questions about the university. Often, the problem lies in knowing where to start looking for information.

The place to start this year is the Students' Union information desk, located near the south entrance of the Students' Union Building (SUB).

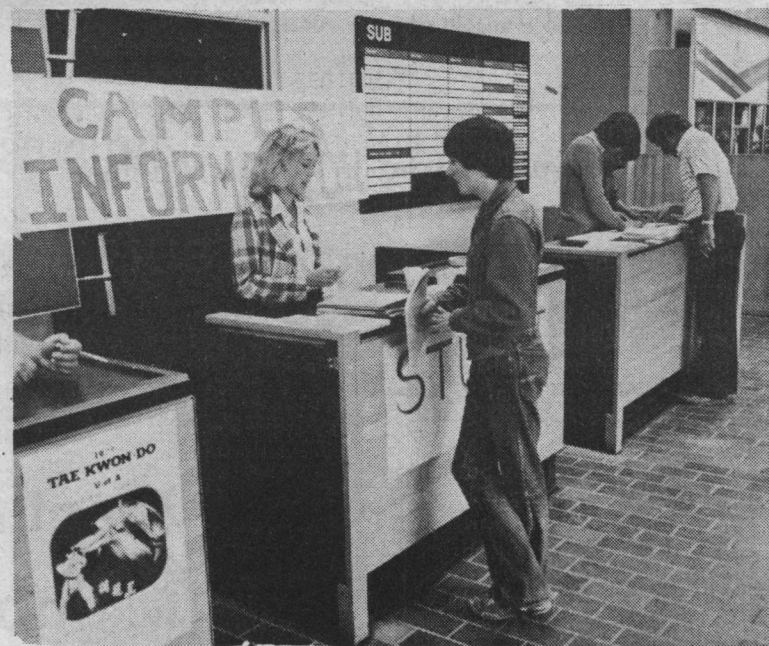
The information desk, previously an extension of the concession booth, has been renovated to alleviate problems which arose between informa-

tion seekers and candy bar dispensers.

Volunteer students will now direct people to a source of assistance and provide them with brochures, pamphlets and other relevant information.

During registration week, two additional information desks will be set up, one in CAB and one in the Physical Education Building.

The most accessible source of information, though, will be roving student guides. The guides, part of the Students' Union's student guide program, will act as walking information booths. They'll be wearing distinctive T-shirts during the first week of classes, and will try to answer all queries.



STUDENT HELP

Info Desk
in SUB

Having difficulties with the red tape?
We can help
Open Sept. 4-8
11-3 Daily
Main Floor
Beside the Candy Counter

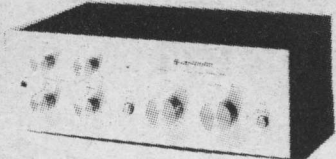
Campus Audio Ltd.

8921-112 St. HUB

KA 3700 AMP

20 watts per channel, min. RMS at 8 ohms, 20Hz-20kHz, with no more than 0.08% total harmonic distortion

- Phono S/N 72dB (2.5mV)
- Large input selector



KT 5500 TUNER

Junction FET, 3-gang FM and 2-gang AM frequency linear variable capacitors

- FM sensitivity 1.9µV
- THD 0.2% (stereo)
- Stereo separation 45dB at 1kHz



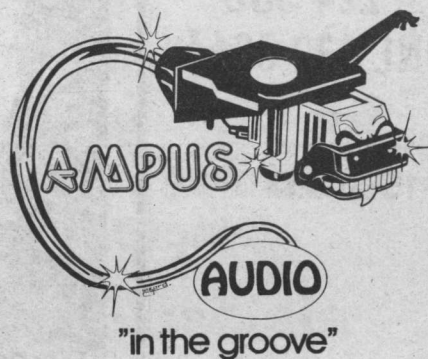
KD 2055 TURNTABLE

Auto-return belt drive turntable with 4-pole synchronous motor

- Wow & flutter 0.06% (WRMS)
- Rumble -65dB (DIN wtd.)
- ARCB cabinet



LS 50 SPEAKERS
3 way 45 W



PACKAGE PRICE
\$799.00

Back to School Tape Specials Maxwell Tape VDC90
TDK Tape SAC90

\$5.50