

seam, and extra widths allowed below the waist-line at the middle three seams are underfolded in box-plaits that are pressed to be quite flat. Jacket fronts that have rounding lower front corners are turned back in long lapels by a rolling coat-collar and open over full vest fronts that are arranged on lining fronts fitted by single bust darts and closed at the center. The vest fronts are gathered at the top and bottom and are crossed by a crush belt. The standing collar is encircled by a ribbon stock. The one-seam sleeves are made over coat-shaped linings and stand out stylishly at the top.

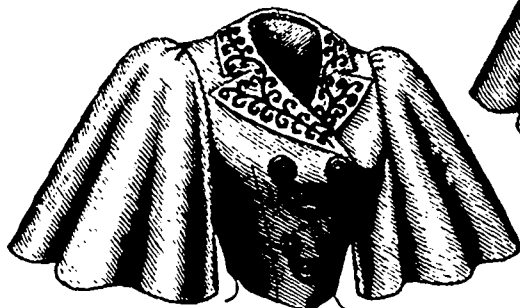
Although the mode is simple, it affords excellent opportunities for becoming combinations of color and material. Figured or plain silk may be united with canvas, drap d'été, tapeline or any other fashionable weave of dress goods. Fancy bands or silk or mohair braid may be added as trimming, but a plain finish is in quite as good taste.

We have pattern No. 9138 in nine sizes for ladies from thirty to forty-six inches, bust measure. For a lady of medium size the garment requires two yards and three-eighths of dress goods forty inches wide, with a yard and five-eighths of silk twenty inches wide. Price of pattern, 1s. 3d. or 30 cents.

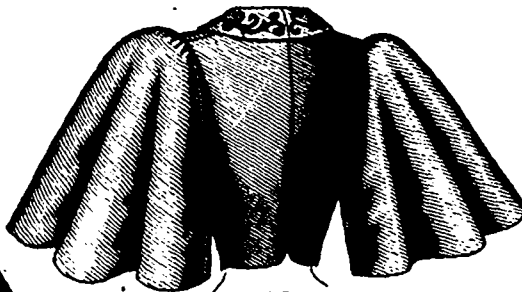
**LADIES' MILITARY BASQUE. (KNOWN AS THE LANCER BASQUE.)**  
(For Illustrations see Page 634.)

No. 9147.—By referring to figure No. 229 W in this number of THE DELINEATOR this basque may be again seen.

The Lancer basque is a jaunty English mode and is here represented made of green broadcloth, the decoration of machine-stitching, braid and graduated frogs being in correct style. The close adjustment is due to double bust darts, under-arm and side-back gores and a center seam, and coat lugs and coat-plaits are arranged in true coat fashion at the back. The basque extends in a short skirt below the waist and the fronts are reversed in small lapels that form notches with a rolling collar made with a center seam. The closing is made invisibly at the center of the front and the lower front corners of the fronts are rounded. The two-seam sleeves fit closely over their coat-shaped linings nearly to the top, where they are gathered and stand out in the approved way.



**1335**  
*Front View.*

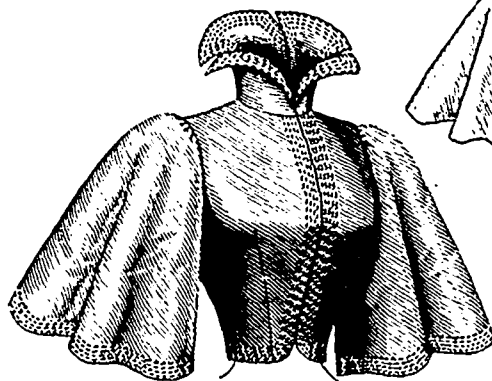


**1335**  
*Back View.*  
**LADIES' BOX ETON JACKET, WITH BELL SLEEVES.**  
(For Description see Page 647.)

Basques of this type depend upon the perfection of adjustment for their successful effect, the finish being invariably in tailor style. Faced cloth, Venetian twill, plain or mixed cheviot and other goods of firm weave may be chosen for the making,

and the finish of braid and stitching here illustrated may be varied to suit individual taste. Instead of frogs a vertical braid trimming may cover the darts, and end in a scroll at the top.

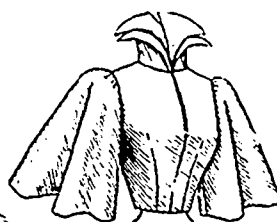
We have pattern No. 9147 in twelve sizes for ladies from thirty to forty-six inches, bust measure. For a lady of medium



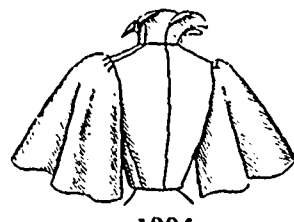
**1334**

*Front View.*

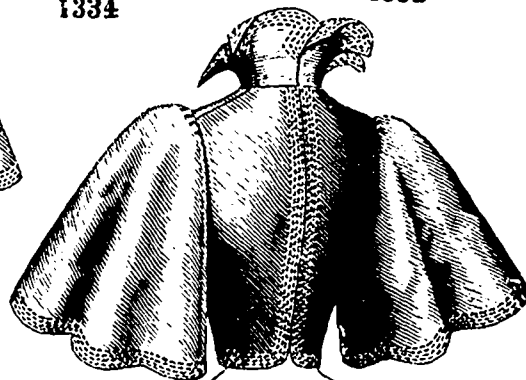
**LADIES' ETON JACKET, WITH BELL SLEEVES.**  
(TO BE MADE WITH A PLAIN OR FANCY LOWER EDGE.)  
(For Description see Page 647.)



**1334**



**1334**



**1334**

*Back View.*

size the basque needs four yards and a fourth of material twenty-two inches wide. Price of pattern, 1s. 3d. or 30 cents.

**LADIES' BASQUE, WITH TWO UNDER-ARM GORES.**  
(DESIRABLE FOR STOUT LADIES.)

(For Illustrations see Page 634.)

No. 9146.—This basque is highly recommended for stout ladies, being fitted with two under-arm gores at each side. It is pictured made of cloth and decorated with braiding. The lower outline of the basque shapes a point at the center of the front and back. The fronts are reversed all the way in tapering lapels and separate toward the shoulders over a vest that is

fitted by double darts taken up with the darts in the fronts. The vest is closed invisibly at the center. A standing collar that closes at the center of the front and a rolling coat collar that separates but very slightly from the lapels add to the stylish effect of the basque. The gathered one-seam sleeves which are arranged over coat-shaped linings, are gathered at the top and the adjustment is close from the wrist nearly to the top, where they stand out stylishly.

The mode is appropriate for cheviot, serge, canvas, challis, cashmere and numerous dress goods and the trimming will accord with the goods. Usually the vest will be made of contrasting goods, the basque, however, agreeing with the skirt which it accompanies.

We have pattern No. 9146 in nine sizes for ladies from thirty-four to forty-six inches, bust measure. Of one material for a lady of medium size, the basque requires four yards and three-eighths twenty-two inches wide. Price of pattern, 1s. 3d. or 30 cents.