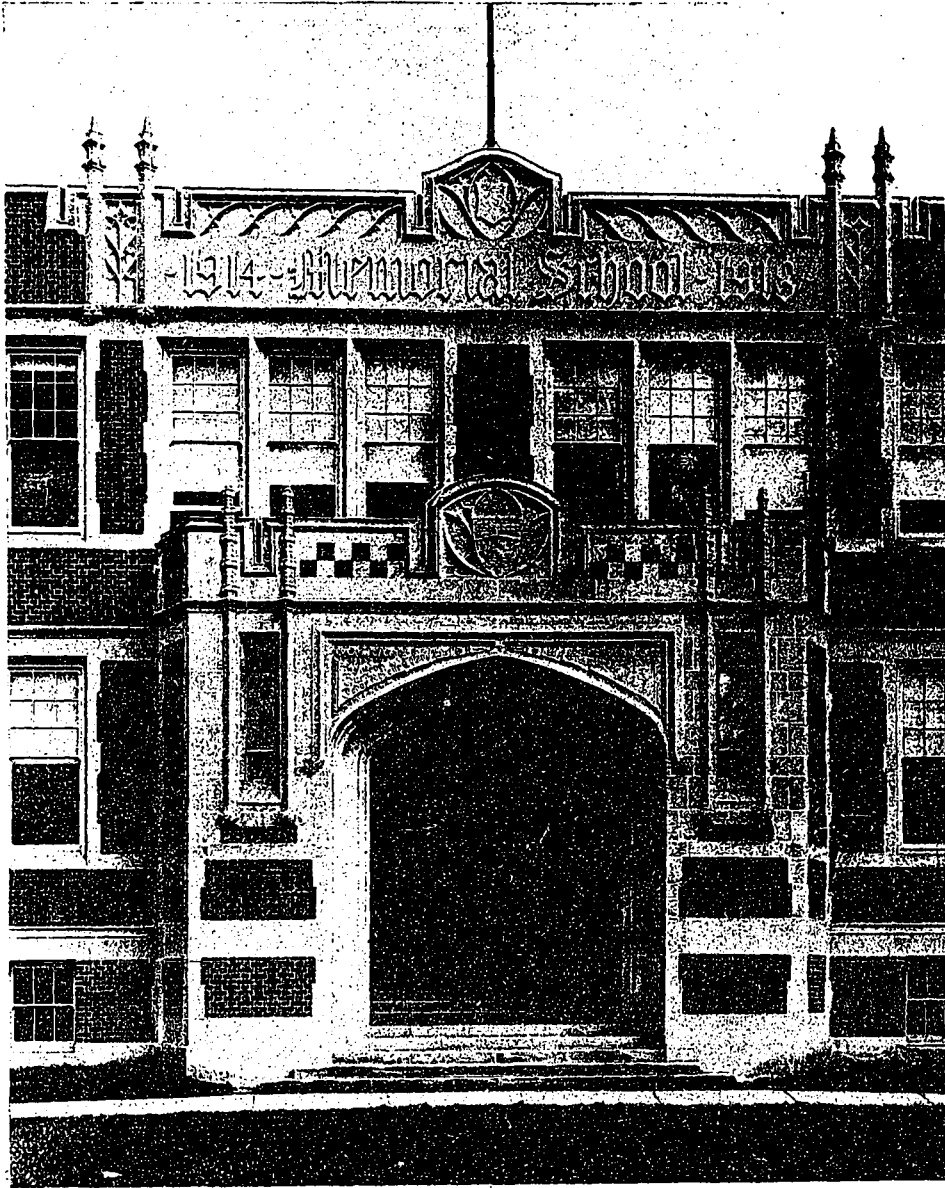


New Hamilton (Ont.) Schools

TWO new educational buildings opened this season at Hamilton, one entirely completed and the other partly carried out, are unique in features of design. One is the new Memorial School, the first building of its kind

nates any beams in the ceiling. Its principal feature is a spacious central auditorium. Instead of following the usual plan of placing the rooms along a longitudinal axis, the class rooms are arranged around a large central quadrangle



DETAIL OF MAIN ENTRANCE; MEMORIAL SCHOOL, HAMILTON, ONT.

in Canada, or perhaps elsewhere, dedicated to this purpose, and noteworthy on account of its somewhat unusual plan; and the other the partly finished Technical School, which is distinctly industrial in architectural character, and which when eventually completed will be several times its present size.

The Memorial School is practically of reinforced concrete construction throughout, the design being carried out so as to give the class rooms a continuous overhead span which elimi-

nates any beams in the ceiling. Its principal feature is a spacious central auditorium. Instead of following the usual plan of placing the rooms along a longitudinal axis, the class rooms are arranged around a large central quadrangle

which is used for auditorium and gymnasium purposes. This entire inner square is taken up by the auditorium and the corridors which surround it, the latter connecting with several entrances which give convenient access to the building and the various class rooms.

Externally the building is impressive both as to size and architectural character. The exterior walls are all terra cotta tile, faced with rug brick laid with a flush join in Flemish bond, and trimmed with carved stone detail. The