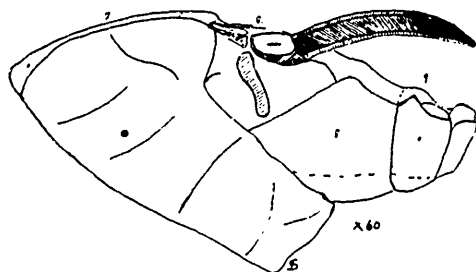


22.



23

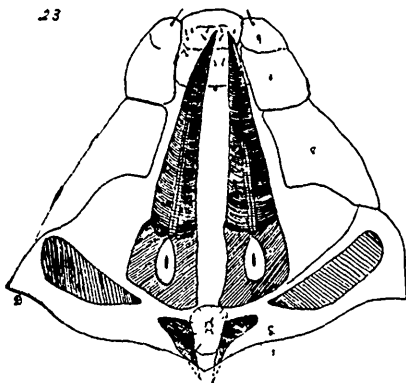


Fig. 17.—Longisection of stem and cocoon of *D. crassipes*.

- n., cavity made by abdominal appendages ; l., feeding cavity.
- " 18.—Exterior view of root, showing feeding spot (l) and scars of abdominal appendages (n).
- " 19.—Under side of cocoon when removed from stem ; l., opening ("Oeffnung in demselben").
- " 20.—Lateral aspect of an abdominal appendage ; l.c., lower canal ("der untere unpaare kanal").
- " 21.—Sketch of larva of *Donacia crassipes*, enlarged ; a., anus.
- " 22.—Lateral aspect caudal segments of larva of *D. crassipes*.
- " 23.—Dorsal aspect of same.