

CLEMATIS JACKMANNI.

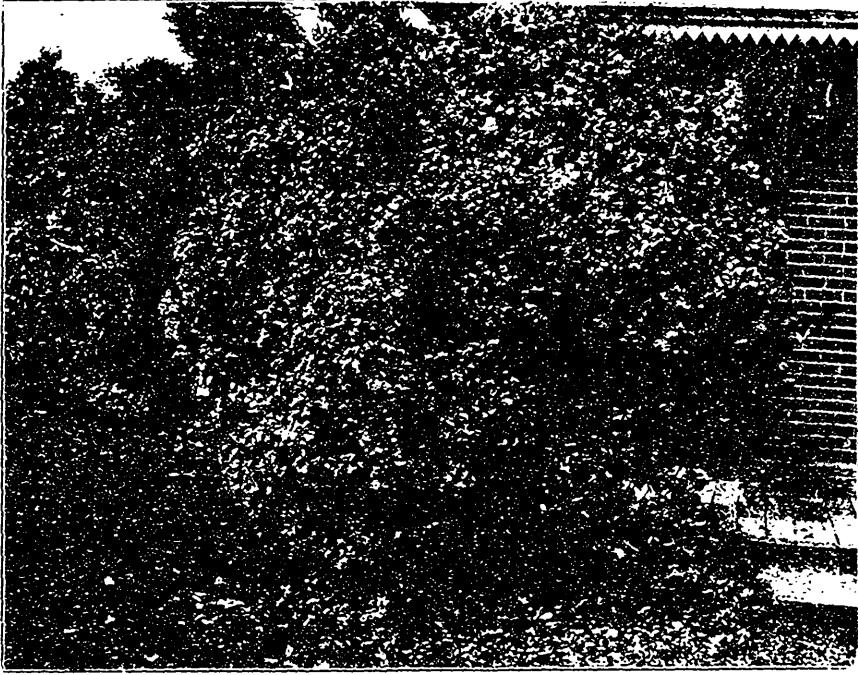


FIG. 1510.—CLEMATIS JACKMANNI, from photo sent by Miss Henman.

THE Jackman's Clematis shown in the accompanying engraving is about eight years old. It was spring planted in the spot it now occupies, and was only six inches high ; just one shoot and some healthy looking roots. I took great care of it, you may be sure, encouraging it to grow by tying the shoots to supports as soon as they needed it, and every winter covering up the earth surrounding the roots with leaves or straw, and laying boards on top to keep them there. In the spring I took this away and carefully laid on top of the soil, or mixed in with it some well rotted manure and watered all summer the same as I did my flower

beds. It has amply repaid me for the care, and this year the leaves were scarcely visible for flowers, some years the flowers remain for six weeks and there are a few old ones right into October. At first I took it off the trellis work and laid it down along the veranda covering it up same as roots, this I have learnt by experience is quite unnecessary. All that needs doing is to cut away with a sharp knife the part that is dead in the spring, but do not be in too great a hurry to do this, wait till you see what sunshine and warmth will do, the runners look dead when they are not.

HELEN HENMAN,
Sec. Thornbury Hort. Soc'y.