

# Farm, Orchard and Country Life

## SHOW ANIMALS NEED ATTENTION

Hogs Should Be Prepared Months Before Exhibition Time.

States Forcing at the Last Moment Won't Bring Results.

BY W. G. DINSMORE.

The fitting and showing of swine is an art in itself quite apart from that of breeding. The careful breeder who prides himself on the breeding and typiness of his hogs need not necessarily be unbeatable in the show ring. In large show classes where

the competition is keen the winning individuals must possess other qualifications than true type alone, and probably one of the most important considerations other than type is what may be called the condition. The show condition is found in its greatest perfection at our larger shows where breeders with years of experience at their backs are in keen competition with one another. For those breeders who are less experienced and who may wish to take a hand in the game a few suggestions at this time may not be amiss. Animals which it is the intention of the owner to exhibit at this fall's shows should be selected at once. This is important if maximum size and development is to be obtained, and every day that is delayed means that much more of a handicap for the animal in the show ring.

Forcing Spoils Quality.

It is impossible to realize the desired results by forcing at the last moment. It is necessary, in order to obtain full development to bring the animal along gradually. Forced feeding results in excess fleshing, with retarded development of frame, or on the other hand it may result in grossness and lack of quality.

Pasture, supplied with shade from the sun, and also, if available, running water, provide ideal conditions for the hog during the summer. These, combined with a well-balanced meal ration fed in conjunction with green feed and skim milk, form a combination that is capable of giving the most favorable results.

The meal ration which is selected for this purpose should be one calculated to develop bone and muscle during the initial stages of the fitting period, and for the latter stages a somewhat higher percentage of fat-producing foods should be supplied.

Protect Hog's Skin.

In order to appear to the greatest advantage the skin of the hog must be free from blemishes or roughness of any kind, and present a clean, healthy appearance. One great source of trouble, more particularly with white-skinned hogs, is that of sunburn. This can largely be prevented if some protection from the sun, either natural or artificial, is available where the hog may take shelter throughout the hotter parts of the day. These precautions are not sufficient, however, if the skin of the hog is to appear to the best advantage, so washing must be resorted to. It is not sufficient to let the washing go until the day before showing. Some considerable time before the hog is to be shown, at intervals of a few days, a thorough scrubbing with a soft-bristled brush, linsed soap, and clean water are advised in order to clean the dirt out of the pores. Cleanse with clear water, and care-

## BEES REQUIRE CARE IN SPRING

Indoor Wintered Colonies Should Not Be Placed Outside Too Early.

Windbreak Desirable for Protection in Cold, Backward Seasons.

The main object of spring manipulation is to produce as large a force of bees as possible for the harvest. To secure this force it is essential that the colonies be strong, that the queen be young and prolific and that she have sufficient room for maximum egg production, also that the bees have an abundance of available stores properly placed within the hive. It is the work of the beekeeper to provide these conditions during the spring.

Bees that have wintered in a cellar should not be placed outside until the first nectar-secreting flowers are opened. Colonies showing signs of restlessness, colonies having less than ten or fifteen pounds of stores can be helped from those having a surplus or be given a thick sugar syrup, or better still, combs of honey saved from last year's crop. All weak and

queenless colonies having failing queens should be united. Unite the weak to colonies of medium strength or weak queenright colonies to strong queenright colonies. If the hives are badly spotted with dysentery and contain many dead bees, they can be cleaned out somewhat, but it is advisable to make this first examination brief unless the weather is exceptionally warm.

Be sure there are plenty of stores in the hives at all times and that the queen has sufficient room for brood-rearing, and empty combs as rapidly as the colonies become strong enough to require them. Water is essential for brood rearing in the spring. If no water is near the apiary a watering place should be provided in some sheltered place where it is easily accessible to the bees.

Encourage Production. Do not attempt to equalize brood until the colonies are in such a condition to take care of it. Spreading brood should be avoided, as it may result in chilled brood which does more harm to the colony than if it were left alone.

Bees wintered outside should not be removed from the cases until they are working well in the first super. The extra protection during the early spring encourages maximum brood production.

As the spring advances the brood chamber should be enlarged to provide sufficient room for brood-rearing and stores. This can be done either by raising brood from the lower chamber into a super or by giving a second chamber without a queen excluder.

To reduce drifting, the bees should be brought out during the evening or on a dull day, when there is little chance of flight. The entrances should also be reduced to about one inch; this will help to conserve heat and help to prevent robbing.

Need Some Protection. Where the spring is likely to be cold and backward the bees should be given some protection when first placed outside. A windbreak should also be provided to protect them from the prevailing winds.

On the first warm day when the bees are flying freely, every colony should be examined for stores and queens. Colonies having less than ten or fifteen pounds of stores can be helped from those having a surplus or be given a thick sugar syrup, or better still, combs of honey saved from last year's crop. All weak and

fully remove all soap. Such treatment results in the freshness and bloom that is so attractive and desirable in show hogs.

Frequent handling of the hogs is necessary, in order to have them accustomed to the presence and also submit to the will of their attendant without undue disturbance.

## PLAN TO EXTEND HYDRO IN KENT

Farmers Residing On 10th Concession Make Application For Power.

May Erect Summer Amusement Park On Point Pelee.

Special to London Advertiser. CHATHAM, June 2.—Another rural hydro line will be erected in Kent County in the near future. Farmers residing on the 10th concession in Raleigh Township have made an application to the local hydro system for an extension along the above concession road. This will be done when the extensions to Fletcher and Merlin have been completed.

Rumors have reached this city to the effect that an American syndicate is in negotiation with the Canadian government for a long lease on a portion of land on Point Pelee, on which it is proposed to build a big summer amusement park.

For some time Americans have been using this Canadian pleasure ground for their outings, and scores of American tourists have been making the place a Mecca for week-end visits.

Local examiners and school inspectors are busy preparing for record classes for the mid-summer high school entrance examinations, as owing to the recent changes in the regulations governing the lower school examinations, the number of candidates writing will be nearly double that of former years. Seating accommodation will tax the resources of the officials in charge of the examinations.

There will be less building in the city this year than in previous years, according to the building report for May, which has just been issued by Five Chief. Permits issued last month only totalled \$18,870, and the total so far this year is only \$97,580.

The Hebrew Shabbath, known better as the feast of weeks, commences today and is being observed by the Jewish colony of the city following the ancient ceremonial as originally observed in the temple at Jerusalem.

Some Jews from Detroit and other places who have been visiting in the city are stated to have come here for the ceremonies. A rabbi from Detroit is to be in charge of the ceremonies.

GRAND TRUNK RAILWAY SYSTEM. Special Sleeper For Men Only Toronto—Montreal.

Train leaving Detroit 2:30 a.m. (Central Time), daily, Windsor 4:19 p.m. (Eastern Time), London 7 p.m., Hamilton 9:10 p.m., Toronto 11 p.m., arriving Montreal 7:30 a.m. Returning, leave Montreal 11 p.m., daily, offering travelers an exceptionally fine through sleeper car service, without change; Compartment Club cars between Toronto and Montreal.

A special feature of this service, commencing June 4, is sleeping cars (with wash-room at both ends), between Toronto and Montreal, reserved for men only.

Tickets and reservations at city ticket office, corner of Richmond and Dundas streets, Phone 80, or depot ticket agent, Phone 6280.

SEVERELY HURT IN FALL FROM DRAY Special to London Advertiser. SARNIA, June 2.—Harry Bramley, 169 Samuel street, met with serious injuries this morning when he was thrown from a loaded dray of the McGibbon Lumber Company, which collided with the sidewalk on Christina street as the team took fright at a passing street car.

He was conveyed to the hospital in an ambulance, where it was necessary to put eight stitches in the scalp wounds.

FILE BANKRUPTCY PETITION. NEW YORK, June 2.—An involuntary petition in bankruptcy was filed in federal court today against Stillwell, Laffer and Lowe, stockbrokers and members of the New York Consolidated Stock Exchange. Liabilities were listed at \$200,000 and assets at \$50,000.

## Oak Floors Are Best

BECAUSE—OAK Flooring, by right of superior merit and conquest, is "Canada's Best Flooring."

ALL hardwood floors usually used in homes are Oak Floors. KEEPS good company. Wherever Oak Floors are used you will find quality and character throughout.

FLOORS for a home should be beautiful and durable. Oak Flooring combines these very essential qualities.

LADIES prefer Oak Flooring for the reason it is rich and cheerful in color, and offers unlimited possibilities to give the home that coveted touch of elegance.

OAK Flooring is Distinctive, Beautiful and Substantial, three very vital reasons why so much Oak Flooring is in use today.

OWNERS always demand Oak Flooring, as they consider it a good investment. It attracts and satisfies buyers or tenants.

RUGS and Oak Floors are the source of unlimited satisfaction and pride. They are sanitary and modern.

SERVICE and satisfaction are assured if Oak Floors are used. We carry a good stock of plain and quarter-cut Oak Flooring, and will be pleased to give you any information. Let us figure on your requirements.

**Dymont-Baker Lumber Co.** Phone 1370. Corner Bathurst and Wellington.

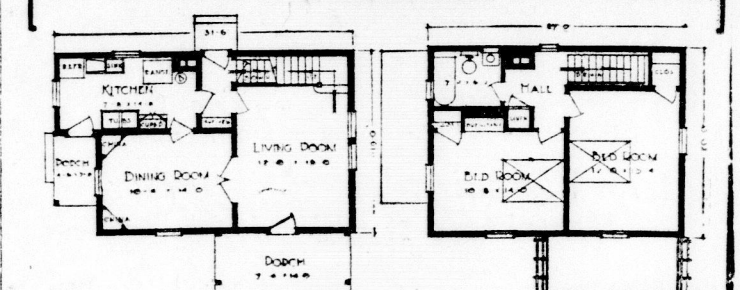
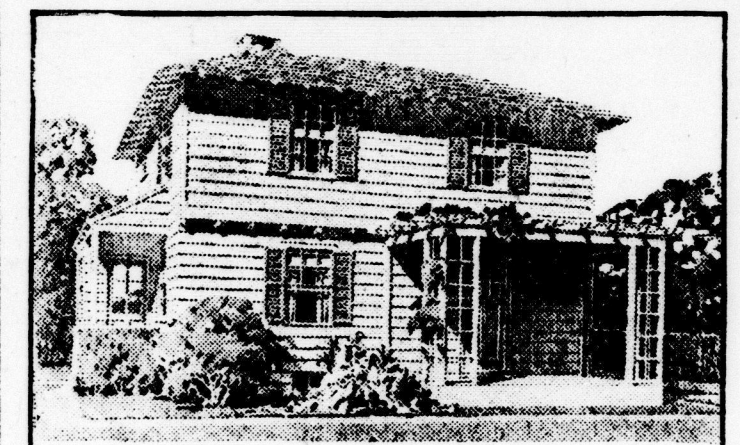
**You Can Save \$500.00** or over on your new residence, avoid repainting later, save half your coal bills. Consult me now.

**TEN-TEST** TRADE MARK SOLID FIBRE BOARD Also Seaman-Kent Co's Perfect Hardwood Floors direct from mill.

**J.S. Ferguson** Phone 390F. 481 RICHMOND STREET.

## BUILD A CITY HOME THIS YEAR

A Chic House That Will Sell



You can't create a beautiful home with an ugly house as a starting point. That doesn't mean you must have a large or elaborate house. It means a well-designed house, the right size for your particular family's needs, be it three rooms or twelve. Too large a house is in as bad taste as too small a house, for it represents needless waste of space, labor, time, material, and cost of construction and upkeep.

The house pictured here is an admirable one in many ways. To begin with it is well designed. It will not go out of style and become unsalable in a few years.

It has only five rooms and they are arranged on two floors so that a minimum of ground space is taken up. The outlines of the house form a simple rectangle 31 feet 6 inches wide and 19 feet deep. The hip roof with its wide eaves and open cornice is a popular type. The use of shutters and small-paned windows shows excellent judgment in securing a good exterior, and the overhang of the second story with its small supporting brackets is another good touch.

Tradition has it, you know, that the original colonist planned their houses with an overhang so as to shoot directly down at Indians knocking at the front door with their tomahawks. In these less troublous times it is used for its decorative, rather than its defensive possibilities. Care in handling details of design is also evident in the attractive chimney, and the enticing porch with latticed posts, and exposed rafters in pergola effect.

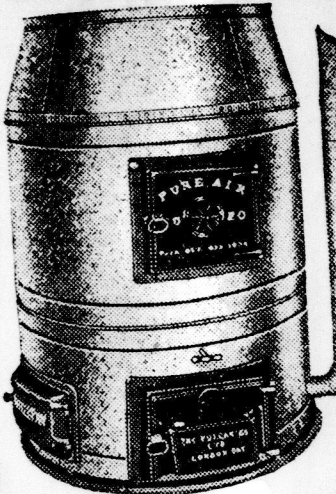
The living-room occupies the right half of the first floor, with the open stair along the rear wall, opposite the front entrance. There are two generous windows on the long outside wall, and the entrance door also furnishes light for this pleasant room. French doors separate it from the dining-room. Cheerfulness, so essential to the enjoyment of meals, is assured by windows on two other sides. A pair of corner china closets make good use of otherwise waste space, and give the dining-room a pleasing shape.

A front door to the kitchen—that's a happy thought, isn't it? The picture shows this door, in the ell made by the kitchen projecting beyond the rest of the house.

This feature makes this house a good one for the lot that is hard to reach from the rear. The long, narrow shape of the kitchen permits of unusual efficiency in the arrangement of the fixtures—sink and drain-board, range, dresser and refrigerator. There's space for a wall-cabinet breakfast or work table, too.

Many steps will be saved by a direct access from kitchen to living-room, near the stairs, which has the advantages of a rear stair, without its extra cost. The rear entry, which provides refrigerator space, delivery shelves, and handy access to the basement, is part of the rectangle of the floor plan.

Instead of being divided into several cramped rooms, the second story has only two large bedrooms, with excellent closets. There is more than the usual amount of wall space, so that the woman of the house may change the furniture about to suit her fancy. There will still be good light, and cross ventilation. In one of the bedrooms, a built-in dressing table with adjustable side mirrors is a delightful idea. A little bench of just the proper size is made to go with this bit of permanent furniture.



ESTABLISHED 1906

## VULCAN PURE AIR FURNACE

Perfect Combustion Proper Ventilation Ease of Operation Fuel Economizer

Manufactured by

## The Vulcan Co. Limited

Founders and Machinists 84-94 Fullarton St. LONDON Canada



CONTENTMENT DWELLS in homes where high-grade Porcelain Enamel Ware is installed. We can advise you on any plumbing necessity.

**J. R. HASLETT** 521 RICHMOND STREET.

## Now Built in Canada

Delco-Light Success Makes Canadian Factory Necessary

So successfully has Delco-Light (the modern electric light and power system) brought city conveniences and comforts to Canadian farm and country homes, that a big Canadian factory is necessary to meet the demand.

Each year sees new thousands of farms made brighter and safer and more profitable through Delco-Light. Today Delco-Light has over 160,000 satisfied users.

From the Delco-Light division of the General Motors Corporation factories at Oshawa, Ont., are coming the best and most efficient

Delco-Light plants ever built. They are economical of fuel, need little attention, serve dependably all the year round. They light the farm or country home and outbuildings, supply power to pump water and do a dozen other chores around the place. They pay for themselves in time and money saved.

Delco-Light is made in 25 styles and sizes. No matter how big or small your requirements, there is a size to fit your needs exactly. Write your nearest distributor or direct to us for interesting Delco-Light literature.

Delco-Light Co. of Canada, Limited, Oshawa, Ont.

Electrical Systems Limited

Toronto

# DELCO-LIGHT

25 Styles and Sizes a size for every need

## The Geo. N. Kernohan Lumber Co., Ltd.

CORNER YORK AND RIDOUT STS. LONDON, ONT.

All kinds of ROUGH AND DRESSED LUMBER, BEAVER BOARD AND ASPHALT SHINGLES

Phone 626.

## Expert Wiring Cheaply Done

WHEN we stand ready to wire your home at such small cost there is no reason why your family should not enjoy the comforts and pleasures of electricity. Give us a call and we'll be pleased to make an estimate without obligation to you.

The Newest in LIGHTING FIXTURES. **J. H. POLLOCK** Electrical Contracting and Appliances. 397 Clarence Street, London, Phone 5782.

## F. B. Smith & Co.

All kinds of Furnace and Sheet Metal Work

172 MAPLE STREET

LONDON - - - ONTARIO

## STREET RAILWAY DEFICIT REDUCED

Committee At St. Thomas Expresses Satisfaction With New Schedule.

ST. THOMAS, June 2.—Although the report tendered the street railway committee Friday night for the period from April 26 to May 25 shows a decrease of 5,353 in the number of passengers carried over the same dates last year, the deficit was reduced from \$2,132.79 to \$244.27, and great satisfaction was expressed by members at the success of the new schedule.

A committee consisting of Chairman Robert Middleton, City Engineer W. Miller, Alds. J. L. Burger and J. Jagoe was appointed to look into the operation of motor buses in nearby cities. It was thought that the buses provide the solution for the street railway problem.

Hereafter Manager Charles Johns will act as secretary for the committee, and have the minutes extended by his staff. Chairman Middleton said that the city engineer was overloaded with work, and should not be asked to look after the clerical work for the committee. He thought that the city clerk should take care of the minutes, but said that on account of acting as city solicitor as well, he could hardly be asked to accept added duties.

To prevent delay caused by the motormen throwing the semaphore at the L. & P. S. crossing at Elm street, a watchman will be employed on Sunday and other days when the traffic is heavy, it was decided.

REPORT NEW INCORPORATION. OTTAWA, June 2.—Incorporations under the companies act this week include the Nelson-Bood Trap Company of Canada, with a capitalization of \$50,000.

## Automobile Hikers From Stratford Receive Warm Welcome At Goderich

Special to London Advertiser. STRATFORD, June 2.—"Welcome to Goderich—the town is yours." These words were on the banner which welcomed the motor hikers from Stratford and intermediate centres, who made Goderich the objective today. The event was what is hoped to be an annual hike. It was staged by the chamber of commerce. Upwards of 25 cars formed the nucleus of what materialized into a healthy caravan with people from Listowel, Mitchell, Seaford and Clinton.

The party reached Goderich shortly after noon, and following lunch, served in the park, there were addresses by Hon. F. C. Biggs, Hon. F. W. Hay, Hon. Peter Smith and others. An official welcome was tendered the visitors by the Goderich authorities.

Hon. Mr. Biggs defended the government road policy. Some people considered it extravagant, he said, but reminded the people that the roads were well constructed and would give years of service. Permanency of construction was their motto. Hon. F. W. Hay, Liberal leader in the Legislature, and Hon. Peter Smith, provincial treasurer, also spoke.

The hikers returned home during the afternoon and evening. have not been determined, but arrangements will be completed before the army arrives. It is probable that the men will be returned to their homes by train.

"General" McDonald is still in the city, and will remain until "General" Riley and his marchers conclude their pilgrimage.

OTTAWA, June 2.—(By Canadian Press).—E. C. McDonald, deposed "general" of the veteran "army" marching on the capital, had a long interview this afternoon with Herbert Marler, chairman of the special parliamentary committee of soldiers' civil re-establishment. While it is understood Mr. McDonald did not place concrete proposals for re-establishment before Mr. Marler he did make a general plea for the returned men.

Mr. Marler and members of the committee will probably interview the leading members of the army when it reaches here. Just what proposals the men will make have not yet been ascertained, but it is understood their grievances will be fully investigated. Steps for the disposal of the army after it has accomplished its mission

## AUTO CLUB HOLDS MEMBERSHIP DRIVE

St. Thomas Organization Conducts Campaign To Secure Added Strength.

Special to London Advertiser. ST. THOMAS, June 2.—A vigorous membership drive is being waged by St. Thomas for a recently instituted branch of the Automobile Legal Association, the purpose of which is to provide legal assistance for members who become involved in lawsuits or face speeding charges. Local organization is in the hands of J. E. M. Colson of London, who will have charge of the St. Thomas branch, and will have associated with him E. Sherman Robinson of this city.

All legal expenses of members will be borne by the association. Barristers Cameron, Grant and Cameron have been appointed as local solicitors. Mr. Colson says that the association has been very successful in the defence of speeding cases, and claims that 18 out of 23 cases of this nature were dismissed in Toronto last week.

Although the association has no connection with the Ontario Motor League, there are 22,000 members in Canada, and in the United States association 70,000.

**WILL HOLD 50TH ANNIVERSARY**

INGERSOLL, June 2.—In connection with the opening of St. Paul's Presbyterian Church on Sunday, June 11, services appropriate to the fiftieth anniversary will be held.

The special speaker for the day will be Rev. Dr. Deacon of Avenue Road Presbyterian Church, Toronto, formerly of Leithridge, and who served overseas as a chaplain. The church is being thoroughly renovated.