

Seals Numerous Outside

VESSELS PREPARING FOR HUNT.

Yesterday afternoon Cabot Tower reported seeing numerous seals between Cuckold's Cove and Small Point. The tug "Hugh D." with a sealing party on board, made an attempt to get outside during the afternoon, but the ice was found impenetrable and she was forced to return. Men from the battery will go out the first favourable opportunity while it is said two small vessels are now being fitted out for the hunt. Yesterday a resident of Portugal Cove came to town with a seal carcass which was quickly disposed of. He reports that 150 seals were taken at the Cove on the previous day and about the same number on Bell Island. Seamen along the shore are expected to do well with seals this season.

M. C. L. I. Debate

VERDICT FOR NEGATIVE.

The subject for debate at last evening's meeting of the M. C. L. I. was: Resolved: "That a University education is not conducive to the success of the pupil in life's career." The speakers for Affirmative were T. Soper, A. Hayward and W. White. For the Negative R. F. Horwood, Dr. T. A. Jones, and John S. Woods.

The Affirmative described the University as a college, a group of colleges teaching theology, medicine, law, the science and the arts. They argued that education involved general training, formation of character and cultivation of the human faculties. All were agreed that for those who had a definite professional objective a University education was essential, but for those who seek a general training it often proves to be a drawback. From the standpoint of the parent who considers sending his children to a University the result judged by the large number that have returned does not warrant a repetition of the expense. A number of our Rhodes scholars have failed to measure up to expectation and the general effect on the students seems to be to fit them for Canada, or the United States, and to make them dissatisfied with their own country. In other words if they are educated in Canada they become Canadians, or if in the United States they become American citizens. It was also urged that the opportunities for University training of men and women are limited in Newfoundland and consequently the students have in many cases to remain away in order to earn their living; and that University men and women do not always reach the highest standards in social, commercial, or political life.

The Negative side quoted from eminent authorities, such as Cardinal Gibbons, the late President Wilson, etc., proving that the University stands for liberal culture, and general training as well as specific training. That the University produces the best men and women in social, commercial, political and professional life. Any trained man will pass the untrained man in the development of life's career. That a man should know a little of everything before he can make the most of his opportunities, and even if Newfoundland lost some of her best citizens because of their University training, other lands benefited thereby.

Many members also spoke from the floor and considerable information was added to the debate. On the vote being taken it was found the Negative side won by a majority of three.

Among the visitors present were Dr. V. P. Burke, Deputy Minister of Education who, with Dr. Butt, addressed the meeting at the close.

Weather and

Ice Conditions

The following weather and ice reports were received by the Postal Telegraphs this morning:

Bona Vista—Strong northerly winds. Too thick to see far.

Catalina—Winds south, foggy. Water seen over ice yesterday; supposedly three miles off.

Wesleyville—Ice tight, thick fog. Greenspond—Wind east, strong breeze; thick fog.

Nipper's Harbor—Moderate S. E. wind, rain; ice conditions unchanged; no seals.

Tilt Cove—Fresh easterly wind with fog; ice tight, no seals.

La Selve—Strong easterly wind with rain, lots of old seals seen yesterday at Cape John. Sogons passed here late yesterday evening in White Bay.

Conche—N. E. wind, cloudy, ice tight, seals scarce. A sealing steamer passed north late yesterday evening.

Seal Cove—Wind N. E. with rain; Bay still jammed, no seals.

Westport—Wind E.N.E. with snow; ice conditions unchanged.

Hampden—Wind N. E., strong, snowing.

St. Anthony—Strong breeze E.N.E. wind with snow; nothing new to report.

Griguet—Strong gale from E. N. E. with snow. Too stormy to see far.

AT ST. THOMAS'S.—At the Lenten Service at St. Thomas's this evening, at 7.30, the preacher will be the Rev. E. B. Elliott.

Our Efforts to Supply Special Values Every Friday and Saturday

Are amply repaid by the wonderful appreciation shown by customers—old and new. New Goods are crowding into the different departments, some of which are offered during this Week-End Sale at specially reduced prices.



New Dresses At Sale Prices

Serge Dresses.
Round neck, short sleeves and long sleeves; in colors of Brown, Navy and Black; trimmed with fancy braid and finished with belt and pretty buckles; assorted sizes. Reg. \$5.25 each for **\$4.75**

Gaberdine Dresses.
Colors of Light Fawn, Brown, Navy, Sage, Light and Dark Grey; round neck, long sleeves, neatly trimmed with fancy braid, belt and pretty buckles; assorted sizes. Reg. \$9.50 ea. for **\$8.75**

Dressing Gowns.

Made from special quality figured Flette, in assorted Jap designs, straight line, without belt, collar and lap sleeves, edged with satin. Reg. \$3.00 each for **\$2.55**

Skirts.

7 only Skirts, in plain grounds of Navy and Fawn, also Tweed effects, with Roman stripes, in assorted, pretty shades. Regular \$7.50 each for **\$5.40**

New Showroom Arrivals Lower Priced Beautiful Smocks

Good taste in a garment can't be described, but it can be felt, nevertheless, by every one who sees it. These new Smocks have that indefinable something about them which makes them alluring to every woman who sees them.

Crepe Smocks.
Made from "King Tut" Crepe in pretty Egyptian designs, round neck, half sleeves, piped with pretty plain shades. Reg. \$4.50 for **\$4.05**

Tricotee Smocks.
Colors of Rose, Grey, Flesh, White and Black; round neck, half sleeves, cord running through waist. Reg. \$3.85 each for **\$3.30**

Muslin Smocks.
Very dainty Smocks; colors of Tan and White; long sleeves, Peter Pan collar and turned back cuffs. Reg. \$2.50 each for **\$1.75**

Shirtwaists.
Made of natural Shantung, long sleeves, two way collar; very serviceable. Reg. \$7.00 each for **\$6.00**



Jersey Pants.

Colors of White and Pink, fine Jersey knit with elastic at waist and knee; sizes 6, 7, 8 and 9. Reg. 35c. pair for **35c.**

Women's Corsets.

D & A Corsets, sports models, medium bust, suitable for average figures; sizes 20 to 30; made from good quality Corset in Pink and White; well boned. Reg. \$2.40 pair for **\$2.22**

Wool Jackettes.

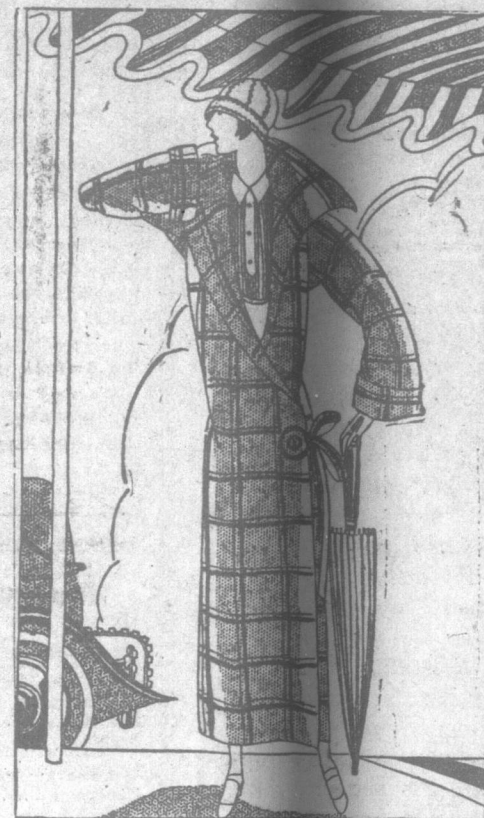
All Wool Jackettes, buttoned at side, Tuxedo collar; colors of Grey, Rose, Sand and Sage. Reg. \$4.00 each for **\$3.68**

New Ribbon.

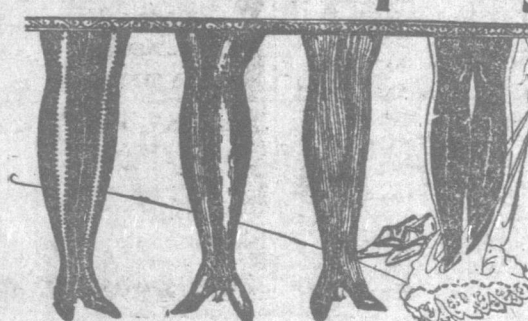
Silk and Merve, 6 inches wide; in assorted fancy striped and floral effects. Reg. 75c. per yard for **65c.**

Silk Fringe Tassels.

21 inches long, in assorted plain shaded colors. Reg. 95c. each for **82c.**



The New Spring Hosiery



Mercerised Hose.
These are exceptionally good looking, and come in colors of Fawn, Mole, Champagne, light and dark Grey; assorted ribs, seamless fashioned, leg, spliced feet, elastic tops; sizes 9 to 10. Reg. \$1.00 pair for **83c.**

Cashmere Hose.
Women's All Wool Cashmere Hose, plain and assorted ribs, full fashioned, with fortifier treble spliced foot, earlier tops; sizes 9 to 10. Reg. \$1.25 pair for **\$1.07**

Ribbed Hose.
Cashmere Hose, shades of Fawn, Light and Dark Grey and Mole; 4-1 rib, seamless leg, double heels and toes; assorted sizes. Reg. \$1.10 pair for **\$1.10**

Silk and Wool Hose.

Women's Art Silk and Wool Hose; colors of Coasting, Light Grey and Nigger; full fashioned seamless leg, suspender tops, spliced feet and toes; sizes 9 to 10. Reg. \$1.50 pair for **\$1.26**

Cashmere Sport Hose.
Sizes 9 to 10, assorted Grey mixtures, full fashioned leg, seamless, spliced heels and toes, wide suspender tops; neatly embroidered in large checks. Reg. \$1.55 pair for **\$1.58**

Cashmere Hose.
Seamless fashioned leg, spliced heels and toes, garter tops, in Grey and Navy. These are wonderful value; sizes 9 and 9½. Reg. 45c. per pair for **38c.**

New Spring Dress Goods

Figured Voile.

A splendid assortment of Figured Voiles, showing the very newest in color and pattern; 38 inches wide. Reg. 39c. 45c. per yard for **39c.**

Fancy Voile.

Another of the Spring's newest arrivals, beautiful shades and color combinations, in all designs; 38 inches wide. Reg. 60c. per yard for **54c.**

Plain Voile.

38 inches wide; shades of Pink, Sky, Sage and White. Reg. 55c. per yard for **48c.**

Basket Cloth.

All Wool Basket Cloth, suitable for Sports Coats; colors of Sage, Brown, Fawn and Rose. Reg. \$2.00 per yard for **\$1.75**

Crepe de Chene.

Silk Crepe de Chene, shades of Fawn, Navy; 40 inches wide. Regular \$3.75 per yard for **\$3.25**

Ratine.

Plain shades of Helio, Sage, Jade, Fawn, Grey, Pink, Cream and White; 38 inches wide. Reg. 75c. yard for **70c.**

The New Spring Gloves



In the Glove section, you will find the Gloves that fashion has spoken plainly of, as the leading styles for Spring wear. Gauntlets seem to take the leading place in Glove fashions; we are now showing some special lines, specially reduced for Friday and Saturday.

Women's Fabric Gauntlets.
Suede finish, strap wrist, shades of Grey, Beaver and Fawn; assorted sizes. Reg. \$1.20 pair for **\$1.08**

Women's Gauntlets.
Imitation Suede, in shades of Light and Dark Grey, wrist strap; all sizes. These are novelty sewn in Black and White, giving a very dressy appearance. Regular \$2.40 pair for **\$2.16**

Women's Fabric Gloves.
New arrivals, colors of Fawn, Beaver, Grey and White; 2 domes. Regular \$1.20 pair for **\$1.08**

Men's Kid Gloves.
Imitation Tan Kid Gloves; all sizes; dome fastened; ideal for Spring wear. Reg. \$2.00 pair for **\$2.75**

Women's Gloves.
Fabric Gloves, shades of Chamolise and grey; 2 domes; suede finish; all sizes. Reg. \$1.55 pair for **\$1.40**

Men's Gloves.
Tan, unlined kid, dome fastened; all sizes. Reg. \$2.10 pair for **\$1.75**

Unlined Kid Gloves.
Tan Cape Kid; all sizes, dome fastened. Reg. \$3.10 pair for **\$2.75**

Smallware Specials

Bias Tape.
Colors of Pink, Blue, Lavender, Black and White; extra wide. Reg. 30c. piece for **25c.**

HAIR PINS. Assorted kinds, 2 bundles for **3c.**

GREY SHOE LACES. Round, 27 inches long. Reg. 4c. pair for **3c.**

MENDING WOOL. On Cards; all colors. Special 2 cards for **7c.**

TOILET SOAP. Medium size cakes. Special 2 cakes for **13c.**

SILK ELASTIC. Black and White; ¼ inch Reg. 15c. per yard for **16c.**

SULTAN HAT DYE. All colors. Reg. 25c. per bottle for **20c.**

CROWN TALCUM POWDER. Large tins, in White only. Reg. 55c. per tin for **48c.**

CROWN VANISHING CREAM. Medium size jar. Reg. 65c. per jar for **58c.**

CROWN COMPLEXION POWDER. COMPACTS. Colors of Rachel, Blanche and Rouge. Reg. 55c. per tin for **48c.**

Household

Lace Curtains.
2½ yard long, made from extra strong net, in several pretty designs. Reg. \$1.85 pair for **\$1.65**

White Huck Towels.
Made from fine H u c k Toweling, with wide hem-stitched border; size 18 x 36. Reg. 60c. each for **45c.**

Bolster Cases.
Made from very fine White Cotton; size 20 x 60; linen finish, very neatly embroidered; exceptionally good looking. Reg. \$1.45 each for **\$1.25**



Needs at Special Prices

Chintz Remnants.
We have a splendid selection of Chintz Remnants, 36 inches wide, ranging from 2 to 8 yards long. These have just arrived and are the greatest value we have had for years. Special per **32c.**

Chintz.
48 inches wide; English manufacture; a splendid selection to choose from, in the very newest designs and colorings. Reg. \$1.10 per yard for **95c.** Reg. \$2.00 per yard for **\$1.76**

New Spring Furnishings

All the aids to tasty dressing, all the aids to comfortable dressing, are to be found in our big Men's Furnishing Department. If you buy your needs here, we will guide you along stylish lines, such as good dressers demand, and at such a saving that will draw you as a needle to a magnet.

Men's Ties.
Silk Ties, in wide flowing ends, assorted colors and designs, latest ideas for Spring wear. Reg. 26c. 30c. each for **26c.**

Men's Silk Ties.
A wonderful selection of wide flowing ends, in this season's newest designs and colorings. You are sure to find exactly what you require in such an extensive stock. Reg. 45c. each for **42c.** Reg. 55c. each for **49c.**

Boys' Pants.
Made from good quality Tweed, American cut, loose leg, belt straps. To fit ages 5 to 10 years. Reg. \$2.50 pair for **\$2.30**

To fit ages 11 to 17 years. Regular \$2.50 pair for **\$2.25**

Boys' Suits.
American cut; assorted mixed Tweeds, belted with patch pockets, loose pants with belt straps; to fit ages 6 to 12 years. Regular \$9.90 pair for **\$9.00**



Tweed Caps.
Men's Tweed Caps, in a big variety of this season's newest patterns; all sizes. Reg. \$1.85 \$2.00 each for **\$1.85**

Wool Socks.
Pure wool, in extra fine knit; shades of Fawn, Tan, Grey and Black; and assorted Grey and Fawn mixtures; all sizes Reg. 95c. pair for **85c.**

Velour Hats.
Colors of Grey and Beaver; all sizes; in this season's newest shapes. Reg. \$6.75 each for **\$6.20**

Men's Felt Hats.
Soft Felt, in this season's newest styles, plain and bound brims; colors of Grey, Brown and Fawn; all sizes. Reg. \$3.50 each for **\$3.25**

Men's Shirts.
Negligee Shirts, plain grounds with assorted fancy stripes, double cuffs, stiff collar band, tunic style; sizes 14 to 17. Reg. \$1.80 each for **\$1.65**

Boys' Shirts.
Good quality Negligee Shirts, in sizes 12 to 14; soft double cuffs, stiff collar band; White grounds with assorted stripes. Reg. \$1.05 each for **\$1.05**

Stationery Specials

The Wrinkle Books.
10,000 hints on 1000 subjects, with 1000 illustrations by Archibald Williams. Reg. \$2.00 each for **\$1.70**

Every Boys' Book of Hobbies.
Containing wireless, model making, carpentry, collecting, scouting, home pets, photography, freetwork, bent from work, camping, caravanning and home museum. A book every boy should own. Reg. \$1.60 each for **\$1.35**

Thinking it Out.
By Archibald Williams. Regular \$1.65 each for **\$1.35**

Physical Culture.
With charts, by W. Bruce Sutherland. Reg. 78c. each for **60c.**

Ju-Jitsu.
The art of self-defence. Regular 65c. ea. **53c.**

Children's Wear

Child's Rompers.
Gingham Rompers, in Grey with Blue piping, Peter Pan collar, half sleeves and pockets; others with Pink and Blue checks, square neck and pockets; to fit ages 2 to 6 years. Reg. \$1.30 pair for **\$1.17**

Woven Pants.
To fit children from 6 to 12 years, in Pink only, elastic at waist and knee. Reg. 25c. pair for **21c.**

Child's Sandals.
Brown Calf, flexible soles, sizes 2 to 5. Reg. 65c. pair for **60c.**

Skuffer Boots.
For children and misses, heavy wide soles; sizes 6 to 2; made to withstand hard wear. Reg. \$2.15 pair for **\$1.95**

Child's Boots.
Button and laced styles, in Brown and Black; lift heel, natural shape; sizes 4 to 6. Reg. \$1.15 pair for **\$1.05**



Wool Door Mats

Red centre with Black and Red striped border; size 11 x 27; plain ends. **\$1.25** Reg. \$1.40 each for **\$1.25**

Tower's Fatal Lure.

Cathedral Campanile Closed Till It is Made Safe.

Westminster Cathedral tower is being closed till it can be made impossible for anyone to jump from the 250 feet high balcony.

This decision was announced at the inquest on Mrs. Margaret Davey, the Hammersmith mother who leapt from the balcony.

Finding that she committed suicide while of sound mind, after throwing her two children from the balcony, the jury added a rider that the tower should be closed until steps had been taken to prevent similar tragedies.

Monsignor Howlett, administrator of the cathedral, said the authorities had decided to construct a grill over the balcony.

This would make it impossible for anyone to jump over. The work would take about two months.

A tower, the coroner said possesses a fatal fascination for some people, who, though perfectly sane, against their own wishes become seized with a fatal obsession to throw themselves over.

When asked by the coroner if his married life was happy, the woman's husband replied: "My dear sir, you should have been in my house to see it. Happiness was not the word."

Fire Clay and Fire Brick

and

Fire Brick

in stock

H. J. Stabb & Co.

Jan 12, 1924



Goods Which You Can Depend On.

ELLIS & CO., Limited,

203 WATER STREET.

French Boneless Sardines.
French Sardines in Pure Oil
Skipper Sardines in Oil
Tuna Fish (Like Chicken).
Dry Shrimps.
Clam Chowder.
Little Neck Clams.
Barataria Prawns.
Cove Oysters.
Chicken Haddies.
Kipper Herring.
Hors D'Oeuvre.
(6 tins in Box).
Royals ala Bordelaise.
Anchovies in Oil.

Fresh Halibut.
Smoked Bloaters.
Fresh Smoked Haddies.
Fresh Smoked Kippers.
Fresh Smoked Salmon.

Sardine Paste.
Anchovy Paste.
Shrimp & Salmon Paste.
Bloater Paste.
No. 1 Salmon (1 and 2 lb. tins).
No. 1 Lobster (1 lb. tin).
No. 1 Mussels (1 lb. tin).
Shredded Cod Fish.
Boneless Cod Fish.

Have you a Suit or Overcoat to make? We make a specialty of making up customers own goods at prices that are absolutely the lowest for first class work. FARRELL THE TAILOR, 310 Water St.—Nov 17, 24

The Royal Stores, Ltd.