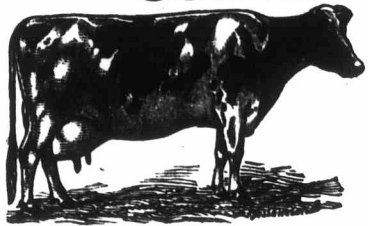


Holstein Cattle

500 HEAD ON HAND.



Largest and Choicest Herd in this Country.
Every Animal Selected by a Member
of the Firm in Person.

Over **THIRTY YEARLY RECORDS** made in this Herd average
14,212 lbs. 5 oz.; average age of cows, 4½ years.

In 1881 our entire herd of mature cows averaged 14,164 lbs. 15 oz. In
1882 our entire herd of eight three-year-olds averaged 12,388 lbs. 9 oz.
April 1, 1884, ten cows in this herd had made records from 10,000 to 15,000
lbs. each, averaging 15,608 lbs. 6 3-10 oz. For the year ending June, 1884,
five mature cows averaged 15,621 lbs. 1 2-5 oz.

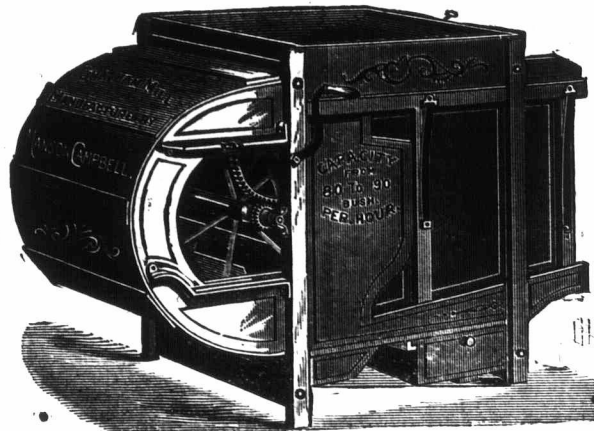
Seven heifers of the Netherland family, five of them 2 years old and two 3 years old, averaged 11,556 lbs. 1 2-5 oz.

BUTTER RECORDS.

Nine cows averaged 17 lbs. 5½ oz. per week. Eight heifers, 3 years old, averaged 13 lbs. 4½ oz. per week. Eleven
heifers, two years old and under, averaged 10 lbs. 3 oz. per week. The entire original imported Netherland family
of six cows (two being but three years old) averaged 17 lbs. 6 1-8 oz. per week.

SMITHS & POWELL, Lakeside Stock Farm, Syracuse, N. Y.

When writing always mention FARMER'S ADVOCATE.



THE CHATHAM FANNING MILL

Over 10,000 of these Mills
are now in use!

**FARMERS, BUY THE CAMPBELL AND HAVE
NO OTHER, IT CANNOT BE SURPASSED
IN AMERICA.**

More Improvements for 1885:

Increased capacity. Shoe being 25 inches wide
(inside measure) giving a capacity of from
30 to 90 bushels per hour.

A Screw Feed to raise and lower the Hopper
Slide with ease.

Shoe can be given six different shakes—fast
or slow, short or long—as desired.

Each Mill will be furnished with my Patent
Riddle for Extracting Cockle and Wild
Peas or Tare from grain. It will separate
as much Cockle as ever grows in wheat
with one running through the mill.

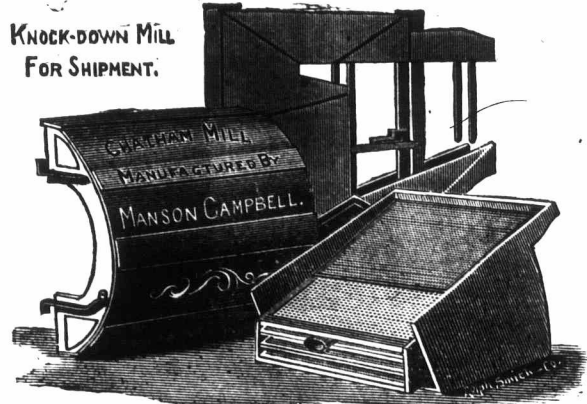
A first-class Gang Riddle and Grader goes
with each mill for separating oats from
wheat, which does a thoroughly first-class
job that any farmer or grain dealer will be
pleased with.

In addition to the Cockle Riddle and Gang
and Grader for separating oats from wheat,
each mill will have Screens and Riddles for
cleaning Chess and Whitecaps from wheat,
also to clean Oats, Barley, Peas, Beans,
Corn, Clover Seed, Timothy Seed, Flax,
and first-class for Chaffing.

Send for descriptive circular. Address
MANSON CAMPBELL, CHATHAM, ONT.

Mills sold wholesale in lots to suit
agents. AGENTS WANTED. 231-a

**KNOCK-DOWN MILL
FOR SHIPMENT.**



THE AYR AMERICAN PLOW CO. (LIMITED.)

DIRECTORS--JOHN WATSON, President; DAVID GOLDIE, Vice-President.
THE HON. JAMES YOUNG. JOHN D. MOORE, AND ALEXANDER BARRIE.

MANUFACTURERS OF

PLOWS, HARROWS AND CULTIVATORS

OUR BUFORD SULKY PLOW, improved, is lighter in draft than any Hand Plow cutting a similar
width of furrow. Any boy who can drive horses can handle it. It is made with steel or chilled mouldboards,
and in 12, 14, and 16-inch sizes.

OUR No. 23 PLOW, CHILLED JOINTER, has no equal for all the lighter soils.

OUR ADVANCE PLOW, STEEL JOINTER, is guaranteed to run steady in the hardest clay, and to clean
in any soil.

OUR SIDE HILL PLOW will save its cost every year on a hilly farm.

OUR WHIPPLE SPRING HARROW will do more and better work than two spring-tooth harrows,
old-fashioned field cultivators, or gang plows.

OUR BETTSCHEN CORN AND ROOT CULTIVATOR is the best. It is large enough to
run steady on the ground.

At the Provincial Exhibition held at Ottawa in September last, our No. 23 PLOW was awarded the
FIRST PRIZE.

At the Provincial Plowing Match, open to the Province, held near Woodstock in October last, our Sulky
Plows carried off all the prizes in that class; and our Jointer Plows, competing with ten different makes, carried
off all the prizes in their class except the fifth.

These First Prize Plows do not cost more than the price asked for inferior plows. Dealers find them the best
selling line of plows in Canada. Send for Circulars and Catalogues.

THE AYR AMERICAN PLOW CO. (Limited.)
YR, ONT., CANADA.

231-f

Stock Notes.

In our last issue we stated that the American
Jersey Cattle Club contemplated the abandon-
ment of their tests, basing our information on
reports in some of the leading agricultural
papers in the U. S. Mr. Valancey B. Fuller,
of Hamilton, Ont., the leading Jersey breeder
of Canada, writes to us as follows, contradict-
ing our statement, and we are pleased to pub-
lish his remarks: "In your last issue you re-
mark that the Jersey Cattle Club contemplate
the abandonment of the butter tests of the
Jersey cows. As I am one of the directors of
the American Jersey Cattle Club (being the
Club you doubtless refer to), I am in a position
to know whereof I speak. In place of aban-
doning the butter tests of the Jerseys, the Club
is encouraging them, and steps are being taken
to appoint an official tester, whose duty it will
be to supervise on behalf of the Club all official
butter tests."

THE FOLLOWING

FIRST-CLASS FARMS FOR SALE

A choice stock or grain farm of 112 acres, pleasantly
situate on the River Thames, in the Township of Blan-
shard, 1½ miles from St. Marys. Price, \$6,500.

Westminster Township—An excellent 76 acre farm;
about 70 acres improved; good orchard; soil, clay loam;
brick house, eight rooms, frame addition; two frame
barns, stables, shed, &c. School and churches one mile.
The above is a thoroughly good farm, in a pleasant situa-
tion, five miles from London. Price, \$5,700.

London Township—100 acres; the lot overruns, there
really being about 106 acres; 90 acres in cultivation, and
free from stumps; about 10 acres of bush, beech and
maple; two acres of good bearing orchard; soil, clay
loam; creek; farm well underdrained; brick dwelling
house, eight rooms and kitchen, cellar, &c.; two frame
barns, stables, cattle stables, sheds, &c. The above is in
every respect a first-class farm; 12 miles from London.
Price, \$8,500.

In the Township of Caradoc—100 acres, 85 cleared and
free from stumps, 15 acres fine maple sugar bush; good
young orchard; soil, clay loam, with about 10 acres sandy
loam; farm has good supply of water; brick dwelling
house, eight rooms, &c.; frame driving barn, implement
house and stable combined, 36x60; frame barn and shed,
100x34; cattle shed and stable, 50x30, all on brick or
stone foundation. School and church close. Strathroy
8 miles, London 16 miles. This has been the homestead
for a 300 acre farm, and is one of the best farms in the
township. Price, \$7,500.

Township of Enniskillen—100 acres, 45 acres cleared,
balance bush; soil, clay loam; small orchard; frame
dwelling house, six rooms, &c.; log barn and stable.
School one mile, churches, market and railway station
two miles. The above is offered a bargain. Price, \$3,000.
For further particulars, address

C. E. BRYDGES,
233-a LONDON, ONT.

FOR Fruit Packages

—AND— BASKETS

Of every description and of the best quality, send
to THE

OAKVILLE BASKET FACTORY!

Strawberry and Raspberry Baskets.
Cherry, Peach, Plum and Grape Baskets.
Clothes Baskets. Butcher's Baskets.
1, 2 and 3 Bushel Baskets.
Satchel and Market Baskets.
Gardeners' Plant Boxes.
Grocers' Butter Dishes, &c., &c., &c.

W. B. CHISHOLM, - Oakville.

231-d

Choice Strawberry Plants

232-c **\$3 PER THOUSAND.**
Address **THOS. STEPHENSON, Appleby, Ont.**