

Stop it
terrible
with its
amer-
ing what
to make
will find
a wanted
amount
is diffi-
a most
on with-

either of
bit of
y fer a
to the
or with

nless it
n you;
prevent
s; but
e neck
dissolve
it it
ot sine

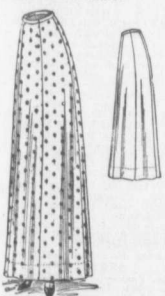
SPECIAL SPRING FASHIONS

Realizing the great interest that our readers take in the new spring styles, we shall give additional space to the pattern department of Farm and Dairy for this week. Look over the illustrations in the fashion department and send your orders early. If you do not see the style illustrated that you would like, advise us, and we will do our best to get it for you. Write all prices plainly, giving name and address, size and number of pattern desired. Address, Pattern Dept., Farm and Dairy, Peterboro, Ont.



OVER BLOUSE WITH BODY AND SLEEVES IN ONE, 6903

TO BE WORN OVER ANY GUMPE. Such a simple over blouse as this one will be greatly in demand throughout the entire season. It can be worn with or without a gump and is adapted to all seasonable materials. The blouse is made in two pieces that are joined at the back, consequently when striped material is used, it is easy to obtain the chevron effect. The cuffs are joined to the lower edge of the sleeves and the collar finishes the neck edge. The quantity of material required for the medium size is 2 1/2 yards 27, 36 or 44 inches wide, or 1 1/2 yards 27 inches wide for the trimming. This pattern is cut in sizes 34, 36, 38, 40 and 42 inch bust measure.



SIX GORED SKIRT, 6902. The plain six gored skirt is a favorite one. It is admirably well adapted to a variety of materials, but is especially adapted for the heavier washable ones, such as linen, pique, poplin and the like. The skirt is cut in six gores and the closing can be made either at the left of the back or at the left of the front. The quantity of material required for the medium size is 5 1/2 yards 27 inches wide, 3 1/2 yards 36 or 2 1/2 yards 44 inches wide. This pattern is cut in sizes 22, 24, 26, 28, 30 and 32 inch waist measure.



SQUARE AND ROUND SWEEPING CAPS, WITH HALF SLEEVES, 6918

Caps that protect the hair and sleeves that protect the blouses are absolutely necessary to neatness and cleanliness when one is engaged in work that means possibility of soil. Here are models that are practical and simple and also attractive. They can be made from any simple washable material, but the square cap is especially suited to a handkerchief. The half sleeves are finished with casing and elastic at the upper edges and are easily drawn on and off. For the round cap and sleeves will be required 1 1/2 yards of material 27 inches wide or 1 1/4 yards 36 inches wide, for the square cap will be needed 1 handkerchief 18 inches square with 3 yards of ribbon; and for the half sleeves alone 1/2 yard 27 inches wide or 1/4 yard 36 inches wide will be required. The pattern is cut in one size only.



FANCY WAIST, 6909

This fancy waist is cut in one with short sleeves, and is one of the smartest that the season has brought forth. The trimming gives the suggestion of the high giraffe, or bib, that makes such a feature of present styles, yet it is finished at the natural waist line where any preferred. Medium size requires 1 1/2 yards 27 inches wide, 1 yard 36 or 3/4 yard 44 with 1 1/2 yards of all-over lace 18 inches wide, 2 1/2 yards of lace banding and 2 1/2 yards of embroidered banding. 3/4 yard 18 inches wide for yoke and collar. This pattern is cut in sizes 34, 36, 38 and very little labor for the making. This pattern is cut in sizes 34, 36, 38 and 40 inch bust measure.



CHILD'S KIMONO, 6915

The kimono that is made with a plain yoke is one of the best liked for the little children. The lower portion is full and ample and allows free movement. China silk, cotton crepe, albatros, washable flannel, lawn, batiste, all the materials that are used for kimonos are appropriate for this one. For the 2 year size will be required 4 yards of material 27 inches wide, 2 1/2 yards 36 or 2 yards 44 inches wide, 2 1/2 yards of ribbon 4 inches wide for bands. The pattern is cut in sizes of 1, 2 and 4 years of age.



COAT WITH SAILOR OR ROUND COLLAR, 6920 WITH OR WITHOUT REVERS

The coat that is made with a fancy collar is a favorite one of the season. This model is exceptionally chic and smart, while it also allows of three methods of treatment. It can be made with the ends of the collar arranged over the revers or with the collar arranged over the revers and the three ways are equally smart. Medium size requires 5 yards of material 27 inches wide, 3 1/2 yards 44 or 32 inches wide with 3 1/2 yards of banding. The pattern is cut in sizes 34, 36, 38, 40, 42 and 44 in.



BLOUSE OR SHIRT WAIST, 6934

Shirt waists that are closed slightly to the left of the front are among the latest to have appeared. This one can be trimmed as illustrated or made plain as preferred. The quantity of material required for the medium size is 3 1/2 yards 27 inches wide, 2 1/2 yards 36 or 1 1/2 yards 44 inches wide, with 1 1/2 yard of all-over embroidery and 1 yard of plaiting to trim as illustrated. This pattern is cut in sizes 34, 36, 38, 40 and 42.



CHILD'S DRESS, 6924

Here is a frock that can be made plain as illustrated or with the yoke and front panel embroidered or braided or cut from fancy material, consequently the model is adapted to both the dainty, dressy frock and to the simple one suited to every day use. For a child 4 years of age will be required 3 yards of material 27 inches wide, 2 1/2 yards 36, or 2 yards 44 inches wide, with 7 yards of banding and 1 1/2 yards of edging to trim as illustrated. This pattern is cut in sizes for children of 2, 4 and 6 years of age.

Sewing Room Hints

TO KEEP THREAD FROM KINKING Always thread a needle before breaking thread from spool and the thread will not tangle. This is essential in making point lace. PROTECTION FOR THE FINGER A piece of court plaster on the end of the forefinger of the left hand will protect it from needle pricks when sewing. TO MAKE BUTTONS STAY ON Use a new cornet string to fasten buttons to children's clothes. Take

a small piece, run through two holes of the button and sew ends firmly to garment. This allows plenty of "play" and prevents buttons from being ironed off. A USE FOR TWEEZERS Why not keep a pair of tweezers in the work basket? You have no idea how useful they are to pull out stubborn ends of basting cotton, particularly when the machine stitching has run over the lastings. Such accidents are very frequent, no matter how careful the seamstress may be,

and the tweezers will really prove of great assistance. BUTTONHOLES IN THIN GOODS Whip them over before cutting, leaving a thread in the middle to cut by. In using materials that are very thin, make them before you cut them, and the goods will not pull out with the thread. FOR UNFINISHED GARMENTS A convenience for the sewing-room is to tack a strip of cloth three inches

wide across one side of the wall on which pin unfinished garments and patterns often in use. FOR A REFRACTORY MACHINE Our sewing machine had become so hard to work as to be almost useless. After repeated oiling, which brought no improvement, I removed the head, plunged it into boiling water for a few minutes, dried and oiled, and it has been running like a new machine ever since.