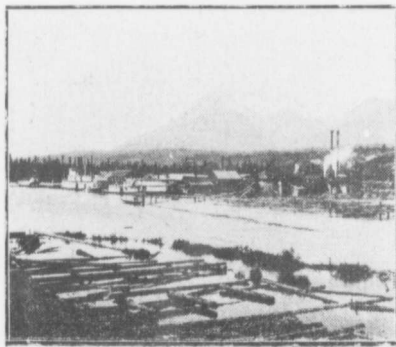


Oregon, by rail as far possible, and thence by pack-trail along the valley of the Kootenay and across Canal Flat and down the Columbia in small row-boats. As soon as the "Duchess" was placed on the route, supplies were purchased in Canadian markets, brought by rail to Golden, and thence up river by steamer to their various points of destination. At the present writing the increased traffic necessitates the use of two large and commodious steamers, the "North Star" and the "Ptarmigan" making semi-weekly trips from Golden to Lake Windermere.



STEAMBOAT LANDING, GOLDEN,