

Head Office for Canada: MONTREAL

WM. MACKAY, Gen. Manager. J. H. LABELLE, Asst. Manager.



The Largest and Strongest Fire Insurance Company in the World.

Maguire & Connon
GENERAL AGENTS

Office: "Royal Building," 27 Wellington St. E., TORONTO.
Telephones (Main 6000. Residence, North 3571 and M. 978.

The Bay of Quinte Railway Company

Connecting with the Grand Trunk Railway System at Napanee and Kingston. Connecting with the Canadian Pacific Railway at Tweed. Connecting with the Central Ontario Railway at Bannockburn. Connecting with the Kingston & Pembroke Railway at Harrowsmith. Connecting at Deseronto with steamers operating on the Bay of Quinte and Lake Ontario.

Trains leave Napanee for the north at 7.50 a.m., 12.10 p.m., 1.25 p.m., and 4.25 p.m.

Trains leave Tweed for the south at 7.00 a.m., 7.20 a.m., and 2.55 p.m., and for the north leaving Tweed at 11.30 a.m. and 4.50 p.m.

Trains run between Deseronto and Napanee as follows:—

a. Leave Deseronto at 1.00 a.m., 1.40 a.m., 5.55 a.m., 7.00 a.m., 7.20 a.m., 9.50 a.m., 11.30 a.m., 12.40 p.m., 12.55 p.m., 3.45 p.m., 6.10 p.m., 7.40 p.m.

Leave Napanee at 2.20 a.m., 3.30 a.m., 6.30 a.m., 6.35 p.m., 7.55 a.m., 10.30 a.m., 12.05 p.m., 1.20 p.m., 11.00 a.m., 4.30 p.m., 6.50 p.m., 8.15 p.m.

The Deseronto Navigation Company operate the str. "Ella Ross" and str. "Jessie Bain" running between Picton, Deseronto, Belleville and Trenton, as also the str. "Where Now" making the famous 50-mile ramble from Gananoque to all points in and around the Thousand Islands, connecting with all trains at Gananoque, as well as making the railway transfer between Gananoque and Clayton, N.Y.

R. WALTER RATHBUN, President and General Manager. J. P. CHAPMAN, General Freight and Passenger Agent.

THE HAMILTON STEEL & IRON COMPANY, LIMITED

Pig Iron, Iron and Steel Bars, Bands, Railway Spikes, Washers, Forgings, Etc. :: :: Etc.

Address all communications to the Company

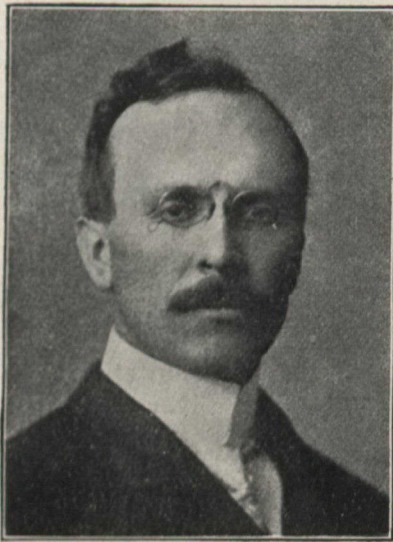
HAMILTON - ONTARIO

Literary Notes

PEOPLE generally have vague ideas about socialism and this probably explains the title of Professor Le Rossignol's new book, "Orthodox Socialism." It implies that there is an unorthodox socialism as advocated by anarchists and other extremists.

Professor Le Rossignol was born in the city of Quebec, educated at McGill and Leipzig, and has held positions in Clark University and Ohio University, and is now professor of economics in the University of Denver. He has written "Monopolies, Past and Present (1901)," "Taxation in Colorado (1902)," "History of Higher Education in Colorado (1903)," and many articles published in various publications. He has a volume of short stories on French-Canadian life almost ready. Recently he has been in New Zealand investigating economic conditions and is now preparing a volume on the result of his studies there.

His treatise on socialism is written from a scientific and dispassionate standpoint, and will therefore prove of great practical value. The first chapter defines the creed of socialism and traces its historic rise. Then come discussions of the labour-cost theory of value; the iron law of wages; surplus value; the use of machinery and its effect upon skilled labour; panics, strikes and industrial crises; the struggle of mass with class; and the social revolution which has been threatened. Merely to enumerate these sub-topics will show the practical nature of the work. As for the author's style, it is well known from previous excellent work. Calm, clear-cut, and straight-



Professor Le Rossignol,
Author of "Orthodox Socialism."

forward, he supports his statements by needful facts and figures which at once show the authority of his opinions. The volume is a worthy addition to the "Crowell Library of Economics," and will be welcomed by students and all general readers who are observant of the times. Thomas Y. Crowell & Company, New York. Cloth, \$1.00.

Professor Shortt has an able article on "The Colonial Conference and its Functions" in the April "Queen's Quarterly." The Professor seems to agree quite thoroughly with Sir Wilfrid Laurier that any attempt to making the decisions of a conference binding would lead to complications and disaster.

"Canada's Century—A Review of Labour Conditions of To-day," is the title of a pamphlet by Major Robert Larmour, just issued by William Briggs, Toronto. It is a further plea for "yellow" labour as necessary at the present stage of our economic development.

Mr. J. W. L. Forster, a Canadian artist, has written an appreciative sketch of William Adolphe Bouguereau under the title "A Master of the French School." (Toronto: William Briggs. 25 cents.)

CANADIAN HOTEL DIRECTORY

TORONTO HOTELS

The Arlington
King and John Streets.
200 Rooms. \$2.00 up.
American Plan.

King Edward Hotel
—Fireproof—
Accommodation for 750 Guests. \$1.50 up.
American and European Plans.

Palmer House
200 Rooms. \$2.00 up.
American and European.

Rossin House
European \$1.00 up.
American \$2.00 up.
Accommodation for 500 Guests. Fireproof.

ONTARIO HOTELS

Caledonia Springs Hotel (C.P.Ry.)
CALEDONIA SPRINGS, ONT.
American Plan, \$3.00 up.
Accommodation for 200 Guests.

Hotel Royal
HAMILTON.
Largest, Best and Most Central.
\$2.50 per day and up. American Plan.

MONTREAL HOTELS

Corona Hotel
453-465 Guy Street. 125 Rooms.
\$1.00 up. European.

The Place Viger (C. P. Ry.)
American Plan, - \$3.50 up.
Accommodation for 270 Guests.

St. Lawrence Hall
European Plan.
300 Rooms. \$1.00 per day upwards.

QUEBEC HOTELS

The Chateau Frontenac (C.P. Ry.)
American Plan, - \$3.00 up.
Accommodation for 450 Guests.

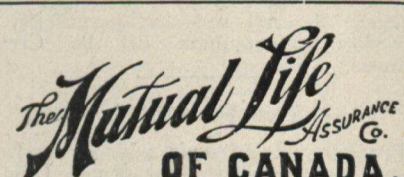
MANITOBA HOTELS

The Royal Alexandra (C.P. Ry.)
WINNIPEG, MAN.
European, \$2.00. American, \$4.00.
Accommodation for 600 Guests.

BRITISH COLUMBIA HOTELS

Glacier House (C. P. Ry.)
GLACIER, B.C.
American Plan - \$3.50 up.
Accommodation for 200 Guests

Hotel Vancouver (C. P. Ry.)
VANCOUVER, B.C.
American Plan, - \$3.50 up.
Accommodation for 400 Guests.



is a thoroughly
SOUND and PROGRESSIVE
Company confining its business to the Dominion of Canada and Newfoundland, noted for the most healthy climates in THE WORLD.

Its Expense rate is the **LOWEST OF ALL CANADIAN COMPANIES**, being only 16.94% of Total Income for 1906, a reduction of 1.48% on 1905.

A member of the Royal Insurance Commission when examining a Montreal Company said, referring to the Mutual Life of Canada, "that it was one of the very best Companies they had examined," and again "that its management was of a high standard." The Royal Commissioners found no flaw in the armor of

Canada's Big Mutual
Head Office - WATERLOO, Ont.