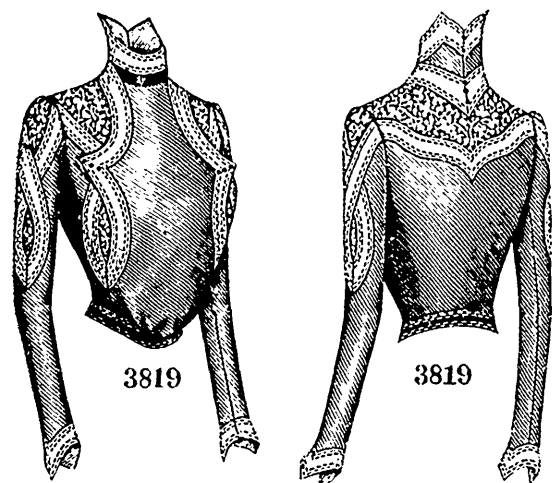


below the waist-line at the front. The closing is invisibly made at the center, and above it the fronts are in V outline to accommodate the broad ends of the deep sailor-collar, which

bon bows and a cascaded ruffle of chiffon. The back is seamless and has plaited fulness at the waist-line; it is cut low at the top to reveal a deep, smooth yoke and is made ornamented by two circular revers, similar revers being applied on the fanciful fronts, which have decided plaited fulness at the bottom. The fronts are shortest at the center and are slightly reversed; they flare broadly over a yoke-chemisette which is gathered at the bottom, where it puffs out slightly. Two turn-over sections of velvet ornament the standing collar, and fancy sectional cuffs complete the small sleeves.

Crêpe de Chine and shirred chiffon or Liberty satin and spangled net will develop a handsome waist by the mode.



Front View.

Back View.

LADIES' FANCY BASQUE-WAIST, HAVING THE FRONT EXTENDING TO THE BACK AT THE NECK. (KNOWN AS THE LILITH WAIST)

(For Description see Page 316.)

is fancifully pointed at the back. The comfortably small sleeve is of the two-seam variety.

The toilette may be reproduced in homespun, zibeline, piqué or duck.

FIGURES NO. 149 R, 150 R AND 151 R.—LADIES' CALLING TOILETTES AND FANCY BODICE.

(For Illustrations see Page 293.)

FIGURE NO. 149 R.—LADIES' TOILETTE.—This comprises a Ladies' waist and skirt. The waist pattern, which is No. 3796 and costs 10d. or 20 cents, is in eight sizes for ladies from thirty to forty-four inches, bust measure, and is again illustrated on page 312. The skirt pattern, which is No. 3820 and costs 1s. or 25 cents, is in seven sizes from twenty to thirty-two inches, waist measure, and may be seen differently represented on page 321 of this magazine.

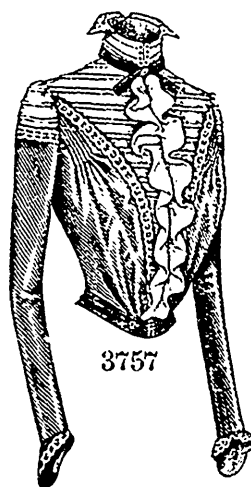
The graceful skirt forming part of the dainty toilette here represented made of figured organdy over silk is fashioned on very unique and modish lines. It is a six-gored mode and is characterized by clusters of forward-turning plaits laid in the side-gores, the plaits falling gracefully free a little below the knee. The skirt has a double box plait at the back and is arranged over a five-gored foundation skirt without fulness at the top.

The waist, which has a full pouching front and backs that have plaited fulness at the bottom, is closed at the center of the back with buttons and button-holes. It is low and square at the neck, where it is finished with a self-ruffle and ribbon softly draped and artistically bowed at the left side. The waist is sleeveless, and with it is worn a separate guimpe of the organdy that is tucked before the parts are cut out. The guimpe is absolutely tight-fitting and closes invisibly at the back. A high stock is at the neck, and a flaring cuff headed by a twist of ribbon completes the small sleeve.

The guimpe may be reproduced in all-over lace or embroidery, while vailing, crêpe de Chine or silk may be selected for the waist and skirt.

FIGURE NO. 150 R.—LADIES' FANCY BODICE.—This illustrates a Ladies' waist. The pattern, which is No. 3827 and costs 10d. or 20 cents, is in nine sizes for ladies from thirty to forty-six inches, bust measure, and is differently shown on page 311.

Separate waists still retain their hold in public esteem. The dressy one here pictured is developed in heliotrope cloth, white tuckered silk and dark purple velvet and enriched by rib-



Front View.



Back View.

LADIES' BASQUE-WAIST, HAVING A FANCY YOKE-CHEMISSETTE THAT MAY BE PLAIN OR TUCKED.

(For Description see Page 316.)

pattern, which is No. 3774 and costs 10d. or 20 cents, is in seven sizes for ladies from thirty to forty-two inches, bust measure, and may also be seen on page 307.