

IN THIS ISSUE:—MOVEMENT TO BETTER CANNED GOODS INDUSTRY

# CANADIAN GROCER

Only Weekly Grocery Paper Published in Canada

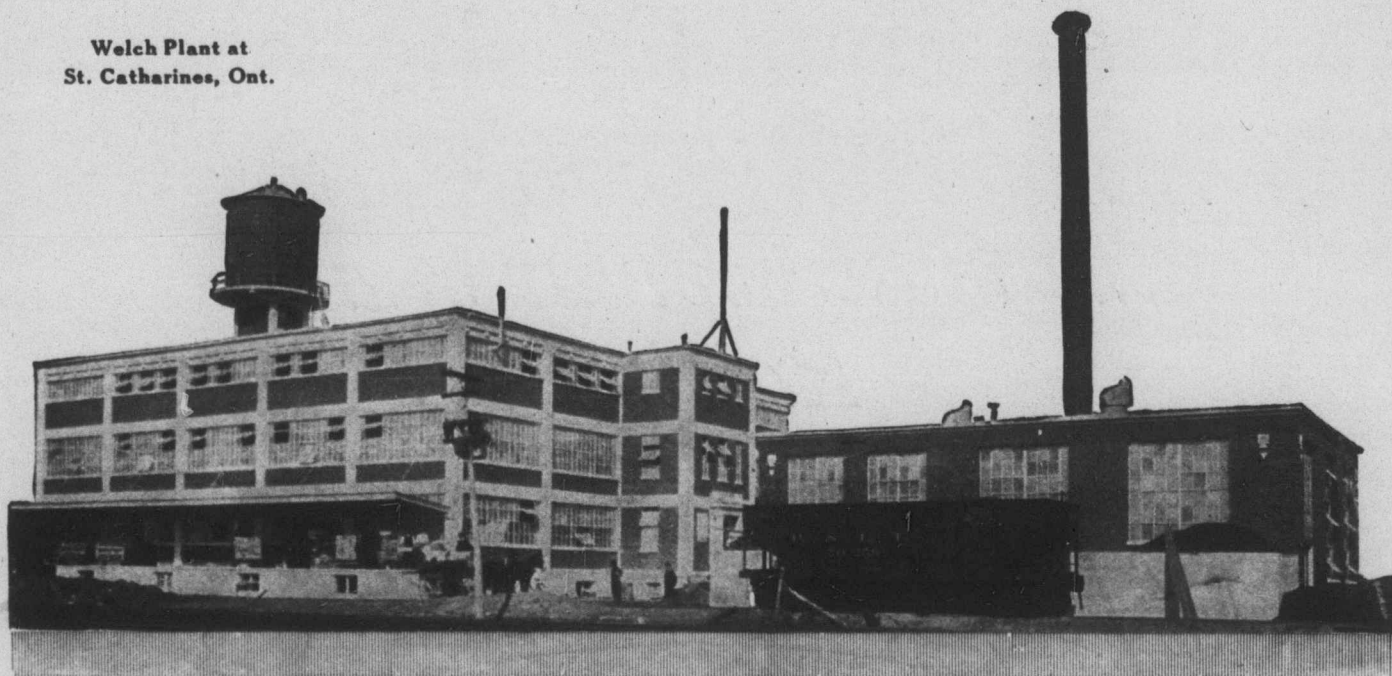
THE MACLEAN PUBLISHING COMPANY, LIMITED

Vol. XXX

PUBLICATION OFFICE: TORONTO, APRIL 2, 1915

No. 14

Welch Plant at  
St. Catharines, Ont.



## Canadian dealers profit by the growing Dominion demand for Welch's

The new Welch Plant at St. Catharines, Ontario, was built to supply the steadily increasing demand for Welch's in the Dominion.

Located in the heart of the famous fruit belt between Lakes Ontario and Erie — this model Welch Plant converts choicest Canadian Concord grapes into

# Welch's

*"The National Drink"*

Absolutely pure, unsweetened, unfermented—Welch's will please the most exacting custom. You can recommend it to your customers with the assurance that it will give entire satisfaction.

The four convenient sizes of Welch's meet all requirements. At your suggestion some of your customers order Welch's by the case.

Splendid new window and store display material furnished without charge.

Welch's is sold by Leading Jobbers

**The Welch Company, Limited, St. Catharines, Ontario**