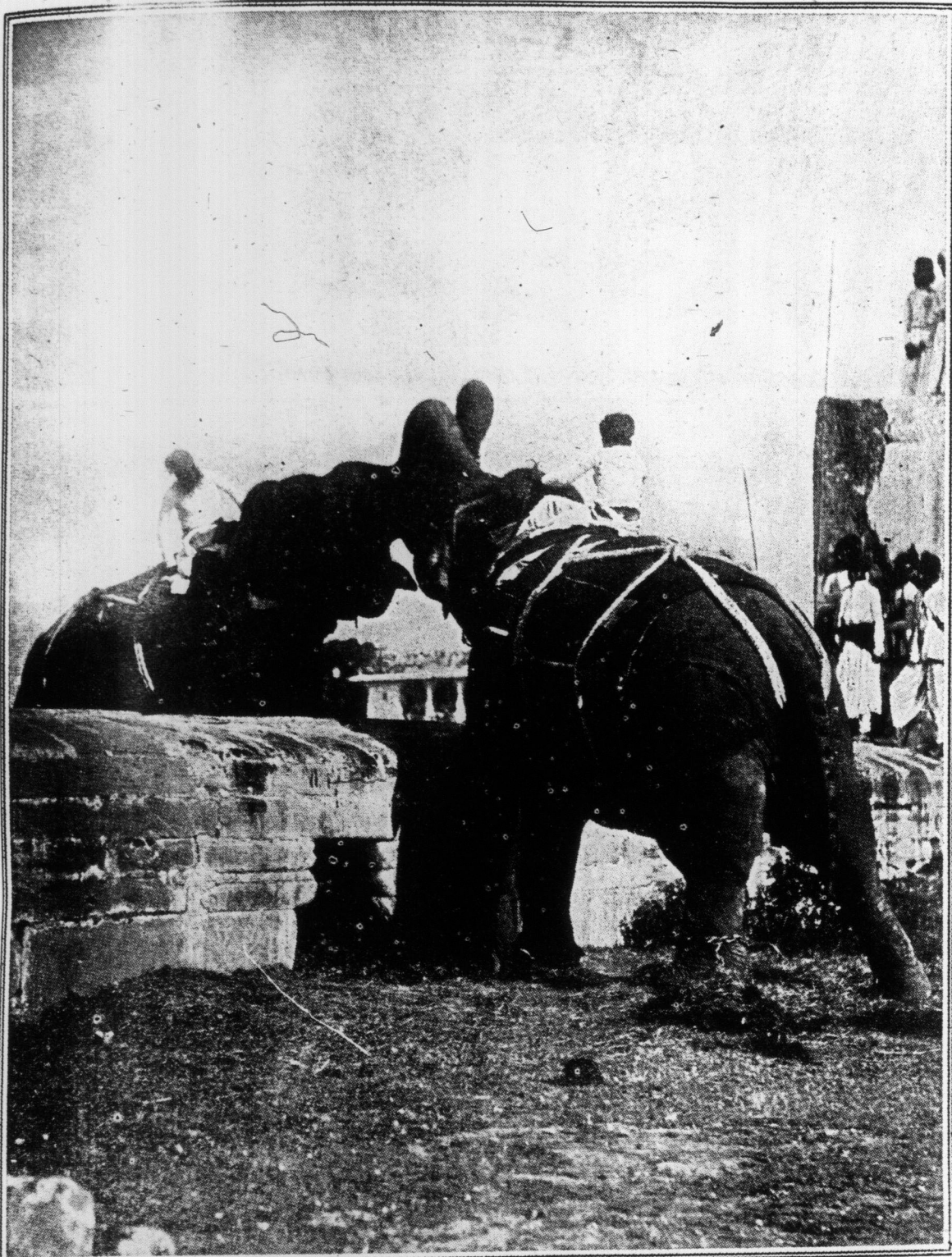


# An Elephant Tussle in India---Employees of Big Industrial Institutions



TWO ELEPHANTS AT THE STONE PALISADE OF AN INDIAN ARENA. THE CONTEST IS MORE OR LESS A WRESTLING MATCH. SOME TUSKERS ARE GREAT FIGHTERS AND ARE EMPLOYED IN THE KEDDAHS TO OVERCOME REFRACTORY NEWCOMERS. THE VALUE OF A NEWLY TAMED ELEPHANT VARIES FROM \$400 TO \$8000.



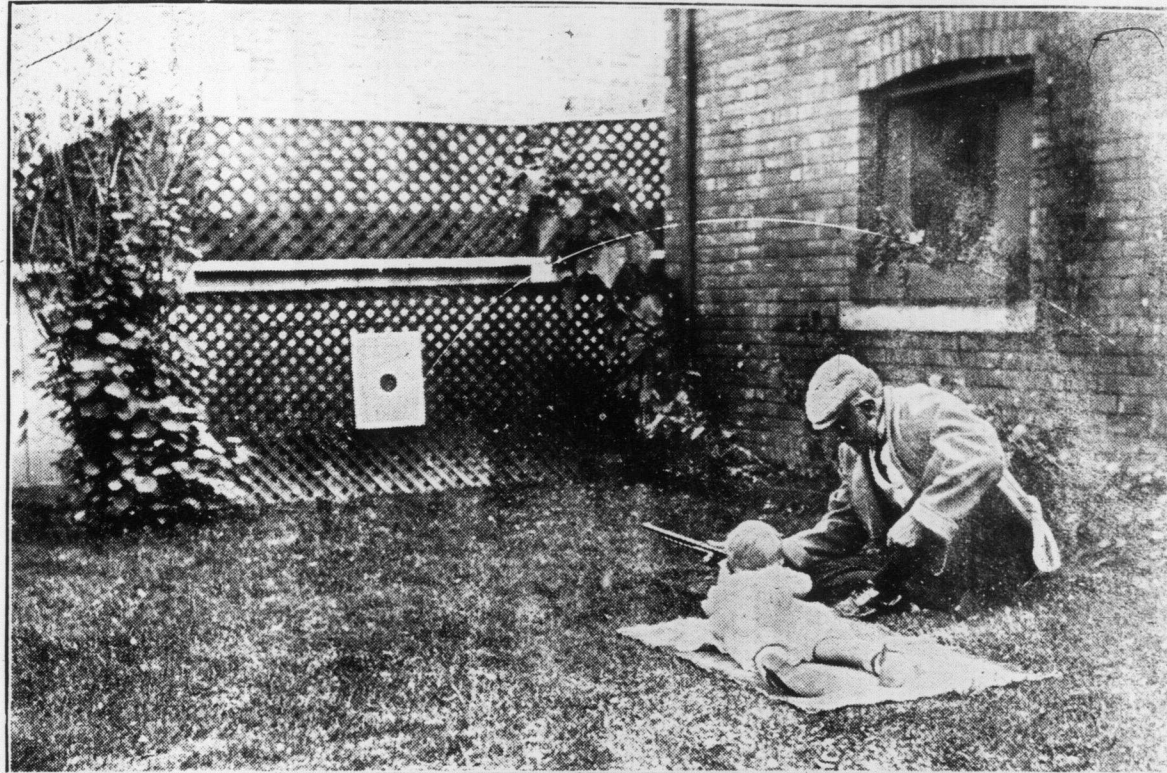
MRS. L. DAY



MISS M. LYALL

These graduate nurses have been offered positions out west. Mrs. L. Day is one of the pioneers of Earls Court.

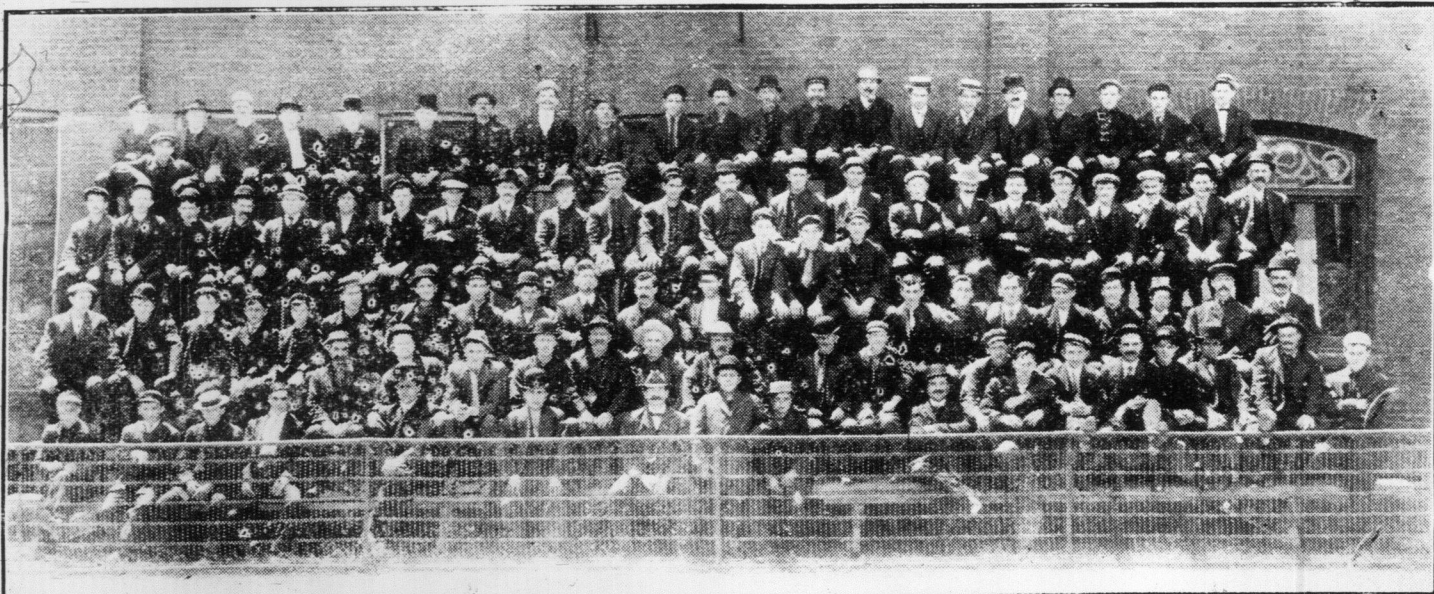
In 1900 Sweden consumed 253,132 metric tons of artificial fertilizers, of which one-half were produced at home. In the course of a decade the industry has developed so rapidly that there is now a surplus of superphosphate available for export, amounting to 17,000 tons in 1909.



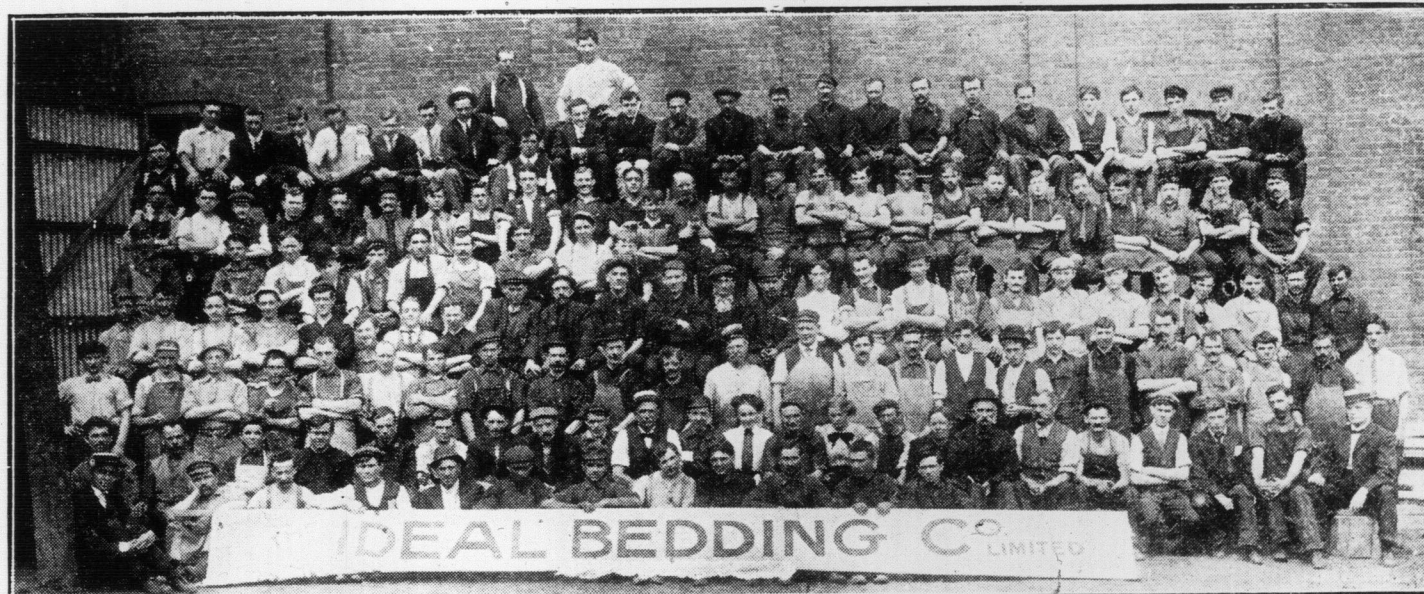
COMING BISLEYMAN—DR. N. A. POWELL, INSTRUCTING HIS GRANDSON, HART McCULLOUGH, IN THE CLIFFORD POSITION.



FAIR JUDEANS.



GENDRON MANUFACTURING CO., LIMITED.



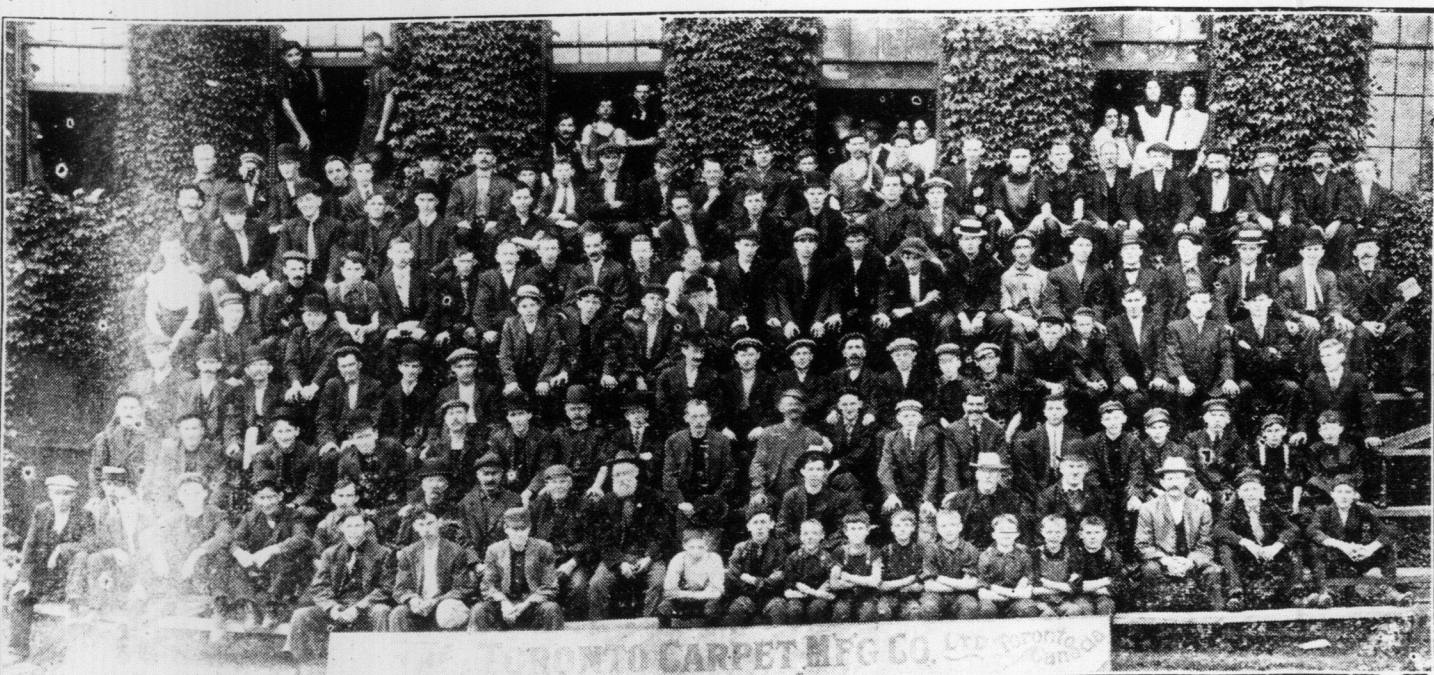
IDEAL BEDDING CO., LIMITED.



OTTO HIGEL CO., LIMITED.



G. T. R. FREIGHT DEPARTMENT.



TORONTO CARPET MFG. CO., LIMITED, WEAVERS.



AMERICAN ABELL ENGINE AND THRESHING CO., LIMITED