

## EATON'S DAILY STORE NEWS

## 1869—GOLDEN JUBILEE—1919



## Men's Blue Chambray Work Shirts, Special, 98c

The Chambray Work Shirts have lay-down collars, yoke, pocket and full-sized bodies. Sizes 14½ to 17. Special, each, 98c.

The Negligee Shirts are single stripes, cluster pin stripes and several spaced or grouped effects; some in blue, black, mauve or green, and others in two or more shades combined. Materials consist of printed cotton or Madras. Some have soft double cuffs; others laundered cuffs and neckbands. All are in coat style and have different sleeve lengths. Sizes range from 14 to 17½. Each, \$1.75.

The Neckwear is in printed Jap crepe or foulard, of silk and artificial silk mixture, in polka dots and a large range of figured or floral designs. There's also a good range of plain shades of blue, black, purple, green, grey, red or brown. All are four-in-hand style, with fairly wide ends, and thin, firmly-sewn neckbands that slide easily in the collar. Today, 50c.

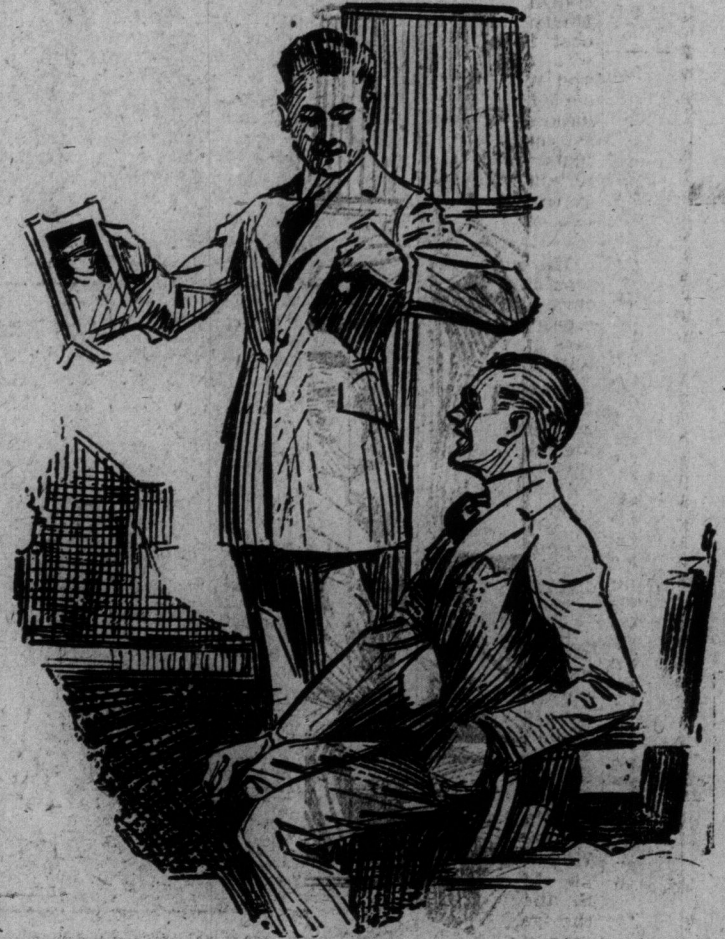
Men's Soft Collars, "W., G. and R." and "Tooke" Brand. In several styles, and of pique or Madras, with interlining and band of cotton. Sizes 14 to 16. Each, 29c.

Boys' Fleece-lined Combinations, "Penangle" brand, of a comfortable weight; have French neck, closely ribbed cuffs and closed crotch. Sizes 22 to 32. Each, \$1.50.

Men's All-wool V-shaped Neck Pullover Sweaters, in full cardigan or half cardigan stitch, with trim on neck, cuffs and bottom of sweater in grey with black and cardinal or light or dark blue trim. \$6.50.

Also black with orange trim, or white with royal trim. \$6.00. Sizes 34 to 40, suitable for early spring or sport wear. Today, \$6.00 and \$6.50.

—Main Floor, Queen St.



## Boys' "Trencher" Tweed Suits With All Round Belt, Special, \$8.75

Navy Blue Reefers Are Also a Special at \$6.95

A better opportunity to save on the purchase of his spring suit might be long in the coming. They are of sturdy wool and cotton and cotton and wool mixed tweed suits, in medium and dark shades of grey and brown in the popular trench model with all-round belt, having buckle fastener; form-fitting and plain box back, slash and patch pockets, and full fashioned bloomers with belt loops, side, hip, watch pocket and "governor" fastener. Sizes 26 to 35. Today, \$8.75.

Boys' Reefers, of all-wool, rough finished navy blue "Fox's" serge, in double-breasted style, with black velvet collar. Have emblem on sleeves, brass-finished buttons, and good body linings. Sizes 21 to 27; 3 to 9 years. Today, \$6.95.

—Main Floor, Queen St.

## Featuring New Umbrellas for Men and Women, \$3.00

The advent of spring and April showers calls for the need of umbrellas and in the collection of new umbrellas, those at \$3.00 are specially featured. There are styles for both men and women. They are made with cotton and silk mixture covers. Handles in plain woods or highly polished woods. The women's are in the long or short straight style; some have cord wrist loops. The men's are crook or opera shape; some mounted. Price, only, \$3.00.

—Main Floor, Yonge St.

## Men's "EATON Brand" All-Wool Saxony Finished Serge Suits, \$43.50

Offer a Measure of Value and Hand Tailoring That Should be of Particular Interest to Men Who Are Shedding Khaki and Returning to Civilian Life

Have long, soft-rolling "Hymo" lapels. Are in three-button, semi-fitting, conservative style, and are of all-wool blue serge, in cheviot finish; have Italian twill linings. Sizes 36 to 44. Price, \$43.50.

AT \$30.00 ARE SUITS OF UNION WORSTEDS AND TWEEDS.

Suits that give splendid satisfaction for business wear. In many patterns. One line is in a dark Oxford grey union worsted, with a faint thread stripe. Another is in a firmly woven tweed, wool and cotton mixture, in a rich dark brown, showing an invisible check. Others of union worsted are in dark grey pin checks or pick-and-pick patterns, in dark Oxford or Cambridge grey, a favorite with the business man, or are in the three-button, semi-fitting styles, and have soft roll, peak or notch lapels. Sizes 36 to 44. Price, \$30.00.

## Splendid Values in Wall Papers, Featuring for Today, Canadian and American Papers at 37 1-2c Single Roll

American and Canadian Papers, for halls, living-rooms, dining-rooms, etc., shadow, tapestry and two-tone effects, in grey, buff, tan, green, blue, brown, etc., colorings. Special value, per single roll, 37½c.

Chintz Bedroom Papers, soft shadow colorings of pink, blue, grey, green, rose, etc., on white backgrounds. Special value, single roll, 25c.

Moire Ceiling Papers, neat patterns in white or cream colorings, suitable for almost any room. Special value, single roll, 7c.

Printed Oatmeal Papers, fine stripe and shadow stripe patterns, on yellow, buff, tan, brown and green grounds. Fancy cut-out or scenic borders to match. Special value, single roll, 14c.

Borders, yard, 11c.

—Fourth Floor, Queen St.

## STORE CLOSES

Saturday at 1 p.m.

GOODS BOUGHT ON SATURDAY MORNING WILL BE DELIVERED ON MONDAY MORNING

## 200 Navy Blue Sailor Tams and Hats for Children, Special 73c

Bright, Well Made Hats That Will Solve the Problem of What to Buy the Kiddie for Spring

Then think of the price, 73c—of course they couldn't be made for such a figure. The tams are of union serge, are well lined, and have corded ribbon name band, tailored bow or streamers at side. Also included are 48 all-wool chinchilla hats, in dome crown shape, having drooping flexible brims. Sizes 6 to 7. Special, each, 73c.

Men! Here Are Spring Fedoras in Clearance at \$2.35

They're of good quality fur felt in fedora shape with crease crowns of medium block, with medium or wide brims, some flat, some flaring. Have bound or plain edge. In green, grey, black, brown and intermediate shades. Sizes in the lot 6½ to 7½. Special, each, \$2.35.

—Main Floor, James St.

## Special Offerings in Draperies, Featuring English Art Sateen at 39c Per Yard

English Art Sateen, 30 inches wide, an exceptionally choice assortment of soft combinations of rose, green, blue, tan, mulberry and pink, in all-over floral patterns. Extra well printed on light and dark backgrounds, with a soft, mercerized finish, very effective and durable for draperies, cushions or slip covers. Specially priced for quick selling. Today, yard, 39c.

250 Pairs Nottingham Lace Curtains, 36 to 43 inches wide by 2¾ yards long, in white only, showing floral, medallion and all-over effect, neat scalloped edges. For this item we cannot take phone or mail orders, the quantity being limited. Not more than four pairs to a customer. Most curtains are half price. To clear, pair, 98c.

Curtain Scrim, 36 inches wide, borders of imitation drawn thread work. Mostly in ecru, a few in ivory. A yard, greatly reduced, 17c.

50-inch Cotton Repp, reversible finish, in medium and dark blue, mulberry and rose. Some of the pieces show slight imperfections, which would scarcely be noticed when made up. Special, yard, 69c.

Material for Over-Draperies and Valances, 50 inches wide, with a repp and armure weave, showing neat over design in trellis and stripe effects, bright mercerized finish. A few marks or missed thread on some, but not enough to be much noticed when hanging. Colors light and dark rose, tan, gold, brown and blue. Special, yard, 98c.

Oil Opaque Window Shades, 37 inches wide by 70 inches long, green only. A good quality material, mounted on Harshorn rollers. This is a very serviceable window shade. Complete with brackets, nails and ring pull, 68c.

—Fourth Floor, Yonge St.

## Attractive Offerings in Drapery, Featuring English Art Sateen at 39c Per Yard

English Art Sateen, 30 in. wide, an exceptionally choice assortment of soft combinations of rose, green, blue, tan, mulberry and pink, in all-over floral patterns. Extra well printed on light and dark background, with a soft mercerized finish; very effective and durable for draperies, cushions or slip covers. Specially priced for quick selling. Today, yard, 39c.

250 Pairs Nottingham Lace Curtains, 36 to 43 inches wide by 2¾ yards long, in white only, showing floral, medallion and all-over effect, neat scalloped edges. For this item we cannot take phone or mail orders, the quantity being limited. Not more than four pairs to a customer. Most curtains are half-price. To clear, pair, 98c.

Curtain Scrim, 36 inches wide, borders of imitation drawn thread work. Mostly in ecru, a few in ivory. A yard, greatly reduced, 17c.

50-inch Cotton Repp, reversible finish, in medium and dark blue, mulberry and rose. Some of the pieces show slight imperfections, which would scarcely be noticed when made up. Special, yard, 69c.

Material for Over-Draperies and Valances, 50 inches wide, with a repp and armure weave, showing neat over design in trellis and stripe effects, bright mercerized finish. A few marks or missed thread on some, but not enough to be much noticed when hanging. Colors light and dark rose, tan, gold, brown and blue. Special, yard, 98c.

—Fourth Floor, Yonge St.