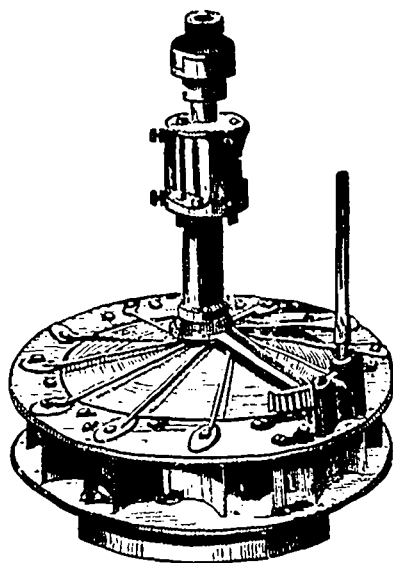


Readers are asked to contribute freely to the columns of the CANADA LUMBERMAN, and to send in items of news whenever possible. Let each subscriber resolve to report the news of his locality, such as changes of ownership, mill improvements, market conditions, etc., and the whole will give a valuable compendium of information.

Two thousand two hundred acres of pine trees are cut down every year in order to make the wood cases for lead pencils, of which more than two thousand are in Florida, says an exchange. There are twenty-six pencil works in Baltimore, of which twenty-three are in Nuremberg, the great European centre of the lead pencil trade. These factories employ from 100 to 10,000 workers, and produce 4,000,000 lead and chalk pencils every week. One factory alone has a weekly production of over 1,000,000 pencils.



DRY WEATHER WATER WHEELS



With abundance of water, and indifference regarding results, most any old wheel can be made to go—more or less.

The TOUCHSTONE of MERIT and VALUE is to operate when the water supply is at its lowest, and the need for more is greatest. To-day is the time to provide for such a condition by placing

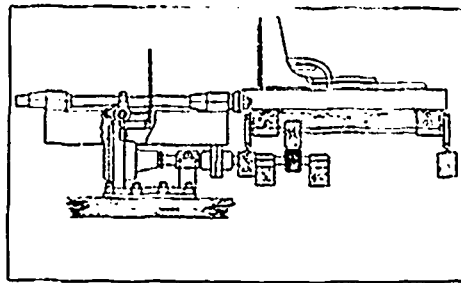
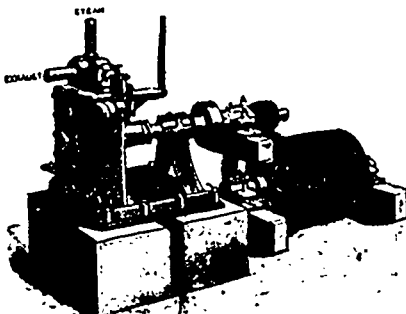
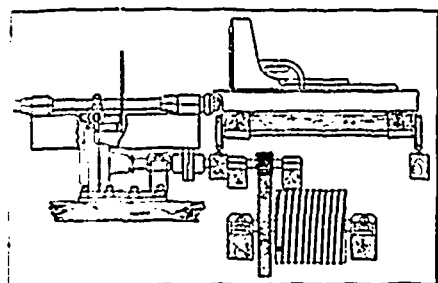
A "LEFFEL" A "VULCAN" OR A "PERFECTION" TURBINE

With no other wheel can the water supply be so minimized without destroying the efficiency of the wheel. These wheels give the very highest results under any and all conditions of water. Made to give any power from 1 h. p. to 2500 h. p.

Improve Circular Saw Mills, Automatic Shingle Machines, Shafting, Pulleys, Gears, Hangers, etc.

MADISON WILLIAMS,
Successor to PAXTON, TATE & CO.,
PORT PERRY, ONT.

H. E. PLANT, Agent, Common and Nazareth Sts., Montreal, Que.



Embodies the following Advantages:
SIMPLICITY OF CONSTRUCTION,
POSITIVE AND EASY MANAGEMENT,
ECONOMICAL USE OF STEAM,
SMALL SPACE OCCUPIED, CHEAPNESS,
EASY ADAPTATION TO EITHER NEW
MILLS OR THOSE NOW IN USE.

The movement of the engine in either direction is under the absolute control of the sawyer, thus accommodating the speed of the feed to the size of the logs.

Mill men who have used other makes of Steam Feeds comment favorably on the economical use of steam of our feed over others.

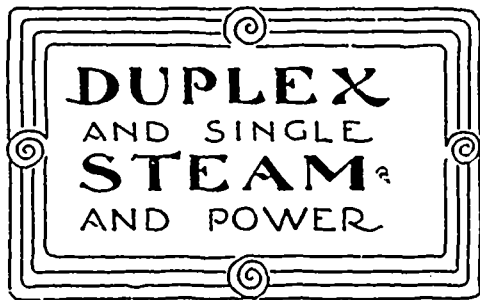
Write for Catalogue and full particulars.

The **DAKE**
STEAM FEED

THE JENGKES MACHINE CO. - **Sherbrooke Que.**
Succeeding the PHELPS MACHINE CO., EASTMAN, QUE.

Pumps

& HYDRAULIC
MACHINERY



The Northey Mfg. Co. Ltd.
TORONTO

THE LAURIE ENGINE CO. - **MONTREAL**
SOLE AGENTS FOR PROVINCE OF QUEBEC.

TO BELT USERS:

Try Our **GENUINE**

ENGLISH OAK-TANNED BELTING

and Our **Lancashire Hair Belting**

D. K. McLAREN

Victoria square, MONTREAL