

one can tell fortunes with the aid of the instructions which go with each pack. The cards can also be used for all card games as well, and are packed in easel compartment

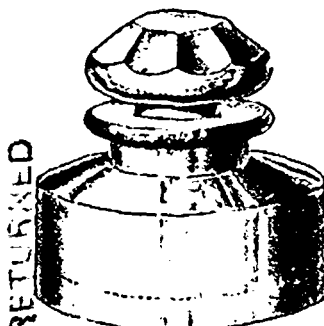


The Brown Bros., Limited.

Thaddeus David's 1 1/2-oz. stamping ink in seven colors (assorted boxes of one dozen bottles) to retail at 25c. per bottle.

DIRECT TO THE TRADE.

Hourd & Co., London, who sell direct to



The Brown Bros., Limited.

the trade, are having a very large demand for their new "Acme" crokinole board, finished in five beautiful colors. They make a striking and attractive display in the store, without which no Christmas stock is complete. The men are unusually well finished and got up in attractive cardboard boxes. Orders should be placed at once.

WASTE PAPER BASKETS.

Warwick Bros. & Rutter are showing great variety in wicker waste paper baskets, round and square, and all sizes. The prices range, retail, from 40c. to \$1.

NEW TISSUE PAPER.

A beautiful novelty is the floral tissue paper, in different colorings and patterns. The designs are fancy elaborations of various flowers and the general effect is fine. It is used for lamp shades. Warwick Bros. & Rutter have a full line.

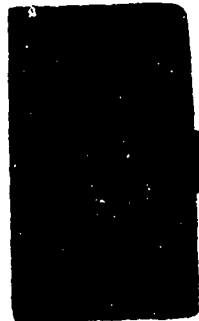
A HELP TO SELL CARDS.

Russell & Morgan, of the United States Playing Cards Co., are now doing up their expensive playing cards on a show-card which stands on the counter easel fashion. War-

wick Bros. & Rutter are handling the line here.

DECKLE EDGE.

The eye of THE BOOKSELLER AND STATIONER man caught an exhibit of paper in Warwick Bros. & Rutter's warehouse this week as something unique and handsome. It was found to be a display of the imitation hand-made deckle edge paper. It is shown in two sizes of note paper with envelopes to match.



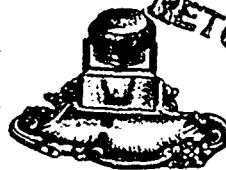
RETURNED
The Brown Bros., Limited.

CASHMERE FINISH.

The fine line of paper called Cashmere Finish which Warwick Bros. & Rutter are offering the trade is shown in both tablets and notepaper sizes with envelopes to match. It is a good line of goods and retails at a popular price.

WINDOW ATTRACTIONS.

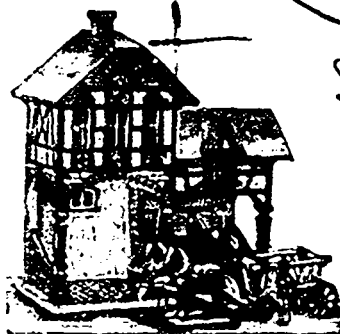
Nerlich & Co. have some capital window attractions which the dealer will find new and amusing. Several of them were described in our last issue. A new piece is the terra cotta figure and face of a jolly negro boy with a countenance and coloring exactly to life. When wound up the boy's eyes move from side to side. It will run from six to eight hours. The figure is dressed in regular clothes, breeches and shirt, and a big straw hat. It is a perfectly natural figure.



The Brown Bros., Limited.

TOY HOUSES AND MODEL STORES.

There is a specially big demand for doll houses, Nerlich & Co. find; the new doll



No. 315-5.—Nerlich & Co.

can open out the house and find papered and carpeted rooms to furnish.

Besides these toy doll houses must be mentioned the kitchens, stables, butcher shops, etc., in all sizes to suit any purse. Of a few of these we give illustrations in this issue. No. 315-5 is a three-horse stable, each 17 inches wide and 18 inches high, and the price is \$24 per dozen. No. 315-15 is a grocery store, in size 18 inches long and 10 inches high, and the price \$12 per doz. No. 315-30 is a warehouse 8 1/2 inches long and 15 inches high, at \$13.20 per dozen.



No. 315-30.—Nerlich & Co.

PLAYING CARDS DISPLAYED.

Buntin, Gillies & Co., Hamilton, are now sending out the higher grades of American playing cards in easel boxes of half dozen, thus enabling a retailer to make a handsome display of playing cards. The cards which



No. 315-15.—Nerlich & Co.

come in this shape are: the new Nile fortune cards, the Circus, Trophy Whist, Witches, New, etc.

FOOTBALLS AND BOXING GLOVES.

A fine line of footballs has been received by Nerlich & Co., the best quality being a feature. Also a line of boxing gloves, which is a new thing this season. The dealer may get a price list on application.

NEW ERASER.

An ink eraser, which bids fair to take the place of the knife or of the india rubber charged with pumice stone, is the invention of a Swiss gentleman.



No. 68.—Nerlich & Co.

The same is constructed after the principle of the cradle hand-blotters. The rocking portion is, however, much smaller,

RETURNED

The Brown Bros., Limited.

RETURNED

4 Cuts

Nov 30/97