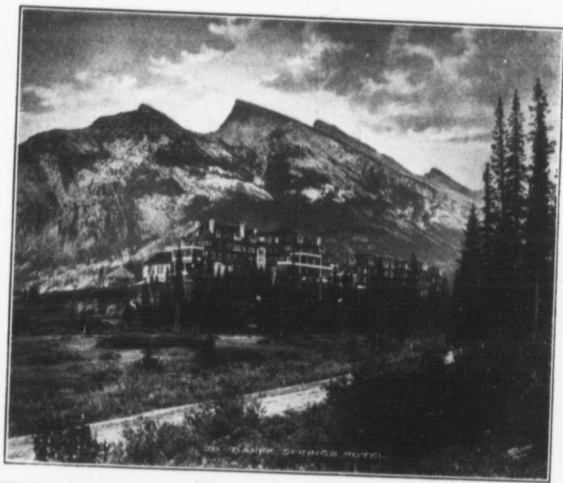


thousand square miles. Banff, situated about twenty miles west of The Gap, the beginning of the mountain region, is the first point of special interest on the westward trip. Near Banff are many points of attraction for the tourists, chief among them being the hot sulphur springs which have made the place famous as a health resort. People flock to these springs from all parts of the continent to leave their coughs,

and Field, a distance of only eight miles, the track drops nearly one thousand feet. At some points the grade is between five and a half and six per cent. What this means in rail roading is best indicated by the power required to haul a train up the hill. On our return trip we had only eight cars. At Field the train was broken up, and a large six-wheeler engine was put on in front, then followed four cars. Be



BANFF SPRINGS HOTEL WITH MOUNT RUNDEL IN THE BACKGROUND.

rheumatism and other ailments, and incidentally their cash.

Continuing westward from Banff, the train steadily ascends the gradual slope until the summit of the Rockies is reached, when the descent on the westward side is started with an abruptness that is almost startling. From the summit to Field, the first station on the western slope, is what is known as "The Big Hill," the heaviest grade on the mountain section. Between Hector

hind these and attached to them were placed two enormous eight-wheelers, and another eight-wheeler brought up the rear. With these four enormous engines, puffing and snorting in the exertion of their utmost strength, the eight cars were gradually brought up the hill, but during a considerable portion of the journey progress was so slow that the passengers could have gotten off and walked with no danger of losing ground.