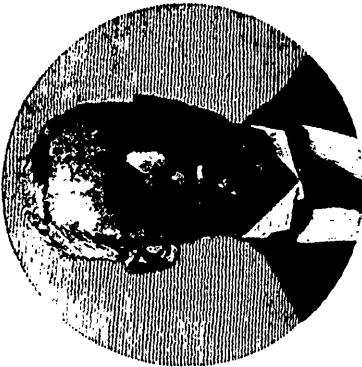




Geo. E. HANNA, L.D.S., KEMPTVILLE  
ELECTORAL DISTRICT NO. 1



J. A. MARSHALL, L.D.S., D.D.S., BELLEVILLE  
ELECTORAL DISTRICT NO. 2



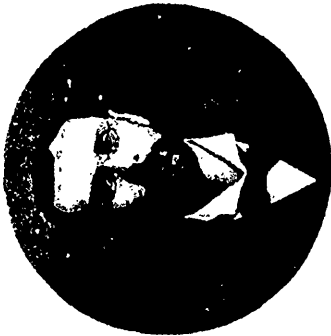
H. T. WOOD, M.D.S., TORONTO  
ELECTORAL DISTRICT NO. 3



R. J. HUSBAND, L.D.S., D.D.S., HAMILTON  
ELECTORAL DISTRICT NO. 4



A. M. CLARK, L.D.S., D.D.S., WOODSTOCK  
ELECTORAL DISTRICT NO. 5



W. A. BROWNLEE, M.D.S., D.D.S., MOUNT FOREST  
ELECTORAL DISTRICT NO. 6



H. R. ABBOTT, L.D.S., LONDON  
ELECTORAL DISTRICT NO. 7



J. B. WILLMOTT, D.D.S., M.D.S., TORONTO  
REPRESENTATIVE FROM THE FACULTY

ROYAL COLLEGE OF DENTAL SURGEONS OF ONTARIO—BOARD OF DIRECTORS  
INCORPORATED 1886