

Lime-Sulphur Solution



Arsenate of Lead

Grasselli Lime Sulphur Solution contains the maximum amount of Lime and Sulphur **actually in solution**. It is a clear solution and free from sediment. You will not be troubled with clogged nozzles when using it. It is uniform in strength and shipped in good barrels.

Grasselli Arsenate of Lead Paste contains 15% Arsenic Oxide. It mixes as easily as is consistent with the necessary adhesive qualities.

**Kills All Leaf-Eating Insects
Sticks to the Foliage**

**Mixes Easily with Water
Does Not Injure the Foliage**

Grasselli Spray Products are manufactured under rigid guarantee. Complete analysis on each package.

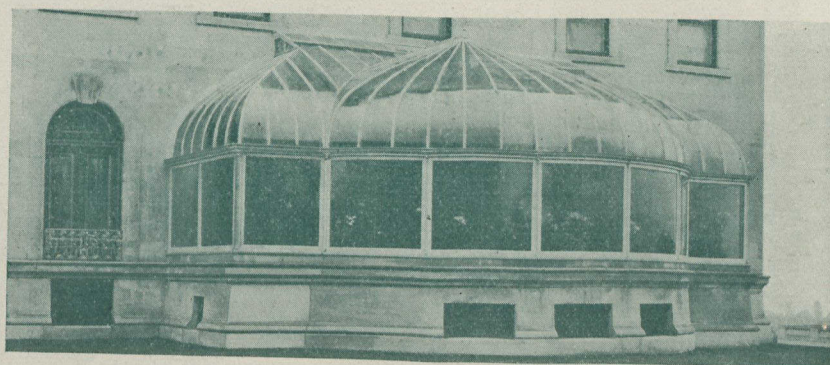
Distributors wanted in unoccupied territory

Send Inquiries to the Toronto Office

THE GRASSELLI CHEMICAL CO., LIMITED

**Head Office and Works:
HAMILTON, ONT.**

**Warehouse and Office:
131 Eastern Ave., TORONTO, ONT.**



ERECTED FOR M. B. DAVIS, MONTREAL, CANADA.

Take the Rigidity Question in U-Bar Greenhouses

You might think on first glance that a house or conservatory so airy and simple in construction could not be rigid and enduring. It is decidedly both! You see with the casing of the roof bar (or core bar as we call it) in the galvanized steel U-Bar, every bar is practically a rigid rafter, although the combining of both gives a member no larger than the smallest bar used in other constructions.

The core bars are chemically preserved against decay, and protected against condensation by the steel U-Bar.

The steel U-Bar is galvanized against rust and then coated with an aluminum paint. It is an ideal construction for private estates, parks and public institutions.

U-BAR GREENHOUSES

PIERSON U-BAR CO

ONE MADISON AVE., NEW YORK

CANADIAN OFFICE, 10 PHILLIPS PLACE, MONTREAL