

transmission of power, the salient features of which are claimed to be safety, no bolts, no keys, never slips.

A new exhibitor this year was the Georgian Bay Engineering Works, of Midland, Ont. Their display was confined to a 4 h. p. gasoline engine, of simple construction but fully guaranteed. They manufacture stationary, portable and marine gasoline engines for all purposes, automatic towing machines, mine hoists and contractors' plant, and intend this winter to take up the manufacture of steel launches.

Another new exhibitor was the Smart-Turner Machine Company, of Hamilton, who showed steam pumps and gasoline engines from 1½

and asbestos pipe covering, Magnesia flexible cement roofing, asbestos sheeting, etc.

#### BUREAU OF FORESTRY CLASSIFICATION.

On July first the Bureau of Forestry put into effect a new classification or grading of government employees in the Department of Forestry, Washington. The following shows the grades and salaries:

Forester, \$3,500.

Associate Forester, \$2,700-\$3,000.—Chief of the ranking division and assistant to the forester.

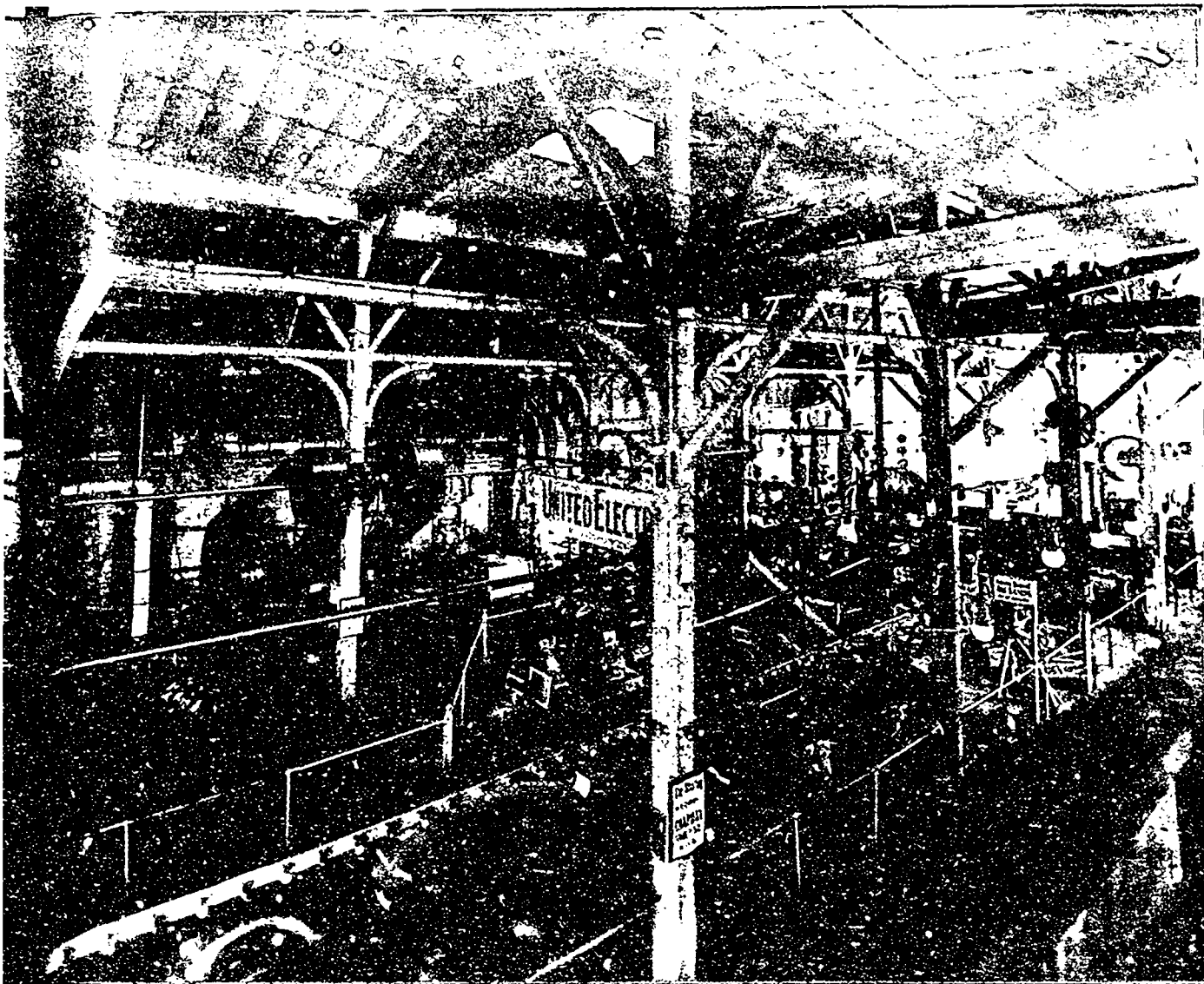
Assistant forester, \$2,100-\$2,600.—Chiefs of divisions and men occupying positions of similar responsibility.

whose training in forestry is incomplete.

It will be seen from above that this field is an attractive one for young men.

#### NEW SAW FACTORY.

The new saw factory of the A.J. Burton Saw Company at Vancouver, B. C., has been completed and was thrown open for inspection on Friday, September 16th. The factory is a large two-story frame building, situated at corner Powell street and McLean drive, and is fitted up with modern machinery. The company import the saw steel in circular plates, and which has previously been rolled in the mills to the desired gauge, from Sheffield, Eng. They claim that the eastern saws are too soft



ADDITIONAL EXHIBITION, TORONTO, AUGUST 28 TO SEPTEMBER 10, 1904.

horse power upwards, also the Rodgers shaking grate, which is claimed to be a great fuel saver and to accomplish splendid results with slack coal.

The Eureka Mineral Wool Company, of Toronto, utilized a considerable portion of their space to demonstrate the advantages of "Cling Surface" belt dressing, of which they are making a specialty. When treated with this dressing the friction of a belt is greatly reduced and the incidental expenses decreased. Mineral wool pipe covering, Daniels' perfect pistol packing, Florian fireproof deadening felt and Paroid roofing were among the other articles exhibited by this company.

The Philip Carey Manufacturing Company, 100 Front street east, Toronto, showed stand-

Forest Inspector, \$1,800-\$2,000.—Chiefs of the ranking sections of divisions and men in charge of independent lines of work of similar importance.

Assistant Forest Inspector, \$1,500-\$1,700.—Chiefs of sections of divisions, except of the ranking section, and men occupying positions of similar responsibility.

Forest Assistant, \$900-\$1,400.—Men who enter the Bureau through the examination for forest assistant and have not yet been given charge of independent lines of work.

Forest Agent, \$700-\$900.—Men without civil service standing, in charge of subordinate lines of work.

Forest Student, \$300.—Men whose service is temporary and educational in character and

for the British Columbia trade, and it is the intention to supply an article which will meet the local requirements in every respect. The officers of the company are: President, Mr. Robert Jardine; vice-president, Dr. E. Sawyer; manager, Mr. A.J. Burton, secretary-treasurer, Mr. H. Wilkinson.

#### IMPORTANT FORESTRY WORK.

Prof. Zavitz, who is in charge of forestry work at the Guelph Agricultural College, intends to take energetic action in the direction of farm forestry. He has recently completed a tour of Ontario with the object of finding out what are the farm forestry conditions, the needs and capabilities of the different sections. He found the Lake Simcoe and Georgian Bay districts well adapted for experiments in farm forestry. He proposes to set out at once on a seed collecting expedition, a heavy crop of white pine seed being promised this year.