



McEachren's PROGRESSIVE LUMBER DRY KILN

Our Heaters and Fans are Economical with Steam and Power, are Safe as a Fire Risk. Plans and specifications furnished with each apparatus.

Write for Prices and Particulars to

McEACHREN HEATING & VENTILATING CO. GALT, ONT.

THE ROYAL ELECTRIC COMPANY

MONTREAL, QUE. Western Office: TORONTO, ONT.
Cable and Telegraph Address, "Boylelectric."

MANUFACTURERS OF

Electrical Machinery and Apparatus

... FOR ...

LIGHT and POWER

SPECIAL ATTENTION GIVEN TO—

LONG DISTANCE TRANSMISSION OF ELECTRICITY
FOR LIGHT AND POWER

ALSO FOR

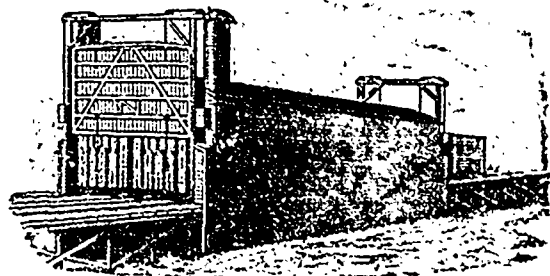
ELECTRIC PLANTS FOR MILLS

Distant water powers utilized and Mills lighted and operated safely.
CORRESPONDENCE SOLICITED.

IT COSTS A CENT

To ask for our New Catalog. It tells how the "STANDARD" is built, and why it is the Kiln you should buy. Your name on a postal gets it.

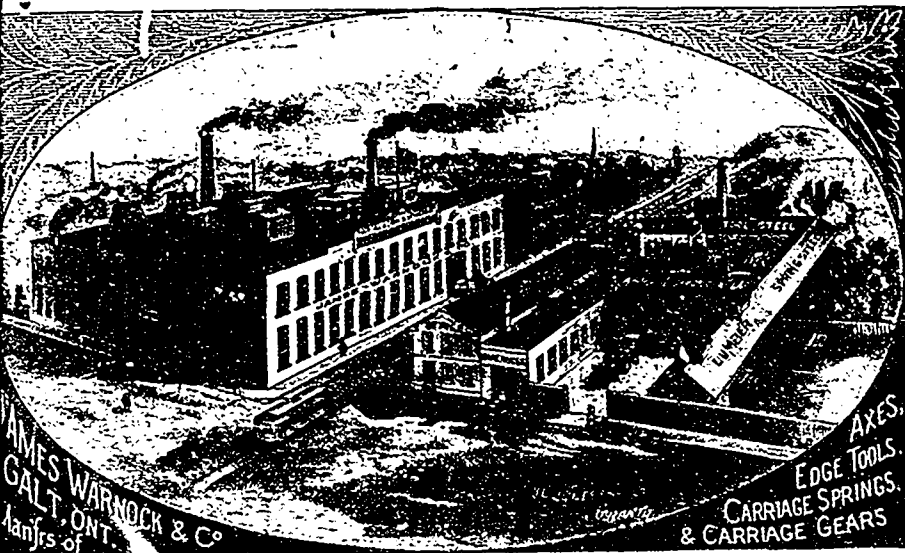
THE STANDARD DRY KILN



Best at any price—but costs no more than others. It dries every kind of forest products, and does it right. Is that the kind of a Kiln you want?



THE STANDARD DRY KILN CO. INDIANAPOLIS, IND.



JAMES WARNOCK & CO.
GALT, ONT.
Manufacturers of

AXES,
EDGE TOOLS,
CARRIAGE SPRINGS,
& CARRIAGE GEARS

OUR Cant-Hooks and Peavies

Are unequalled by anything on the Market.

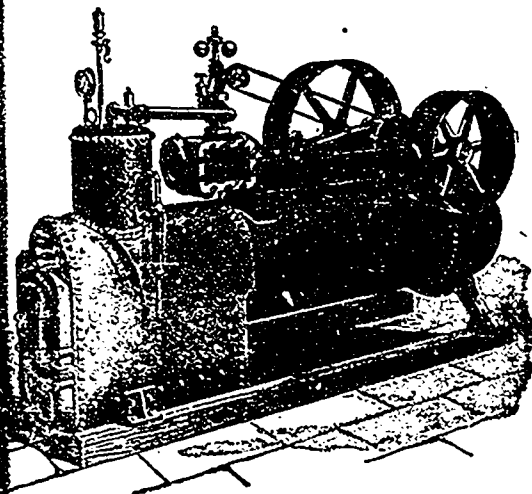
EVERY ARTICLE FULLY GUARANTEED.

JAS. WARNOCK & CO. GALT, ONT.

PORTABLE ENGINE

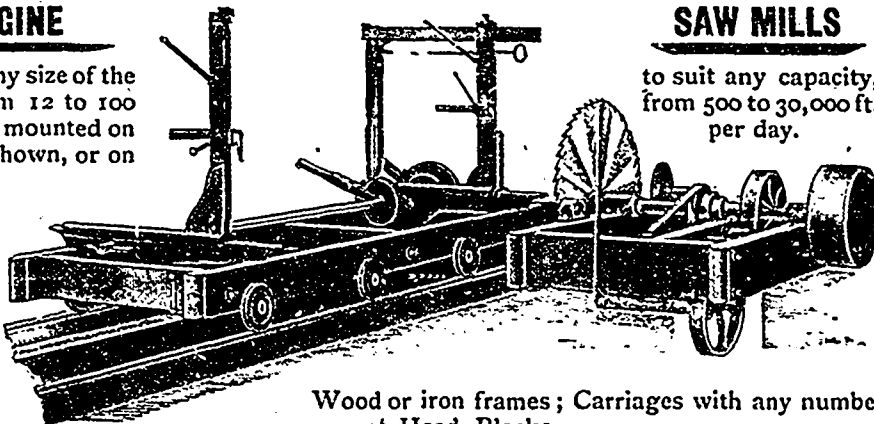
We can furnish you any size of the above style Engine from 12 to 100 H.P., either on Skids or mounted on wheels with Engine as shown, or on separate Frame.

Also Engines, Boilers, Double Edgers, Trimmers, Top Saw Rigs, Log Jacks, Niggers, Shafting, Pulleys, Gears, Saws, etc. We can save you money. Let us quote you prices. Catalogues free.



SAW MILLS

to suit any capacity, from 500 to 30,000 ft. per day.



Wood or iron frames; Carriages with any number of Head Blocks.

ROBT. BELL, JR., Box 35, HENSALL, ONT.