



COLONIAL HOUSE AT HAMILTON

This house is in the style of the Dutch Colonial, erected by the early Dutch settlers in the New England States, designed by F. W. Warren, Architect. The bricks of a pleasant red, are impervious wire-cut laid up in beach sand mortar.

Interesting designs of brick and white stucco form attractive panels around the front windows and in the chimneys. The foundation is stone plastered and floated with cement mortar while the roof is laid diagonally of grey asbestos slate, from which protrude in front three unique dormer windows.

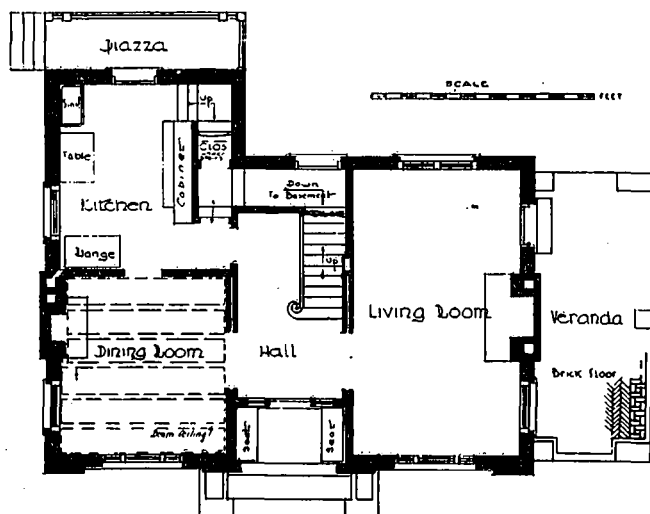
The interior, also Colonial, presents a very cheerful appearance. The hall is finished in white enamel with mahogany doors, and an ar-

tistic touch is added by the stained glass window on the stair landing.

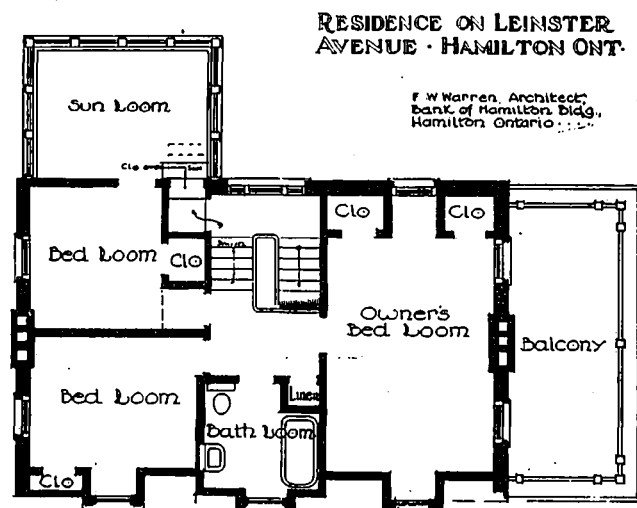
The living room and dining room are finished in stained red oak. The living room which extends across one side of the house is made exceedingly cheerful by its open tile fire-place. The door of this room opens on a large brick floored verandah which is also repeated on the second story.

The dining room also adds an interesting note with its panelled walls and beamed ceiling and also has a fire-place.

The porch in front is entirely in keeping with its two white seats, while the quaint brass knocker and side-lights in which are inserted in leaded glass the owner's coat of arms and motto, add the completing touch to the harmonious ensemble.



FIRST FLOOR PLAN, LEINSTER AVENUE RESIDENCE, HAMILTON.



SECOND FLOOR PLAN, LEINSTER AVENUE RESIDENCE, HAMILTON.

RESIDENCE ON LEINSTER AVENUE - HAMILTON ONT.

F. W. Warren, Architect,
Bank of Hamilton Bldg.,
Hamilton Ontario.