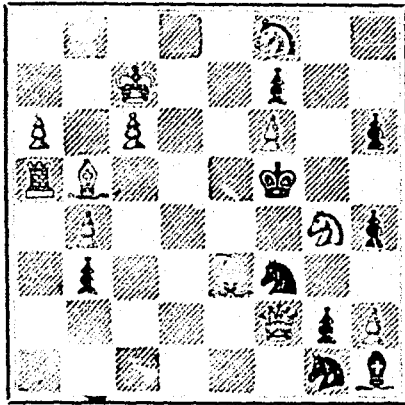


A game of chess by telegraph between the chess clubs of Liverpool and Calcutta has been arranged, and is to come off during the summer.

The well-known problem composer, F. Healey, remarks in the preface to his collection of problems: "It has been justly observed by a clever Spanish writer that there is as much difference between the styles of two skillful problem composers as between the paintings of Raphael and Titian."

PROBLEM No. 225. By James Pierce, M.A. BLACK.



White to play and mate in three moves.

GAME 360TH.

(From the Hartford Times.)

MORPHY'S LAST GAME.

A beautiful "Evans' Gambit" that was played Nov. 11, 1856, at New Orleans. (Remove White's Queen's Knight.)

- WHITE (Morphy.) 1. P to K 4, 2. Kt to K B 3, 3. B to B 4, 4. P to Q Kt 4, 5. P to Q B 3, 6. Castles, 7. P to Q 4, 8. P takes P, 9. P to Q 5, 10. P to K 5, 11. Q to R 4 (ch), 12. Q takes Kt, 13. R to K sq, 14. B to K Kt 5, 15. P to K 6, 16. P takes P (ch), 17. Q to B 4 (ch), 18. Q to K R 4, 19. Q takes R P, 20. B takes Kt (ch), 21. Kt to Kt 5 (P), 22. K to R sq, 23. R takes R, 24. Q to R 7 (ch), 25. Q takes P (ch), 26. Kt to K 6 (ch), 27. P takes Q, 28. Q to B 8 (ch), 29. Q takes R and wins.

(a) The leading authorities say it makes no difference whether the Bishop be played to this square or Rook's 4th, but when the Queen's Knight is given, the latter move is unquestionably preferable.

(b) I have no hesitation in recommending Kt to K B 3 here.

(c) This certainly cannot be Black's best move. P to K R 3 was the safest and best play.

(d) Again P to K R 3 would have been better.

(e) Another inferior move. P to K R 3 would have given Black a safe position.

(f) An old-time Morphy attack, sacrificing both Rooks, but winning the game.

(g) Nothing else is left for him to do.

(h) If instead of this Black play 27. P to Q B 3, the following variation would have ensued:

- 27. P takes Q, 28. Q to B 2 (ch), 29. Q to Q 7 (ch), 30. Q to K 8 (ch), 31. P to Q 7, wins.

GAME 361ST.

Played in London some time ago between Herr Harwitz and Mr. H. F. Gastmann, when the former gave the odds of Queen's Rook.

(French game. Remove White's Q R from the board.)

- WHITE (Herr Harwitz.) 1. P to K 4, 2. P to K B 4, 3. P to Q 4, 4. P to K 5, 5. Kt to K B 3, 6. B to Q 3, 7. B to K 2, 8. P to Q B 3, 9. Castles, 10. P to K R 3, 11. P takes P, 12. Kt to R 2, 13. B to Q 4, 14. B to Kt 6 (ch), 15. P to B 5, 16. Kt takes P, 17. P takes P (ch), 18. Q takes P (ch).

NOTES. (a) The advance of these Pawns is injudicious. (b) Mate is forced in two more moves. SOLUTIONS. Solution of Problem No. 225. WHITE. 1. R to Q sq, 2. Mate acc.

The Scientific Canadian MECHANICS' MAGAZINE, AND PATENT OFFICE RECORD, A MONTHLY JOURNAL. Devoted to the advancement and diffusion of Practical Science, and the Education of Mechanics.

TERMS: One copy, one year, including postage, \$2.00. One copy, six months, including postage, \$1.10. Subscriptions to be paid in ADVANCE.

IMPORTANT NOTICE. THE Burland-Desbarats Lithographic Co. 5 & 7 BLEURY ST., Began to form the BANKERS, MERCHANTS and BUSINESS MEN of the Dominion, but their large establishment is now in full operation, and that they are prepared to do all kinds of ENGRAVING, ELECTRO-TYPING, STEREOTYPING, LITHOGRAPHING and TYPE-PRINTING.

Province of Quebec. PARLIAMENT HOUSE. PRIVATE BILLS. PARTIES intending to make application to the Legislature of the Province of Quebec, for Private or Local Bills, either for granting exclusive privileges, or conferring corporate powers for commercial or other purposes of profit, for regulating surveys or boundaries, or for doing anything tending to affect the rights or property of other parties, are hereby notified that they are required by the Rules of the Legislative Council and Legislative Assembly respectively (which are published in full in the Quebec Official Gazette), to give ONE MONTH'S NOTICE of the application (clearly and distinctly specifying its nature and object), in the Quebec Official Gazette, in the French and English languages, and also in a French and English newspaper published in the district affected, and to comply with the requirements therein mentioned.

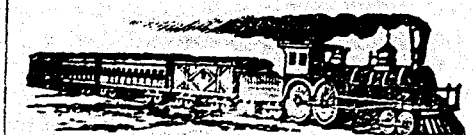
THE BURLAND-DESBARATS LITH. CO. OFFICES OF PUBLICATION: 5 and 7 Bleury Street, Montreal. G. B. BURLAND, General Manager. F. N. BOXER, ARCHITECT & CIVIL ENGINEER, Editor.

GRAY'S SPECIFIC MEDICINE. The Great English Remedy, will promptly and radically cure any and every case of Nervous Debility and Weakness, result of Indiscretion, excess or overwork of the brain and nervous system; is perfectly safe, and has been extensively used for over thirty years with great success.

THE GRAY MEDICINE CO., WINDSOR, ONT. Sold in Montreal by all Wholesale and Retail Druggists, and everywhere in Canada and United States.

THE COOK'S FRIEND BAKING POWDER. Has become a HOUSEHOLD WORD in the land, and is HOUSEHOLD NECESSITY in every family where Economy and Health are studied.

MOTHERS DURHAM KNOW CORN FLOUR, FOR INFANTS and NURSES INVALIDS. KNOW IS THE BEST.



GOVERNMENT RAILWAY. Western Division. SHORTEST AND MOST DIRECT ROUTE TO OTTAWA.

On and after MONDAY, APRIL 14th. Trains will leave HOCHELAGA DEPOT as follows: Express Trains for Hull at 9.30 and 5.00 p.m. Arrive at Hull at 2.30 p.m. and 10.00 p.m.

British American BANK NOTE COMPANY, MONTREAL. Incorporated by Letters Patent. Capital \$100,000. General Engravers & Printers.

Bank Notes, Bonds, Postage, Bill & Law Stamps, Revenue Stamps, Bills of Exchange, DRAFTS, DEPOSIT RECEIPTS, Promissory Notes, &c., &c., Executed in the Best Style of Steel Plate Engraving.

JUST PUBLISHED CHISHOLM'S ALL-ROUND ROUTE AND PANORAMIC GUIDE OF THE ST. LAWRENCE. With corrections to date. It contains full descriptions of the points of interest on the "All Round Route," including Hudson River, Trenton and Niagara Falls, Toronto, Ottawa, Montreal, Quebec, Saguenay River, White Mountains, Portland, Boston, New York.

CHEAPEST AND BEST. DAILY WITNESS, MONTREAL WITNESS, WEEKLY WITNESS, CANADIAN MESSENGER, NEW DOMINION, MONTHLY WITNESS. JOHN DOUGALL & SON, 218 and 220, St. James Street, Montreal.