

DRAUGHTS-CHECKERS

All Checker communications should be addressed to W. Forsyth, 36 Grafton Street, Halifax.

TO CORRESPONDENTS.

"DIXIE," Antigonish.—Your last went to the Dead Letter Office, Ottawa, but fortunately reached me in time. Ask your postmaster to look into the law, when he will discover that I can't fully prepay postage on printers' manuscript, and request him to be guided by the postal regulations hereafter. The delay that might be caused by his ignorance of his duties and of the regulations, may at another season of the year cause serious inconvenience.

Please note that at the 6th move in your solution to Problem 56, if 10 15 be played instead of 10 14, black wins. This renders your solution useless.

SOLUTIONS.

PROBLEM 55.—Solved by Mrs. Mosley and "Dixie." Position:—black men, 2, 5, 8, 13, 19, 20, kg. 22; white men, 10, 14, 15, 18, 24, 27, 28, 32; white to play and win. 10 7 14 9 27 18 32 7 2-11 5-23 20-27 w. wins.

PROBLEM 56.—Solved by Mrs. Mosley. Position:—black men, 1, 5, 6, 8, 10; white men, 13, 18, 20, 28, 31; white to play and draw. 28 24 16 7 7 2 19 15 8-11 22-26 27-32 27-23 (1) 27 24 20 2 9 15 10 (1) 10-15 26-31 5-14 23-18 20 16 27 24 24 19 13 9 15-22 31-27 32-27 drawn.

VAR. I.

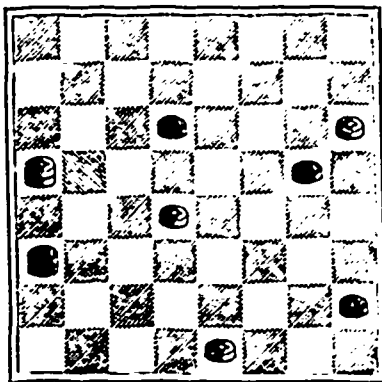
5-9 24 19 22-26 16 7 27 23 (2) 15-22 19 16 drawn. 10-15 23 18 26-31

VAR. II.

15-24 24-28 28-32 23 19 19 16 16 7 drawn.

PROBLEM 59.

From the Glasgow Herald. Black men—10, 16, 28, kg. 21.



White men—12, 18, 31, kg. 13. Black to play and draw.

GAME XV, "Alma."

11-15 12-19 10-19 27-23 23 19 23 7 27 24 3 7 8-11 2-11 20-27 14-18 22 17 17 13 32 16 7 11 3-8 8-12 18-23 23-19 25 22 26 23 28 24 21 17 11-16 4-8 8-12 19-15 26 23 23 19 16 11 11 7 7-11 15-18 23-27 \*18-23 31 26 22 15 11 7 9-14 11-18 27-31 29 25 19 16 7 3 16-20 12-19 31-27 19 16 24 15 24 20

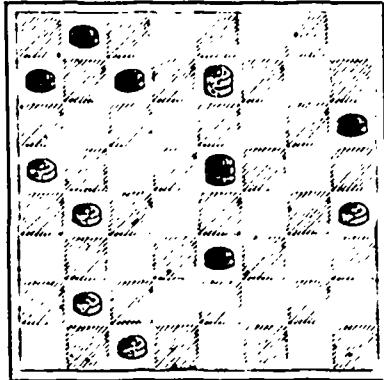
\* From this position the book

shows a black win, but an old veteran, after examination, points out a very pretty draw, which we ask our checkerists to discover by presenting them with

PROBLEM 60.

By James Toner, Now Castle, being a correction of Baker and Reed's "Alma," variation 103—from Leeds Express.

Black men—1, 5, 6, 12, 23, kg. 15.



White men—13, 17, 20, 25, 30, kg. 7. White to move and draw.

The proprietors of THE CRITIC offer two prizes—to consist of books on Checkers—to those subscribers who shall send in the greatest number of correct solutions during the current year. No entrance fee required.

CHESS.

All communications for this department should be addressed—CHESS EDITOR, Windsor, N. S.

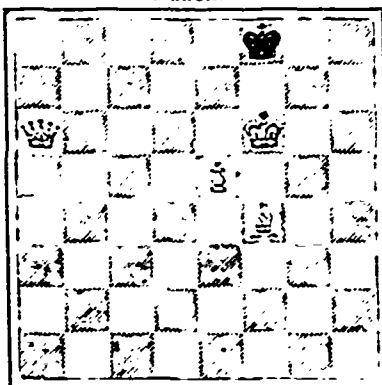
TO CORRESPONDENTS.

Our regular Solution Tourney will recommence on Oct. 5th. The prizes will be awarded to the successful competitors (subscribers only being eligible) at the end of December. The first prize will be "Gossip's Chess Manual," new edition, revised by Lipschütz, and the second prize will be "Pierce Gambit, Papers and Problems."

Solution to "Chess Monument."

WHITE. BLACK. 1 R to QKt5(ch) K to Q2 2 R to K7(ch) K takes Kt 3 B to Kt5(ch) K takes Kt 4 B to B4(ch) K to B3 5 B to Q5(ch) K takes B 6 Q to KB3(ch) K to B5 7 P mates

Problem from "Chess Euclid." BLACK.



WHITE. Blackburne. White to mate with P in 3 moves.

GAME No. 27.

King's Gambit Declined. WHITE. BLACK. Gunsberg. Blackburne. 1 P to K4 P to K4 2 P to KB4 B to B4 3 Kt to QB3 P to Q3 4 Kt to B3 Kt to KB3 5 B to B4 Kt to B3

6 P to Q3 P to QR3(a) 7 P to B5 Kt to QR4 8 P to QR3(b) Kt takes B 9 P takes Kt Q to K2 10 B to Kt5 P to QR3 11 R to KBsq(c) P to QKt4 12 P takes P RP takes P 13 P to QKt4(d) B to Kt3 14 Q to Q3 Castles(c) 15 P to KKt4 B to Qsq 16 KR to Ktsq Q to B2 17 B takes Kt P takes B(f) 18 Q to Q2 K to Rsq 19 Q to R6 KR to Ktsq 20 R to Kt3 Q to K2(hour) 21 R to R3 R to Kt2 22 Kt to K2(g) P to Q4(h) 23 Kt to Kt3 R takes RP 24 R takes R Q takes P(ch) 25 K to K2(i) Q takes R 26 Kt to R5 Q to Bsq 27 Kt takes R(j) Q takes Kt 28 Q takes Q K takes Q 29 P takes P P takes P 30 Kt to Q2 P to Kt5 31 R to QKt3 B to R3(ch) 32 K to B3 B to K2 33 R to Ktsq B to B5(k) 34 Kt takes B P takes Kt 35 P to B3(l) P takes P 36 R to QBsq B to Kt5 37 P to R4(m) P to R4 38 P to Kt5 B to K2 39 R takes P P takes P 40 P takes P B takes P 41 R takes P B to B5 42 R to B7 K to B3 43 R to Kt7 K takes P(n) Drawn Game.

NOTES BY MESSRS. BLACKBURNE AND GUNSBURG.

(a) This is done to prevent the exchange of B for Kt, also threatening B to KKt5. (b) The object of this move, which we imagine comes too late, is to prevent B to Kt 5 after Kt takes B. (c) To provide against P to K Kt 3. (d) Necessary to prevent the break up of the position by P to Kt 5. (e) Premature; B to Q 2, because of his subsequent troubles, would have been better. (f) P takes P is a blunder which ought to have lost the game. B takes B is much superior. (g) With the object of reaching Rook's fifth. (h) Black evidently calculated on sacrificing Queen's Rook, but as will be afterwards seen this desperate remedy should be of no avail against best play. If Black had continued Q to B sq the game might most probably have proceeded:—23 Kt to Kt 3; Q to Kt sq; 24, P to Kt 2, P takes P; 25, Kt to R 5, P to Kt 5; 26, R to Kt 3, &c. (i) White here misses the opportunity of winning. Kt to Q 2 was the winning move, for Black could not play Q takes R on account of White replying Q takes R (ch), followed by Kt to R 5 (ch), regaining Q with R afterwards. (j) Although from the appearance of the position it would seem at first glance that White could have done better, yet on closer examination it will be found that any other line of play would not have been so favorable for White. If, for example, White played 27, P to Kt 5, P takes K P, and White cannot play 28, P takes B P, because of R to Kt 7 (ch). (k) P to K R 4 would have been much stronger. (l) This move ensured the draw. (m) White's object, having sacrificed the pawn, is to gain both pawns

on Q B file by playing his king, but he has to seek to provide against P to R first.

(n) White now takes pawn, and he can also afford to sacrifice the other pawn for Rook, knowing that Rook's pawn never could Queen, owing to Black's bishop being of different color to the square on which R P would have taken Queen.

MANUFACTURERS

Will do well to send their Orders to JAMES BOWES & SONS, 125 Hollis St., Halifax, (In close proximity to Queen and Halifax Hotels) for

JOB PRINTING

Of all descriptions.

LETTER, NOTE & BILL HEADS, AND BUSINESS CARDS, &c.

Catalogues, Illustrated or otherwise, PRINTED in a superior manner. Also, STOCK CERTIFICATES.

Halifax Steam Coffee and Spice Mills. Established A. D. 1841.

W. H. SCHWARTZ & SONS, Wholesale Dealers in

Finest Coffees & Spices.

204 UPPER WATER ST. HALIFAX.

W. E. SCHWARTZ. FRED. SCHWARTZ.

J. S. MACLEAN & CO. WHOLESALE GROCERS,

Dealers in West India Goods, Provisions, &c.

JERUSALEM WAREHOUSE, - HALIFAX.

Have on hand a large stock of

MOLASSES, Demerara, Porto Rico, St. Croix, Trinidad, Antigua.

SUGAR.

Porto Rico, and all Grades Refined.

TEA. TEA.

A large and specially selected stock of China Teas and of their well known No. 1 Blend. This latter is mixed India & China Teas of a high grade and is daily increasing in sale as a Family Tea. It is always of uniform strength and flavor and therefore most desirable.

FLOUR. CORN MEAL. BEANS. BARLEY. PEAS. RAISINS. CURRANTS. TOBACCO. PORK. BEEF. BUCKETS. BROOMS. PICKLES. SPICES.

Besides other small Groceries which are offered at reasonable prices on usual terms.

LONDON DRUG STORE,

147 Hollis Street,

J. GODFREY SMITH,

DISPENSING CHEMIST, Proprietor. Agent for

Lawrence's Axis-Cut Pebble Spectacles and Eye Glasses.

In Stock, the great cure of Neuralgia "Eau Anti Neuralgique." Chronic cases yield to its curative effects. Also, in Stock, a line of FANCY GOODS, Drawing Cases, Toilet Sets, in Plush, Leather, &c.

Printed by Halifax Printing Co. 161 Hollis Street, Halifax, N. S.