

**THE**  
**North American Life**

**Solid as the Continent.**

A remunerative agency contract can be secured with this Company under which an immediate return is obtained for work well done and a renewal income for the future. Competent men desiring a lucrative business connection should address,

**T. G. McCONKEY,**  
Superintendent of Agencies

HOME OFFICE, TORONTO, ONT.

**THE**  
**Ward Commercial Agency**

Mercantile Reports, Collections.  
Personal Attention, Prompt Returns.  
146 St. James Street, MONTREAL.  
Attention Given to Special Reporting.

**TYRES! TYRES!!**

1904 list of Tyres and Accessories now ready on application. **Special Offer of Beaded Edged Covers**, for replacements.

1st quality 5/6, 2nd quality 4/6 each.  
3rd quality 3/9 each.



Wired-on Covers, licensed by Dunlop Tyre Co., 7/- each. *Special Quotations for Quantities.*

**JOHN B. PARKES & CO.,**  
Bradford St., BIRMINGHAM, Eng.

**Individual Evening Instruction**

ON  
MONDAY, WEDNESDAY AND FRIDAY EVENINGS  
AT



Renouf Building, Cor. St. Catherine and University Streets.

Book-keeping, Arithmetic, Penmanship, Shorthand, Type-writing, Correspondence, English, French, Civil Service, etc. Students select their subjects and are taught separately by nine expert teachers. Write, call or telephone Up 151 for Prospectus and new price list. Address:

**J. D. DAVIS,**  
Renouf Building, Cor. St. Catherine and University Sts., MONTREAL.

**FLYNN BRO'S & CO.**

MANUFACTURERS OF



**WROUGHT IRON and  
COPPER GOODS...**  
Art Metal Workers,

PAUL PRY WORKS,  
NEW SUMMER STREET,  
Birmingham, - Eng.

**OFFORD &  
WILSON,**  
Manufacturing  
Electrical Engineers

98 Woodcock St. BIRMINGHAM, Eng.



**Theatre  
Lighting  
Accessories**

Complete Light Box set, with Lamp, Crutch, Condenser, and Mediums.

**WALTER MIDDLETON**  
ENGLAND

STEEL NAME & LETTER PUNCHES.  
BRASS TOOLS FOR GILDING  
ON LEATHER & SATIN  
CYCLE PLATES  
BRANDS  
STAMPER & PIERCER  
DIE SINKER TOOL MAKER  
CHECKS & LABELS  
METALLIC CLUB BADGES  
JEWELLERS PUNCHES  
WIRE ARTS PUNCHES  
DOOR PLATES  
&c

**104, VYSE ST., BIRMINGHAM**  
ENGLAND

**The Federal**

HEAD OFFICE  
Capital and Assets  
Assurance written in  
Paid Policyholders  
Most

H. RUSSELL POPHAM,

**Get  
Best**

Do  
pol  
all  
ves

The Manufact  
Head

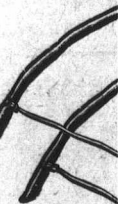
**WALT**

PEARL BUTTON  
MANUFACTURER



BIRMINGHAM

MUDGUARDS,  
RIMS  
and GEN



The Wasde

158 Hockley H