



Portland Cement

MONARCH BRAND

Highest quality—guaranteed to fulfill the requirements of specifications for Portland Cement approved of by the Canadian and American Societies of Civil Engineers.

Prompt shipments from mill or stock at Fort William and Port Arthur.

—The—

Lakefield Portland Cement Co., Limited
LAKEFIELD, ONT.

STEEL AND WOOD TANKS

STEEL SUPERSTRUCTURES

We are installing Tanks and Towers all over Canada for

**Sprinkler Systems, Municipal
Water Supply Plants, Fire
Pressure, &c.**

**Steel Flagstuffs, Bell
Towers, Hose Towers,
&c., &c.**

— POWER FURNISHED —
**WINDMILL, GASOLINE
ENGINE OR HYDRAULIC
RAM**



ONTARIO WIND ENGINE & PUMP CO., Limited
TORONTO



"Lehigh" Portland Cement

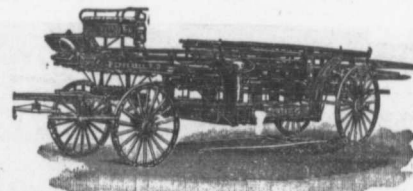
Capacity 20,000 Barrels per Day

The "Lehigh Portland Cement Company, Limited," are now also building a plant at Belleville, Ont., of 750,000 barrels annual capacity. Until this plant is completed all orders can be shipped from the United States. For prices, etc., address—

Thorn Cement Company

Buffalo, N. Y.

SOLE AGENTS FOR CANADA



Lightness, Strength and Economy

Seagrave Patent Trussed Ladders, Trussed Aerial, City Service and Village Hook and Ladder Trucks, Combination Hook and Ladder Trucks and Chemical Engines, Trussed Trucks, and Hand Pumps, Combination Hose Wagons and Chemical Engines, Hose Wagons, Combination Hook and Ladder Trucks and Hose Wagons, Chemical Engines, Fire Extinguishers, Hose Reels, Patrol Wagons, Ambulances, Specialty Wagons, Patent Sleigh Runners, and other Modern Fire Fighting Tools.

Prompt attention given to all enquiries. All goods built to order.

W. E. SEAGRAVE - WALKERVILLE, ONT.

LONG DISTANCE PHONES 685 AND 684



PILE DRIVING

On land and water by
steam.
Pile Drivers or Drop
Hammers.

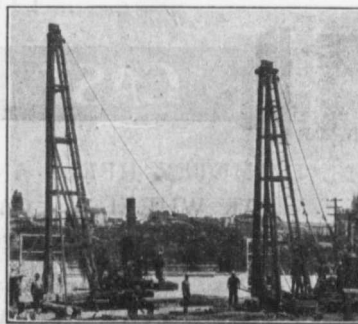
Dams, Wharves, Bridge Building, Trestle Work and General Contracting.

Submarine Diving and all kinds of Submarine Work.

We have always a stock of:—Diving Outfits, Portable Boilers, Hoisting and Pumping Machinery, etc.

WM. HOOD & SON, 10 RICHMOND SQ., MONTREAL

PILE DRIVING and Foundation Work



By 6-ton Auto
matic Steam
Pile Hammers,
Water Jet or
Drop Hammers,
Dock Building,
Submarine work
and Dredging

**Building
Mover
and
Wrecker**
GENERAL
CONTRACTING

**John E.
Russell**
Toronto

Residence, 1010 Queen St. E.—Phone M. 4626.
Office and Yard 307 Logan Ave.—Phone M. 2007.