

S I S O L U C R E B U T T E R  
 C I R C U I T B R E A K E R K  
 Y G P A T R I O T C H A Y E C  
 M E N V C U B A H L Y E N B O  
 B E U E R A A O O A P H I M L  
 A G A R E T M R O N E C T A R  
 L N H A T E A K K S R A U H A  
 O E C G T B K C I R T R M C W  
 R V E E E Y T I N R E T A R F  
 P A R A L L E L G I N U D A H  
 G T P U R K N A B A S E A T C  
 G I E S O O B A C F I L M S T  
 S O L I T A I R E N O E E O I  
 S F O L I A G F F U N G U S W  
 L E R T S N I M N I S I A R S

- M-  
 --head of the house (6) Há H&'  
 --a musician of mediaeval times (8)  
 --this occurred on the Bounty (6)
  - N-  
 --the beverage of the gods (6)
  - P-  
 --lines which are equidistant along all parts (8)  
 --one who loves his country (7)
  - R-  
 --a dried grape (6)
  - S-  
 --Eddie Wagner and Robert Albert star in this (6)  
 --a game you play by yourself (9)  
 --secret arbitrary court (11)  
 --German cabbage dish (10)
  - T-  
 --valuable wood (4)  
 --the windpipe (7)  
 --this appears to be a serious problem in Prince Edward Island (12)  
 --instrument used to determine rotational speed (10)  
 --deceive (5)
  - U-  
 --dishonest (6)
  - W-  
 --they received the right to vote in 1920 (5)  
 --a sorcerer (7)
- Quiz word clue [7]:** This bank came close to losing its assets
- Answer to last week's Dalorama:** GRAND ZENITH

# Dalorama

by Lloyd Daye and Michael Cormier

**RULES**

Find the word which best suits the clue. The word begins with the letter above the clue you are dealing with. The number after each clue gives the number of letters in the word. When you get the word, try to find it in the box of letters. Circle the letters in the word. After all words have been found the quiz word will remain.

- A-  
 --containing the mean value (7)  
 --to exact due penalty or reparation (6)
- B-  
 --made from whole milk (6)  
 --second letter of the Greek alphabet (4)  
 --one who fails in business (8)
- C-  
 --Scottish family (5)  
 --largest island in the West Indies (4)  
 --this car is always last (7)  
 --basin-like musical instrument (6)  
 --a device that automatically interrupts the flow of electric current (14)
- F-  
 --a cluster of leaves (7)  
 --a society based on brotherhood (10)  
 --a plant which must exist as saprophyte or parasite (6)  
 --a motion picture (4)
- G-  
 --specialized for gas exchange (5)
- H-  
 --two minute penalty for this (7)  
 --high blood pressure (12)
- L-  
 --Dal gives these grades (6)  
 --small-sized Irish brownie (10)

**DALHOUSIE CRYPTOQUOTE**

by H.M.K.

Here's how to work it: OXRUT OILZY  
 is  
 HENRY HICKS

One letter simply stands for another. In this sample O is used for the two H's, X for the E, Z for the K, etc. Single letters, apostrophes, the length and formation of the words are all hints. Each week the code letters are different.

Our readers are invited to submit quotes.

THIS WEEK:

H'B F QDB, SDCP FZX THBSIP, YDTL F QDB

- GFB QPGR

**THE CANADIAN MINERAL INDUSTRY EDUCATION FOUNDATION**

offers

**UNDERGRADUATE SCHOLARSHIPS**

in

**MINING, MINERAL or EXTRACTIVE and PROCESS METALLURGICAL ENGINEERING**

**\$1,500-9 months**

to students wishing to enter the first or subsequent professional year of a degree course in Mining, Mineral or Extractive and Process Metallurgical Engineering

For applications contact:

The Secretary,  
 Canadian Mineral Industry Education Foundation,  
 P.O. Box 45, Commerce Court West, Toronto, Ont.

or  
 The Dean of Engineering  
 Applied Science

**CLOSING DATE MARCH 4th, 1977**

**NAPOLI**

"Our Specialty is our Quality"



**FREE DELIVERY**

LASAGNA

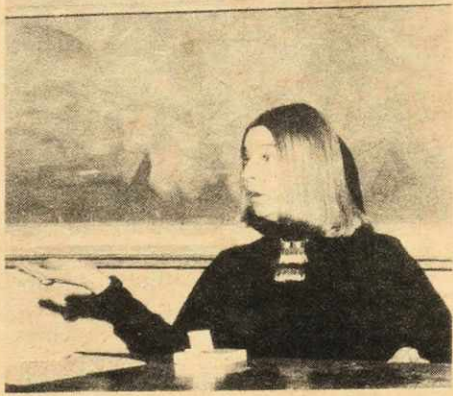
SPAGHETTI

**OPEN EVERY DAY EXCEPT MONDAY**

**425-5330-1-2-3**



**6430 QUINPOOL RD. HALIFAX**



Dal Photo/Creaser

Lorene Clarke will be speaking Friday, January 14 at 3:30 p.m. in room 4258 in the psychology wing of the Life Sciences Building.

**ADMIT ONE**

**The Toronto Consort**

Bawdy drinking songs & love ballads of the Renaissance.  
 Admission \$1.00  
 Senior Citizens free

**Sunday, January 16 3 p.m.**

Rebecca Cohn Auditorium  
 Dalhousie Arts Centre  
 Tickets & Information 424-2298



**ADMIT ONE**